


FUNDERMAX

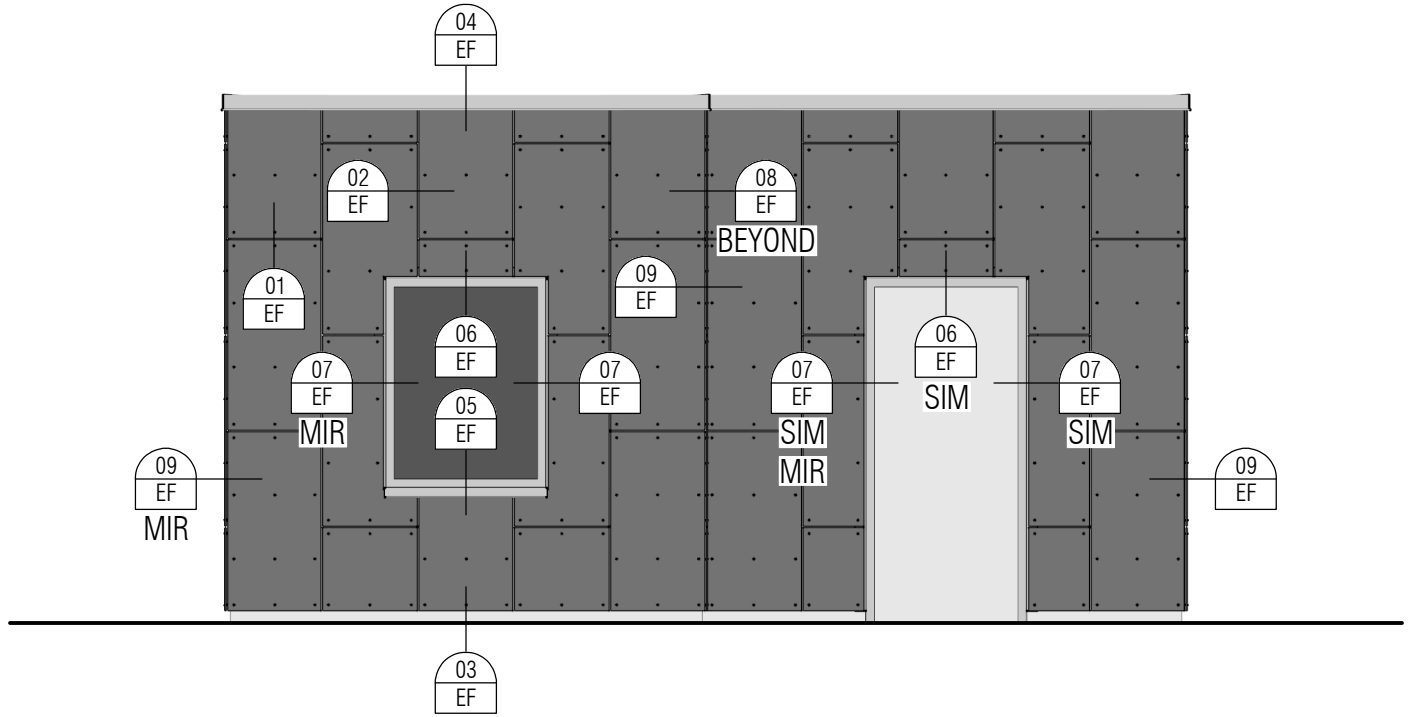
EXPOSED FASTENER STANDARD APPLICATION

DRAWING INDEX

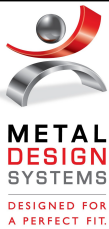
EF00	COVER SHEET
EFPA	DETAIL LAYOUT
EF01	HORIZONTAL JOINT DETAIL
EF02	VERTICAL JOINT DETAIL
EF03	GRADE TERMINATION DETAIL
EF04	COPING TERMINATION DETAIL
EF05	WINDOW SILL DETAIL
EF06	WINDOW HEAD DETAIL
EF07	WINDOW JAMB DETAIL
EF08	INSIDE CORNER DETAIL
EF09	OUTSIDE CORNER DETAIL
EF10	INTERMEDIATE SUPPORT DETAIL

\\cmcsi.local\dfsroot2\Company\Company_Shared\Folders\Tech\System_Info\Fundermax\System_Details - Fundermax_3d.m page 1 of 46 printed 7/27/2022 9:27 last saved 7/27/2022 9:19

<p style="font-size: small; text-align: center;">THE INFORMATION CONTAINED IN THIS DRAWING IS THE SOLE PROPERTY OF METAL DESIGN SYSTEMS INC. ANY REPRODUCTION, IN PART OR WHOLE, WITHOUT THE WRITTEN PERMISSION OF METAL DESIGN SYSTEMS INC. IS PROHIBITED.</p>	 METAL DESIGN SYSTEMS <small>DESIGNED FOR A PERFECT FIT.</small>	METAL DESIGN SYSTEMS	PROJECT: FUNDERMAX EXPOSED FASTENER			
		103 Chamber Drive Anamosa, IA 52205 Ph. (319) 362-7454	PROJECT NUMBER: ...	DRAWING NUMBER: EF00	SCALE: ...	
		MATERIAL: ...	DRAWING DESCRIPTION: COVER SHEET			DATE: 7/27/22
			DRAWN BY: ...			



THE INFORMATION CONTAINED IN THIS DRAWING IS THE SOLE PROPERTY OF METAL DESIGN SYSTEMS INC. ANY REPRODUCTION, IN PART OR WHOLE, WITHOUT THE WRITTEN PERMISSION OF METAL DESIGN SYSTEMS INC. IS PROHIBITED.



METAL DESIGN SYSTEMS

103 Chamber Drive
Anamosa, IA 52205
Ph. (319) 362-7454

MATERIAL:
...

PROJECT:

FUNDERMAX EXPOSED FASTENER

PROJECT NUMBER:

...

DRAWING NUMBER:

EFPA

SCALE:

NTS

DRAWING DESCRIPTION:

DETAIL LAYOUT

DRAWN BY:

...

DATE:

7/27/22

NOTE:
AIR/MOISTURE BARRIER
INSTALLER MUST PROVIDE
WEATHER TIGHT SEAL AT
ALL BARRIER TERMINATIONS

WATER-RESISTIVE BARRIER (WRB) OVER EXTERIOR SHEATHING BY OTHERS
TREAT ALL FASTENER PENETRATIONS AS PER WRB MANUFACTURER'S RECOMMENDATIONS BY INSTALLER

1"

FIELD DRILL 4mm HOLE IN EXTRUSION

FACTORY DRILLED HOLES IN PANEL

SFS TW-S-DI3-5.5x25
OR SFS TDA-S-D16-5.8x29
PAINTED TO MATCH PANEL

1 1/2"

3/8"

1 1/2"

4-1314-00 OR 4-1315-00 EXTRUSION BY MDSI

8mm OR 10mm EF FUNDERMAX PANEL

SUBSTRATE SUITABLE FOR STRUCTURAL AND CODE COMPLIANCE

SHIMS AND STAINLESS STEEL FASTENERS BY INSTALLER (SIZE, TYPE, AND QUANTITY AS APPROPRIATE FOR CONDITIONS 16" OC MAX)

\\cmcsi.local\dfsroot2\Company_Shared_Folders\Tech\System_Info\Fundermax\System_Details - Fundermax_3d.m page 3 of 46 printed 7/27/2022 9:27 last saved 7/27/2022 9:19

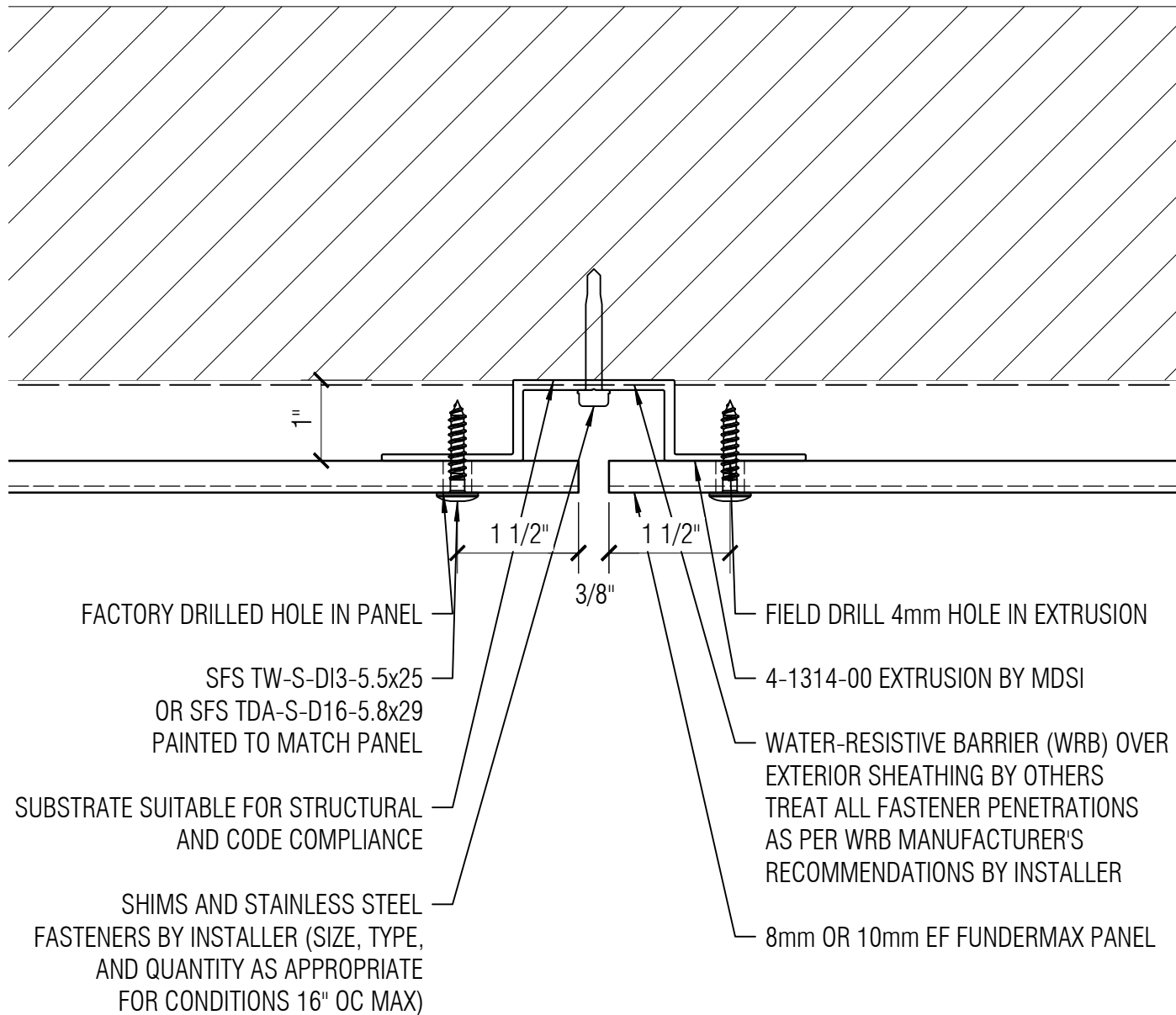
THE INFORMATION CONTAINED IN THIS DRAWING IS THE SOLE PROPERTY OF METAL DESIGN SYSTEMS INC. ANY REPRODUCTION, IN PART OR WHOLE, WITHOUT THE WRITTEN PERMISSION OF METAL DESIGN SYSTEMS INC. IS PROHIBITED.

METAL DESIGN SYSTEMS
DESIGNED FOR A PERFECT FIT.

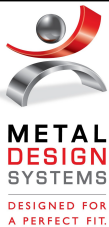
METAL DESIGN SYSTEMS
103 Chamber Drive
Anamosa, IA 52205
Ph. (319) 362-7454
MATERIAL:
...

PROJECT: FUNDERMAX EXPOSED FASTENER		
PROJECT NUMBER: ...	DRAWING NUMBER: EF01	SCALE: 6" = 1'-0"
DRAWING DESCRIPTION: HORIZONTAL JOINT DETAIL		
DRAWN BY: ...		DATE: 7/27/22

NOTE:
AIR/MOISTURE BARRIER
INSTALLER MUST PROVIDE
WEATHER TIGHT SEAL AT
ALL BARRIER TERMINATIONS



THE INFORMATION CONTAINED IN THIS
DRAWING IS THE SOLE PROPERTY OF
METAL DESIGN SYSTEMS INC.
ANY REPRODUCTION, IN PART OR WHOLE,
WITHOUT THE WRITTEN PERMISSION OF
METAL DESIGN SYSTEMS INC. IS PROHIBITED.



METAL DESIGN SYSTEMS

103 Chamber Drive
Anamosa, IA 52205
Ph. (319) 362-7454

MATERIAL:
...

PROJECT:

FUNDERMAX EXPOSED FASTENER

PROJECT NUMBER:
...

DRAWING NUMBER:
EF02

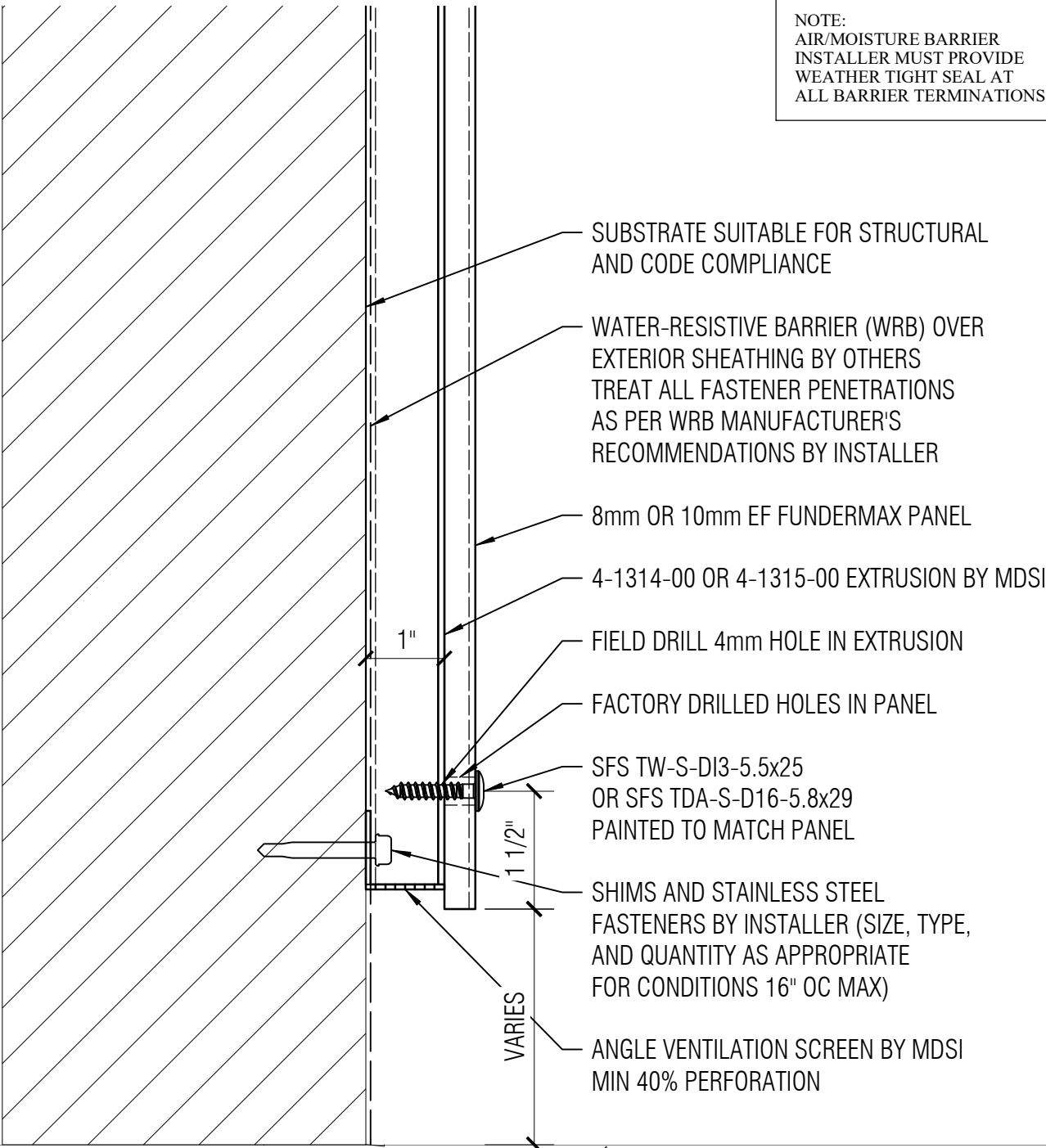
SCALE:
6" = 1'-0"

DRAWING DESCRIPTION:
VERTICAL JOINT DETAIL

DRAWN BY:
...

DATE:
7/27/22

NOTE:
 AIR/MOISTURE BARRIER
 INSTALLER MUST PROVIDE
 WEATHER TIGHT SEAL AT
 ALL BARRIER TERMINATIONS



- SUBSTRATE SUITABLE FOR STRUCTURAL AND CODE COMPLIANCE
- WATER-RESISTIVE BARRIER (WRB) OVER EXTERIOR SHEATHING BY OTHERS TREAT ALL FASTENER PENETRATIONS AS PER WRB MANUFACTURER'S RECOMMENDATIONS BY INSTALLER
- 8mm OR 10mm EF FUNDERMAX PANEL
- 4-1314-00 OR 4-1315-00 EXTRUSION BY MDSI
- FIELD DRILL 4mm HOLE IN EXTRUSION
- FACTORY DRILLED HOLES IN PANEL
- SFS TW-S-DI3-5.5x25 OR SFS TDA-S-D16-5.8x29 PAINTED TO MATCH PANEL
- SHIMS AND STAINLESS STEEL FASTENERS BY INSTALLER (SIZE, TYPE, AND QUANTITY AS APPROPRIATE FOR CONDITIONS 16" OC MAX)
- ANGLE VENTILATION SCREEN BY MDSI MIN 40% PERFORATION

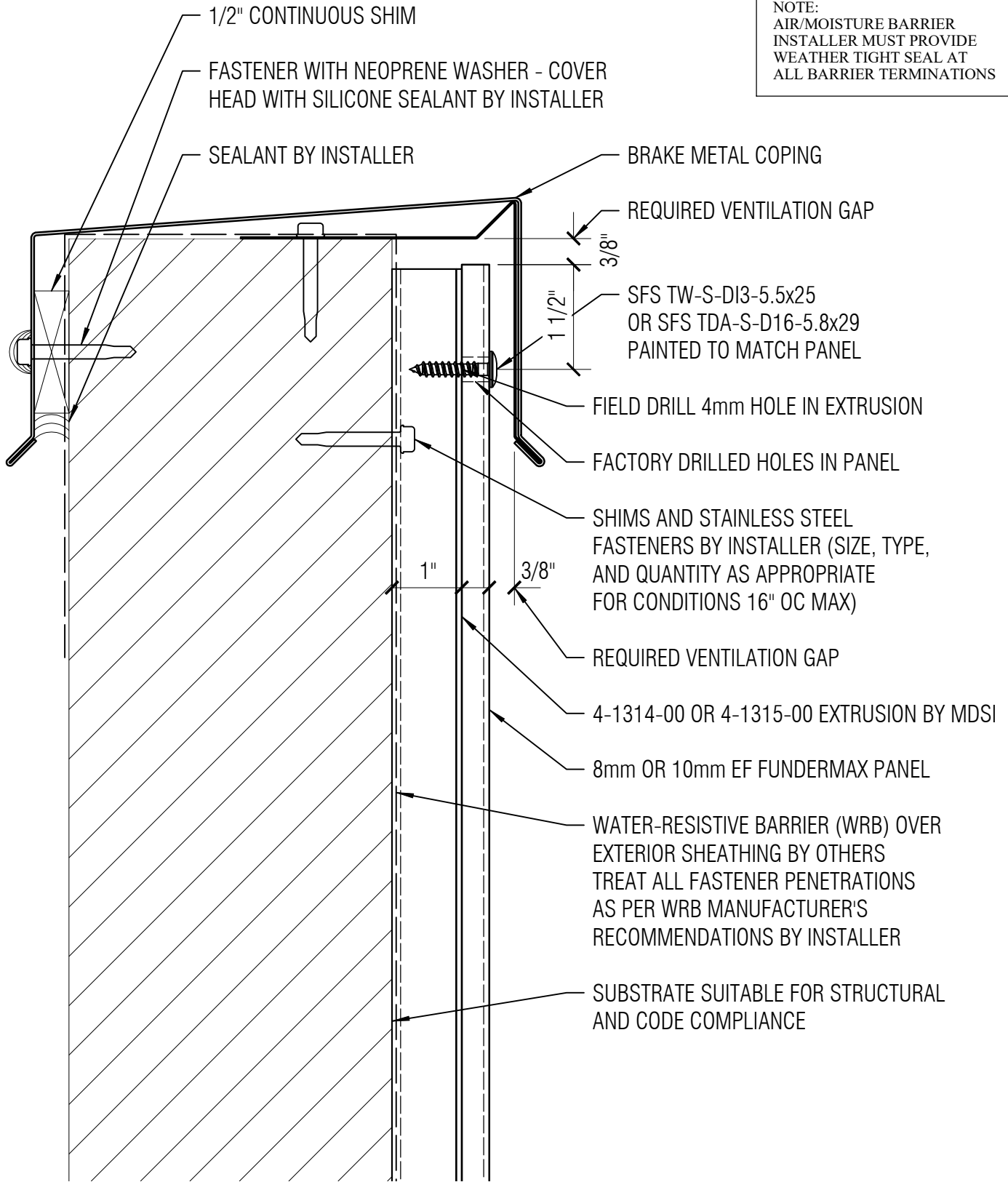
THE INFORMATION CONTAINED IN THIS DRAWING IS THE SOLE PROPERTY OF METAL DESIGN SYSTEMS INC. ANY REPRODUCTION, IN PART OR WHOLE, WITHOUT THE WRITTEN PERMISSION OF METAL DESIGN SYSTEMS INC. IS PROHIBITED.



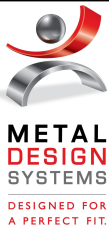
METAL DESIGN SYSTEMS
 103 Chamber Drive
 Anamosa, IA 52205
 Ph. (319) 362-7454
 MATERIAL:
 ...

PROJECT: FUNDERMAX EXPOSED FASTENER		
PROJECT NUMBER: ...	DRAWING NUMBER: EF03	SCALE: 6" = 1'-0"
DRAWING DESCRIPTION: GRADE TERMINATION DETAIL		
DRAWN BY: ...		DATE: 7/27/22

NOTE:
 AIR/MOISTURE BARRIER
 INSTALLER MUST PROVIDE
 WEATHER TIGHT SEAL AT
 ALL BARRIER TERMINATIONS



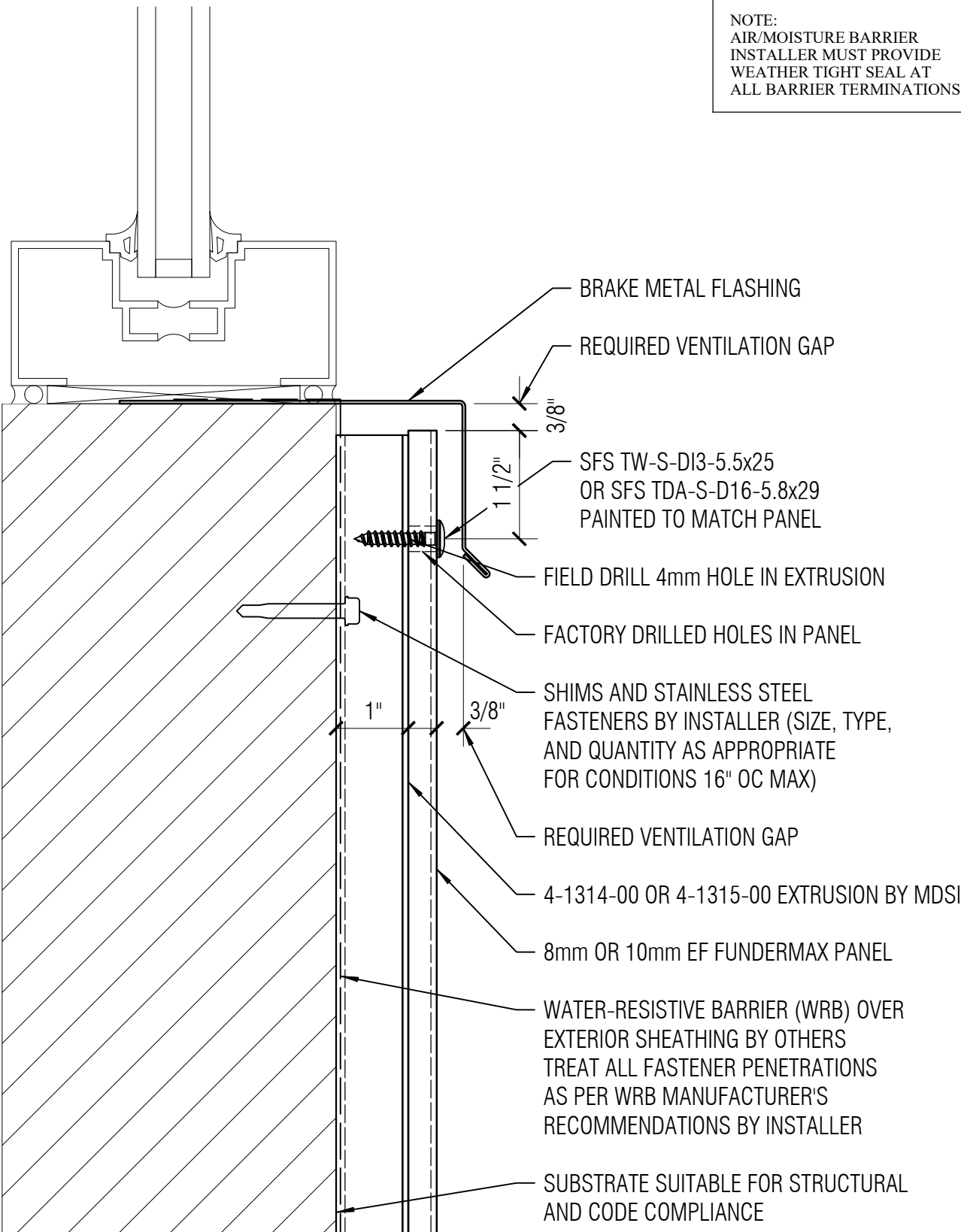
THE INFORMATION CONTAINED IN THIS DRAWING IS THE SOLE PROPERTY OF METAL DESIGN SYSTEMS INC. ANY REPRODUCTION, IN PART OR WHOLE, WITHOUT THE WRITTEN PERMISSION OF METAL DESIGN SYSTEMS INC. IS PROHIBITED.



METAL DESIGN SYSTEMS
 103 Chamber Drive
 Anamosa, IA 52205
 Ph. (319) 362-7454
 MATERIAL:
 ...

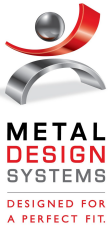
PROJECT: FUNDERMAX EXPOSED FASTENER		
PROJECT NUMBER: ...	DRAWING NUMBER: EF04	SCALE: 6" = 1'-0"
DRAWING DESCRIPTION: COPING TERMINATION DETAIL		
DRAWN BY: ...		DATE: 7/27/22

NOTE:
AIR/MOISTURE BARRIER
INSTALLER MUST PROVIDE
WEATHER TIGHT SEAL AT
ALL BARRIER TERMINATIONS



\\cmcsi.local\dfsroot2\Company\Shared_Folders\Tech\System_Info\Fundermax\System Details - Fundermax_3d.m page 7 of 46 printed 7/27/2022 9:27 last saved 7/27/2022 9:19

THE INFORMATION CONTAINED IN THIS DRAWING IS THE SOLE PROPERTY OF METAL DESIGN SYSTEMS INC. ANY REPRODUCTION, IN PART OR WHOLE, WITHOUT THE WRITTEN PERMISSION OF METAL DESIGN SYSTEMS INC. IS PROHIBITED.



METAL DESIGN SYSTEMS

103 Chamber Drive
Anamosa, IA 52205
Ph. (319) 362-7454

MATERIAL:
...

PROJECT:

FUNDERMAX EXPOSED FASTENER

PROJECT NUMBER:
...

DRAWING NUMBER:
EF05

SCALE:
6" = 1'-0"

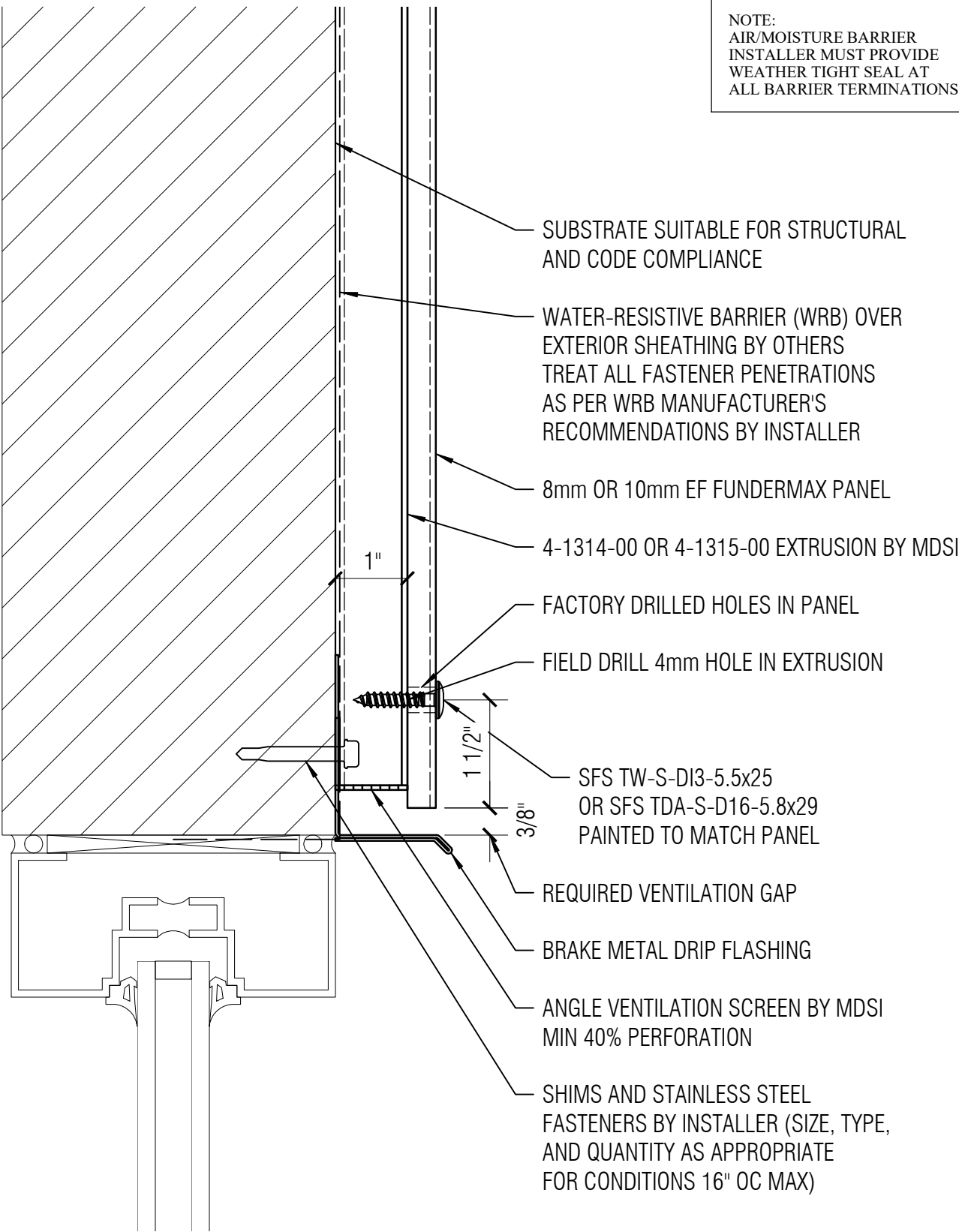
DRAWING DESCRIPTION:

SILL TERMINATION DETAIL

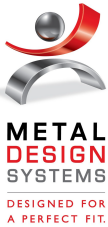
DRAWN BY:
...

DATE:
7/27/22

NOTE:
AIR/MOISTURE BARRIER
INSTALLER MUST PROVIDE
WEATHER TIGHT SEAL AT
ALL BARRIER TERMINATIONS



THE INFORMATION CONTAINED IN THIS DRAWING IS THE SOLE PROPERTY OF METAL DESIGN SYSTEMS INC. ANY REPRODUCTION, IN PART OR WHOLE, WITHOUT THE WRITTEN PERMISSION OF METAL DESIGN SYSTEMS INC. IS PROHIBITED.



METAL DESIGN SYSTEMS

103 Chamber Drive
Anamosa, IA 52205
Ph. (319) 362-7454

MATERIAL:
...

PROJECT:

FUNDERMAX EXPOSED FASTENER

PROJECT NUMBER:
...

DRAWING NUMBER:
EF06

SCALE:
6" = 1'-0"

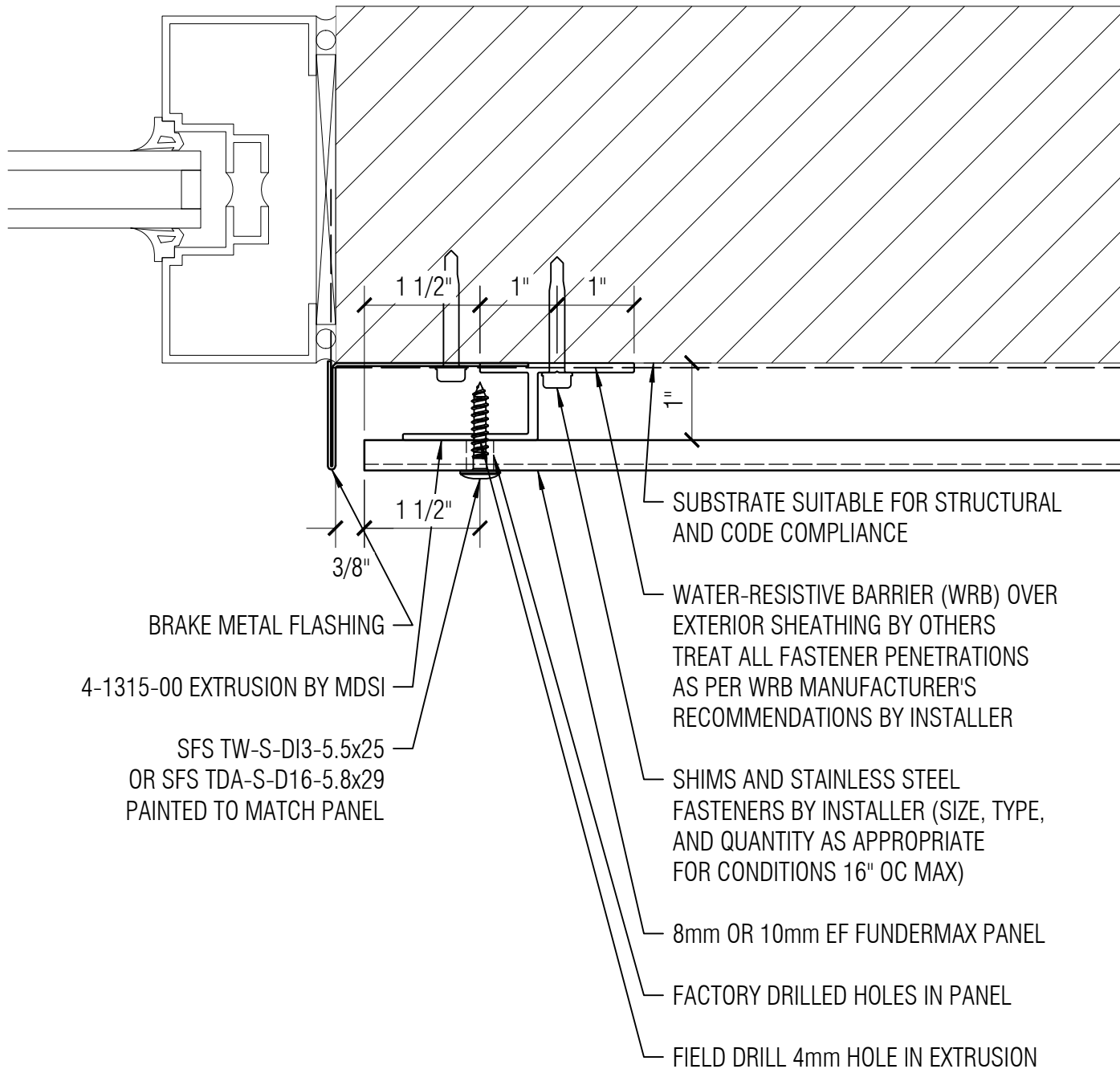
DRAWING DESCRIPTION:

WINDOW HEAD TERMINATION DETAIL

DRAWN BY:
...

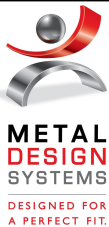
DATE:
7/27/22

NOTE:
 AIR/MOISTURE BARRIER
 INSTALLER MUST PROVIDE
 WEATHER TIGHT SEAL AT
 ALL BARRIER TERMINATIONS



\\cmcsi.local\dfsroot2\Company\Shared\Folders\Tech\System\Info\Fundermax\System Details - Fundermax 3d.m page 9 of 46 printed 7/27/2022 9:27 last saved 7/27/2022 9:19

THE INFORMATION CONTAINED IN THIS DRAWING IS THE SOLE PROPERTY OF METAL DESIGN SYSTEMS INC. ANY REPRODUCTION, IN PART OR WHOLE, WITHOUT THE WRITTEN PERMISSION OF METAL DESIGN SYSTEMS INC. IS PROHIBITED.



METAL DESIGN SYSTEMS

103 Chamber Drive
 Anamosa, IA 52205
 Ph. (319) 362-7454

MATERIAL:
 ...

PROJECT:

FUNDERMAX EXPOSED FASTENER

PROJECT NUMBER:

...

DRAWING NUMBER:

EF07

SCALE:

6" = 1'-0"

DRAWING DESCRIPTION:

WINDOW/DOOR JAMB DETAIL

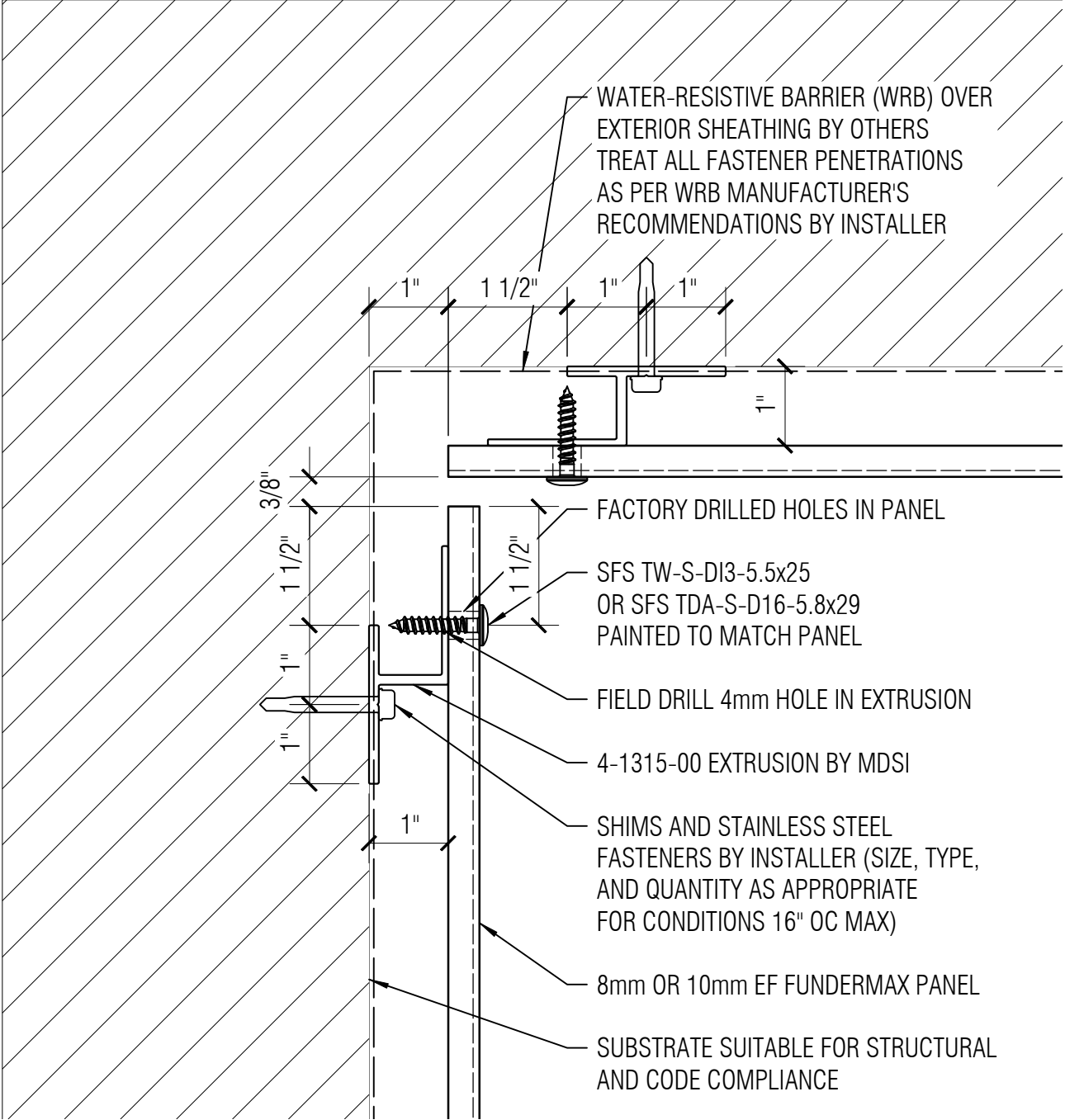
DRAWN BY:

...

DATE:

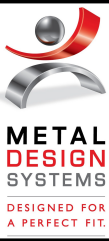
7/27/22

NOTE:
 AIR/MOISTURE BARRIER
 INSTALLER MUST PROVIDE
 WEATHER TIGHT SEAL AT
 ALL BARRIER TERMINATIONS



\\cmcsi.local\dfsroot2\Company_Shared_Folders\Tech\System_Info\Fundermax\System_Details - Fundermax_3d.m page 10 of 46 printed 7/27/2022 9:27 last saved 7/27/2022 9:19

THE INFORMATION CONTAINED IN THIS DRAWING IS THE SOLE PROPERTY OF METAL DESIGN SYSTEMS INC. ANY REPRODUCTION, IN PART OR WHOLE, WITHOUT THE WRITTEN PERMISSION OF METAL DESIGN SYSTEMS INC. IS PROHIBITED.

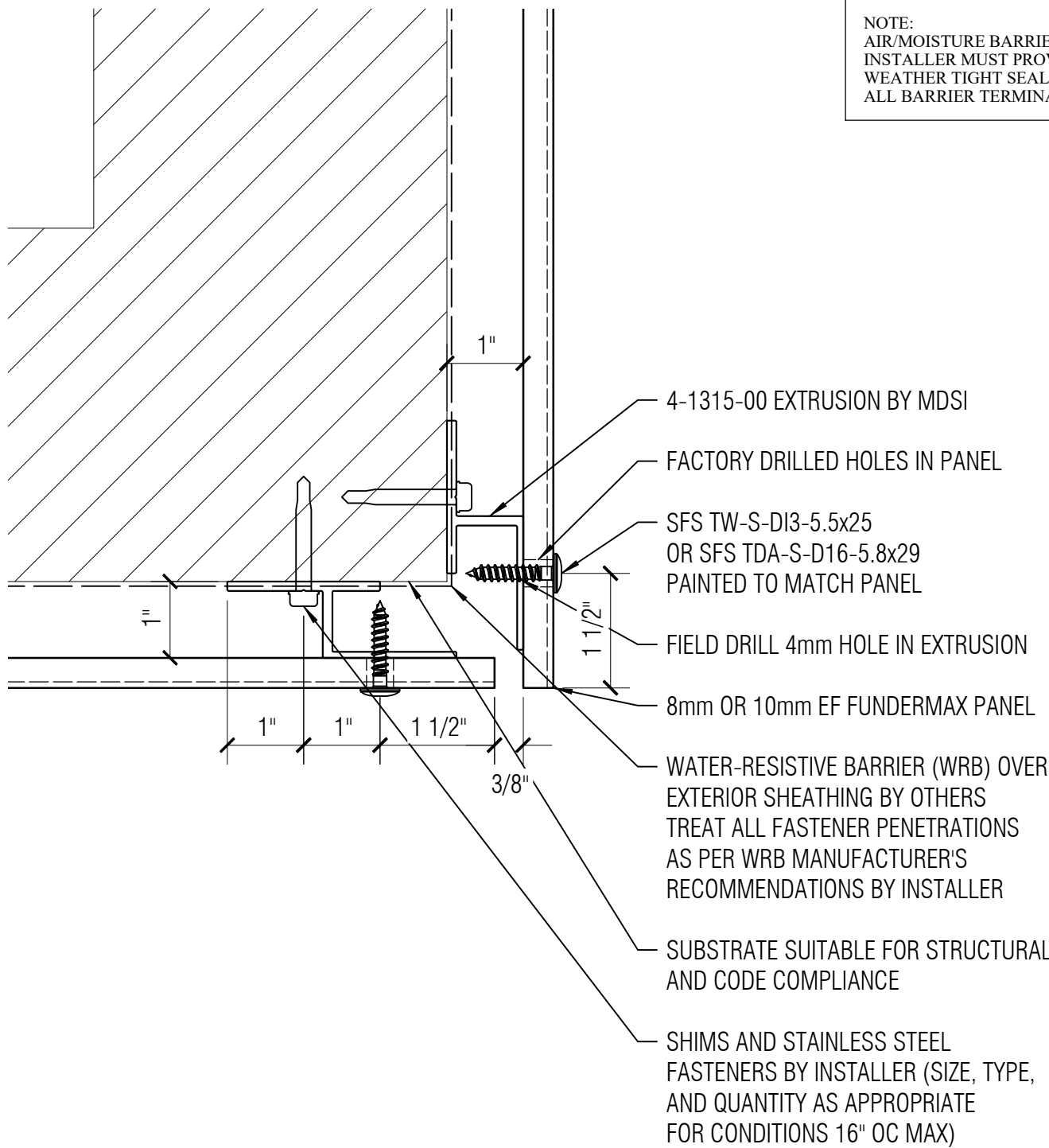


METAL DESIGN SYSTEMS
 103 Chamber Drive
 Anamosa, IA 52205
 Ph. (319) 362-7454

MATERIAL:
 ...

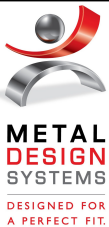
PROJECT: FUNDERMAX EXPOSED FASTENER		
PROJECT NUMBER: ...	DRAWING NUMBER: EF08	SCALE: 6" = 1'-0"
DRAWING DESCRIPTION: INSIDE CORNER DETAIL		
DRAWN BY: ...	DATE: 7/27/22	

NOTE:
AIR/MOISTURE BARRIER
INSTALLER MUST PROVIDE
WEATHER TIGHT SEAL AT
ALL BARRIER TERMINATIONS



\\cmcsi.local\dfsroot2\Company\Company_Shared\Folders\Tech\System_Info\Fundermax\System_Details - Fundermax_3d.m page 11 of 46 printed 7/27/2022 9:27 last saved 7/27/2022 9:19

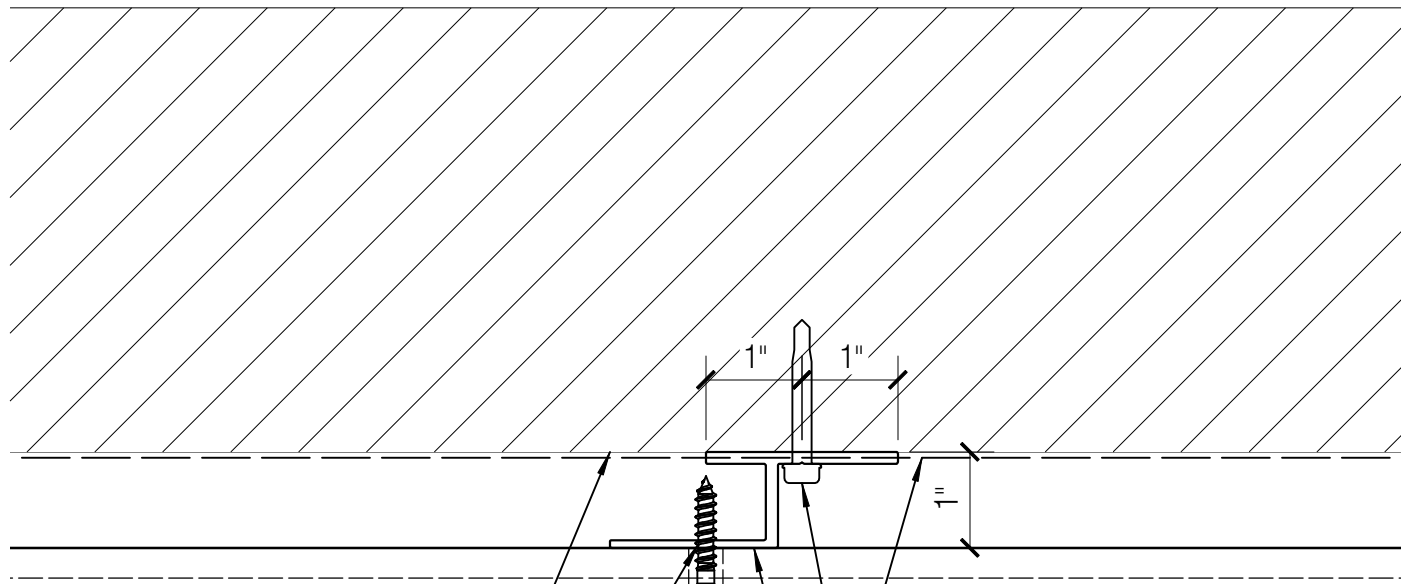
THE INFORMATION CONTAINED IN THIS DRAWING IS THE SOLE PROPERTY OF METAL DESIGN SYSTEMS INC. ANY REPRODUCTION, IN PART OR WHOLE, WITHOUT THE WRITTEN PERMISSION OF METAL DESIGN SYSTEMS INC. IS PROHIBITED.



METAL DESIGN SYSTEMS
103 Chamber Drive
Anamosa, IA 52205
Ph. (319) 362-7454
MATERIAL:
...

PROJECT: FUNDERMAX EXPOSED FASTENER		
PROJECT NUMBER: ...	DRAWING NUMBER: EF09	SCALE: 6" = 1'-0"
DRAWING DESCRIPTION: OUTSIDE CORNER DETAIL		
DRAWN BY: ...		DATE: 7/27/22

NOTE:
 AIR/MOISTURE BARRIER
 INSTALLER MUST PROVIDE
 WEATHER TIGHT SEAL AT
 ALL BARRIER TERMINATIONS



SUBSTRATE SUITABLE FOR STRUCTURAL
 AND CODE COMPLIANCE

8mm OR 10mm EF FUNDERMAX PANEL

FIELD DRILL 4mm HOLE IN EXTRUSION

FACTORY DRILLED HOLE IN PANEL

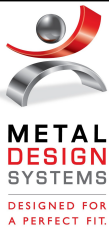
SFS TW-S-DI3-5.5x25
 OR SFS TDA-S-D16-5.8x29
 PAINTED TO MATCH PANEL

WATER-RESISTIVE BARRIER (WRB) OVER
 EXTERIOR SHEATHING BY OTHERS
 TREAT ALL FASTENER PENETRATIONS
 AS PER WRB MANUFACTURER'S
 RECOMMENDATIONS BY INSTALLER

SHIMS AND STAINLESS STEEL
 FASTENERS BY INSTALLER (SIZE, TYPE,
 AND QUANTITY AS APPROPRIATE
 FOR CONDITIONS 16" OC MAX)

4-1315-00 EXTRUSION BY MDSI

THE INFORMATION CONTAINED IN THIS
 DRAWING IS THE SOLE PROPERTY OF
 METAL DESIGN SYSTEMS INC.
 ANY REPRODUCTION, IN PART OR WHOLE,
 WITHOUT THE WRITTEN PERMISSION OF
 METAL DESIGN SYSTEMS INC. IS PROHIBITED.



METAL DESIGN SYSTEMS

103 Chamber Drive
 Anamosa, IA 52205
 Ph. (319) 362-7454

MATERIAL:

...

PROJECT:

FUNDERMAX EXPOSED FASTENER

PROJECT NUMBER:

...

DRAWING NUMBER:

EF10

SCALE:

6" = 1'-0"

DRAWING DESCRIPTION:

INTERMEDIATE SUPPORT DETAIL

DRAWN BY:

...

DATE:

7/27/22

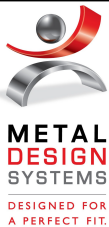
FUNDERMAX

EXPOSED FASTENER WITH CONTINUOUS INSULATION STANDARD APPLICATION

DRAWING INDEX

EFCI00	COVER SHEET
EFCIPA	DETAIL LAYOUT
EFCI01	HORIZONTAL JOINT DETAIL
EFCI02	VERTICAL JOINT DETAIL
EFCI03	GRADE TERMINATION DETAIL
EFCI04	COPING TERMINATION DETAIL
EFCI05	WINDOW SILL DETAIL
EFCI06	WINDOW HEAD DETAIL
EFCI07	WINDOW JAMB DETAIL
EFCI08	INSIDE CORNER DETAIL
EFCI09	OUTSIDE CORNER DETAIL
EFCI10	INTERMEDIATE SUPPORT DETAIL

THE INFORMATION CONTAINED IN THIS DRAWING IS THE SOLE PROPERTY OF METAL DESIGN SYSTEMS INC. ANY REPRODUCTION, IN PART OR WHOLE, WITHOUT THE WRITTEN PERMISSION OF METAL DESIGN SYSTEMS INC. IS PROHIBITED.



METAL DESIGN SYSTEMS

103 Chamber Drive
Anamosa, IA 52205
Ph. (319) 362-7454

MATERIAL:
...

PROJECT:

FUNDERMAX EXPOSED FASTENER - CI

PROJECT NUMBER:
...

DRAWING NUMBER:
EFCI00

SCALE:
...

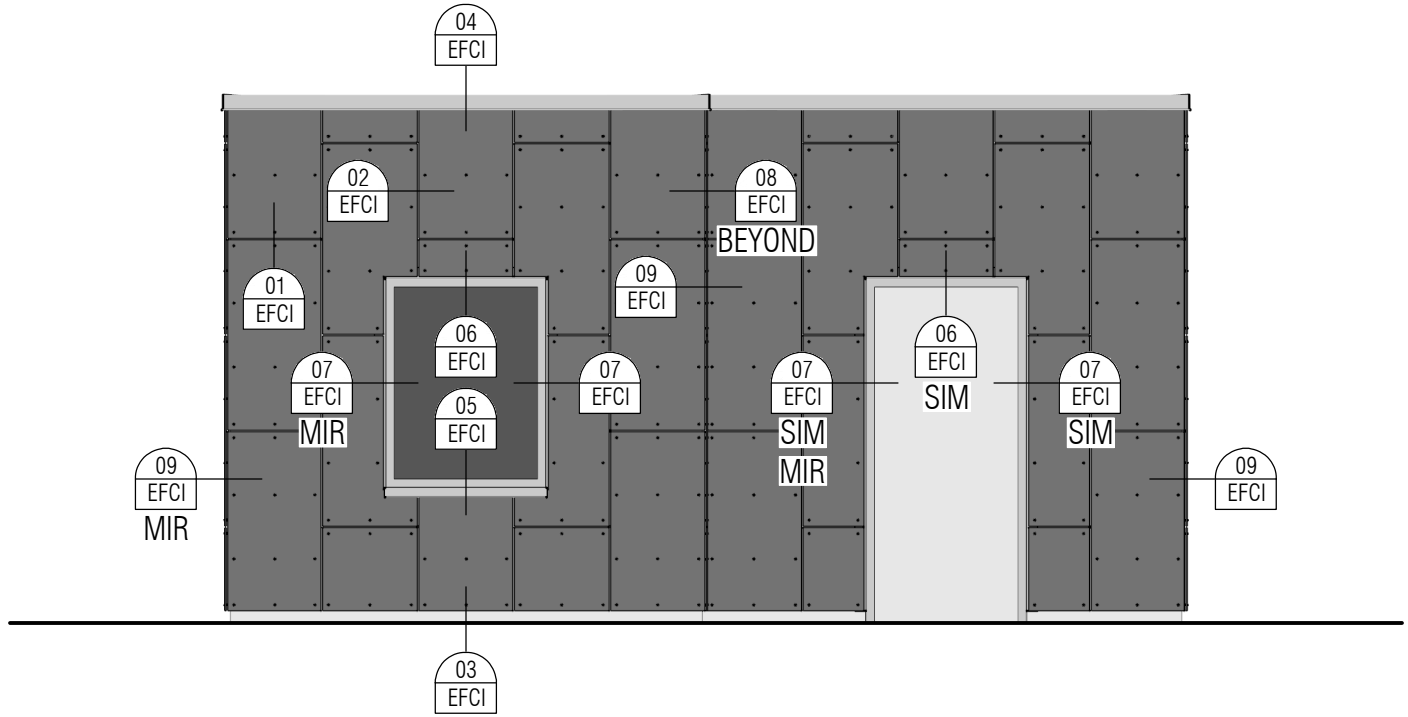
DRAWING DESCRIPTION:

COVER SHEET

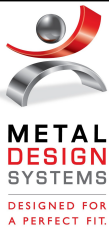
DRAWN BY:
...

DATE:

7/27/22



THE INFORMATION CONTAINED IN THIS DRAWING IS THE SOLE PROPERTY OF METAL DESIGN SYSTEMS INC. ANY REPRODUCTION, IN PART OR WHOLE, WITHOUT THE WRITTEN PERMISSION OF METAL DESIGN SYSTEMS INC. IS PROHIBITED.



METAL DESIGN SYSTEMS

103 Chamber Drive
Anamosa, IA 52205
Ph. (319) 362-7454

MATERIAL:
...

PROJECT:

FUNDERMAX EXPOSED FASTENER - CI

PROJECT NUMBER:

...

DRAWING NUMBER:

EFCIPA

SCALE:

NTS

DRAWING DESCRIPTION:

DETAIL LAYOUT

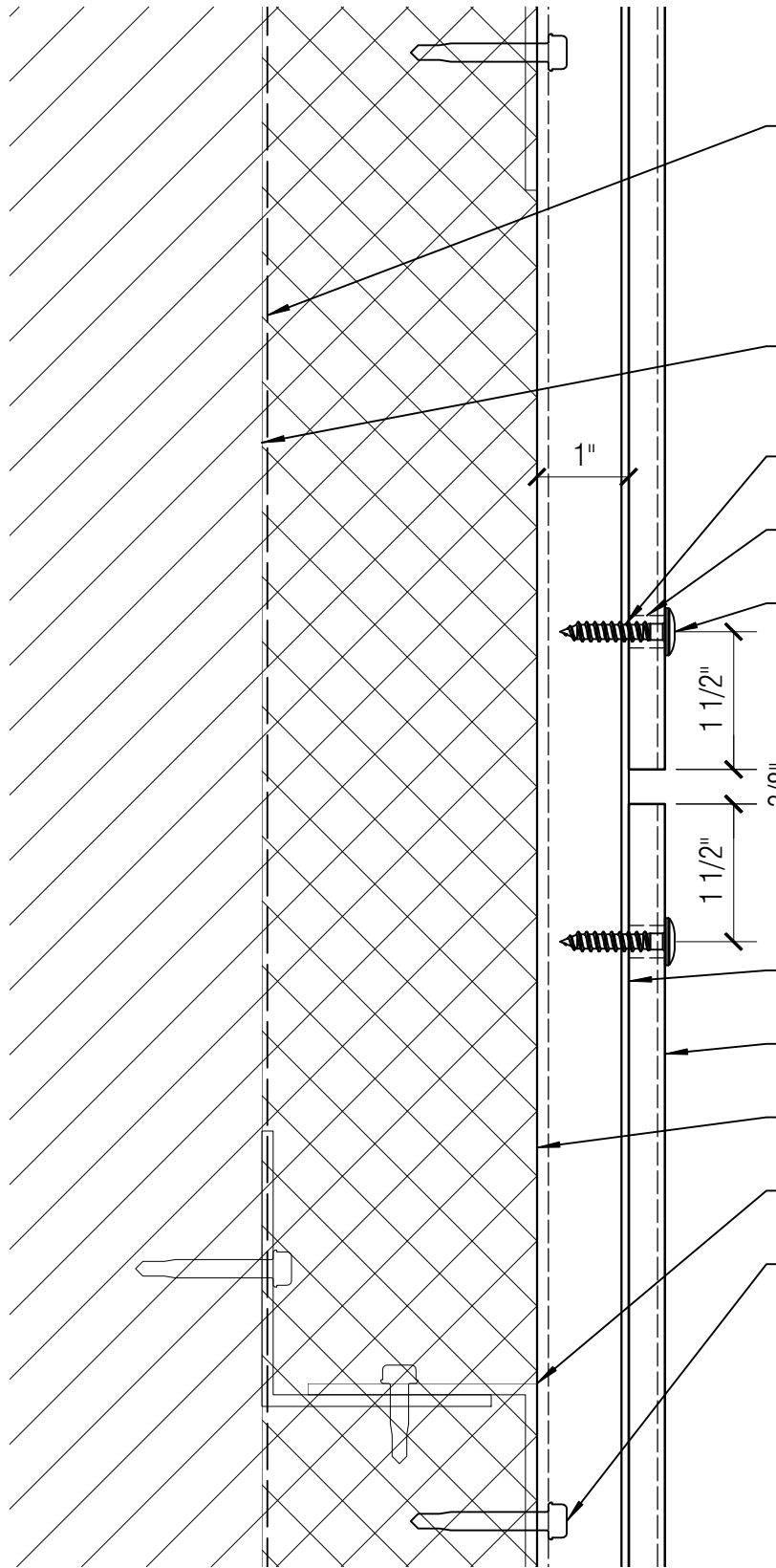
DRAWN BY:

...

DATE:

7/27/22

NOTE:
AIR/MOISTURE BARRIER
INSTALLER MUST PROVIDE
WEATHER TIGHT SEAL AT
ALL BARRIER TERMINATIONS



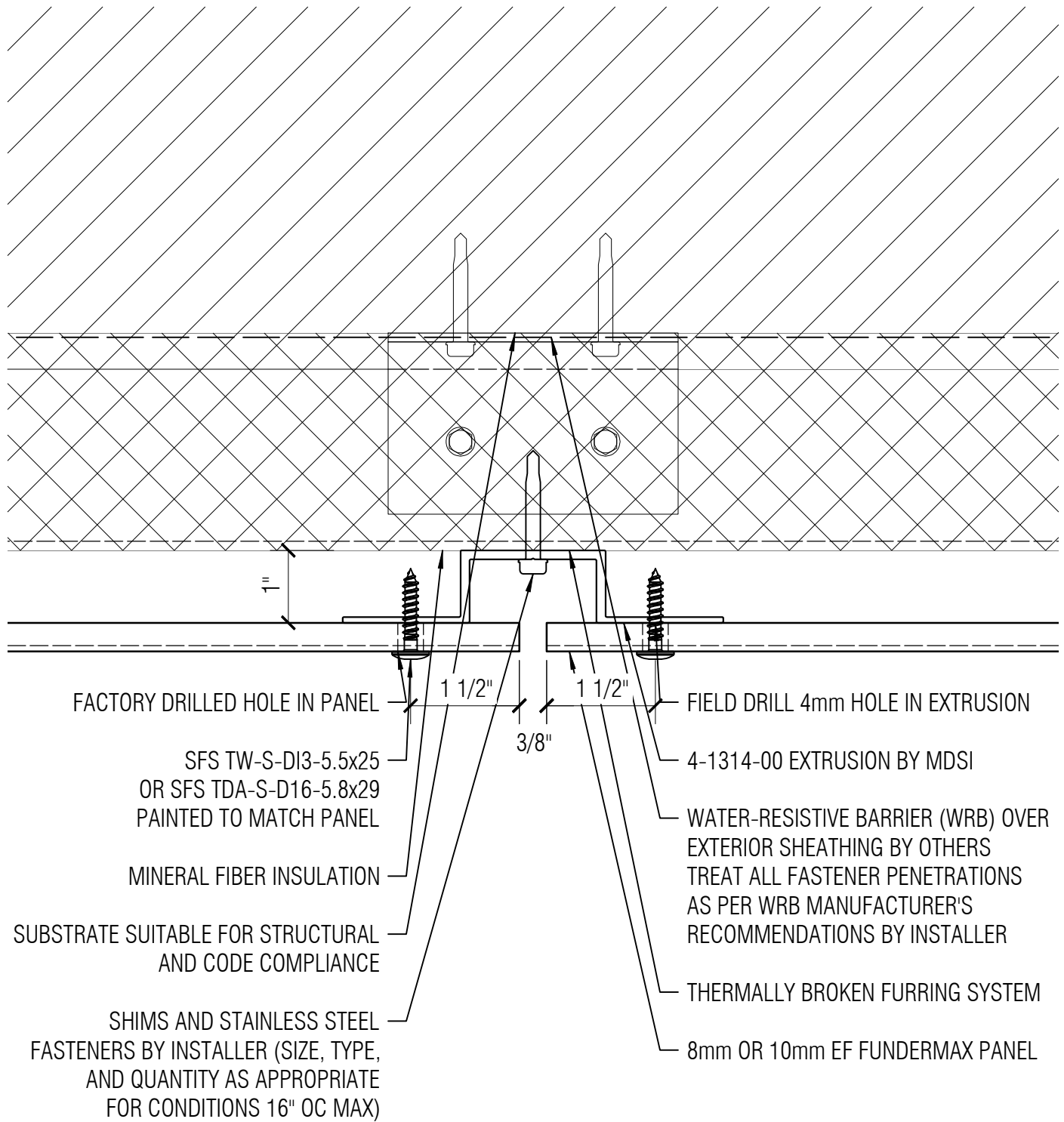
- WATER-RESISTIVE EXTERIOR SHEATHING BY OTHERS
TREAT ALL FASTENER PENETRATIONS AS PER WRB MANUFACTURER'S RECOMMENDATIONS BY INSTALLER
- SUBSTRATE SUITABLE FOR STRUCTURAL AND CODE COMPLIANCE
- FIELD DRILL 4mm HOLE IN EXTRUSION
- FACTORY DRILLED HOLES IN PANEL
- SFS TW-S-DI3-5.5x25
OR SFS TDA-S-D16-5.8x29
PAINTED TO MATCH PANEL
- 1 1/2"
- 3/8"
- 1 1/2"
- 4-1314-00 OR 4-1315-00 EXTRUSION BY MDSI
- 8mm OR 10mm EF FUNDERMAX PANEL
- MINERAL FIBER INSULATION
- THERMALLY BROKEN FURRING SYSTEM
- SHIMS AND STAINLESS STEEL FASTENERS BY INSTALLER (SIZE, TYPE, AND QUANTITY AS APPROPRIATE FOR CONDITIONS 16" OC MAX)

THE INFORMATION CONTAINED IN THIS DRAWING IS THE SOLE PROPERTY OF METAL DESIGN SYSTEMS INC. ANY REPRODUCTION, IN PART OR WHOLE, WITHOUT THE WRITTEN PERMISSION OF METAL DESIGN SYSTEMS INC. IS PROHIBITED.



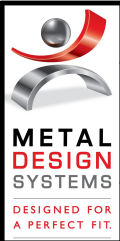
METAL DESIGN SYSTEMS
103 Chamber Drive
Anamosa, IA 52205
Ph. (319) 362-7454
MATERIAL:
...

PROJECT: FUNDERMAX EXPOSED FASTENER - CI		
PROJECT NUMBER: ...	DRAWING NUMBER: EFC101	SCALE: 6" = 1'-0"
DRAWING DESCRIPTION: HORIZONTAL JOINT DETAIL		
DRAWN BY: ...	DATE: 7/27/22	



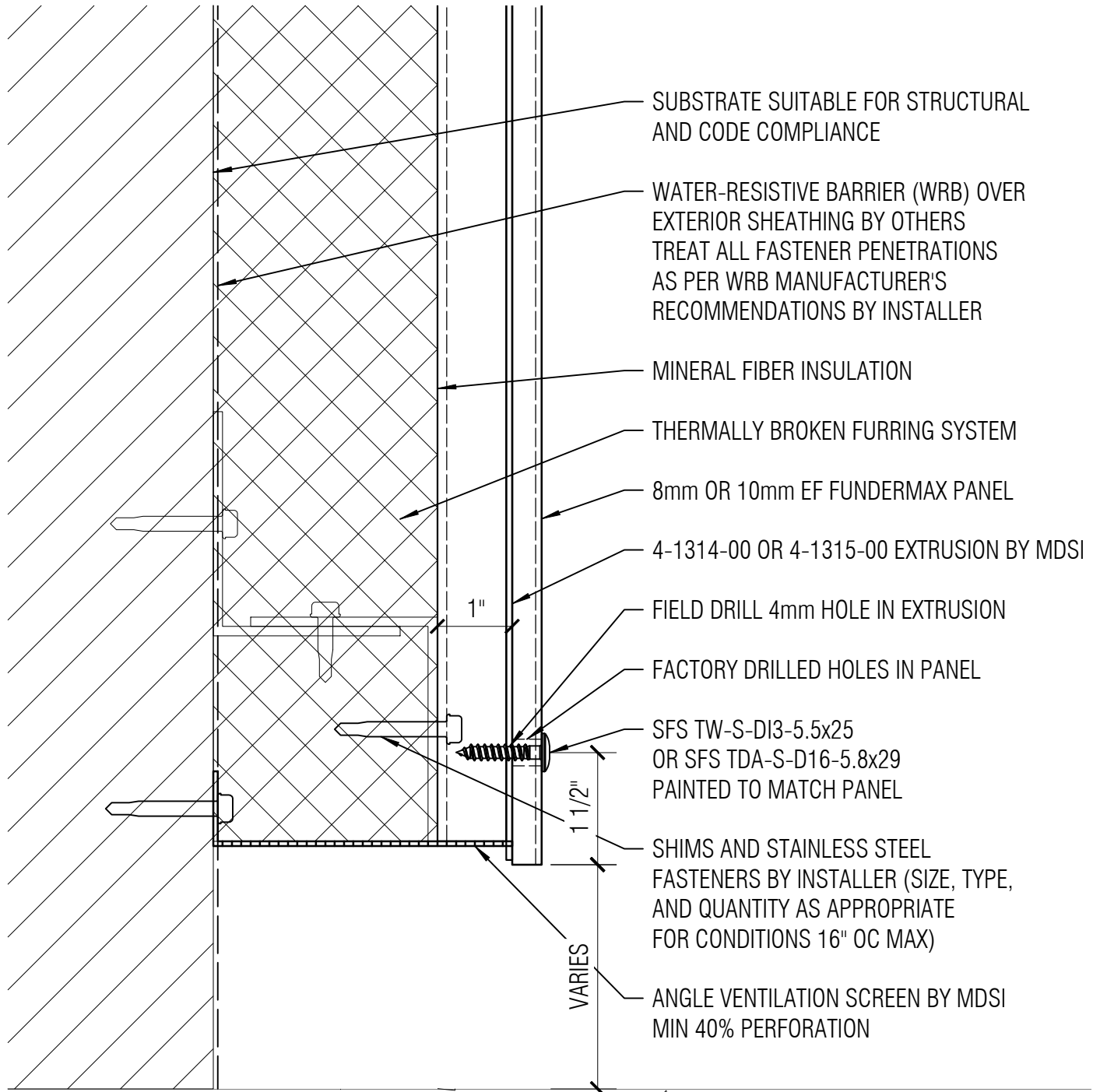
NOTE:
 AIR/MOISTURE BARRIER
 INSTALLER MUST PROVIDE
 WEATHER TIGHT SEAL AT
 ALL BARRIER TERMINATIONS

THE INFORMATION CONTAINED IN THIS DRAWING IS THE SOLE PROPERTY OF METAL DESIGN SYSTEMS INC. ANY REPRODUCTION, IN PART OR WHOLE, WITHOUT THE WRITTEN PERMISSION OF METAL DESIGN SYSTEMS INC. IS PROHIBITED.



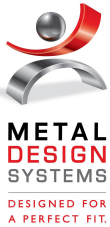
METAL DESIGN SYSTEMS
 103 Chamber Drive
 Anamosa, IA 52205
 Ph. (319) 362-7454
 MATERIAL:
 ...

PROJECT: FUNDERMAX EXPOSED FASTENER - CI		
PROJECT NUMBER: ...	DRAWING NUMBER: EFCI02	SCALE: 6" = 1'-0"
DRAWING DESCRIPTION: VERTICAL JOINT DETAIL		
DRAWN BY: ...	DATE: 7/27/22	



NOTE:
AIR/MOISTURE BARRIER
INSTALLER MUST PROVIDE
WEATHER TIGHT SEAL AT
ALL BARRIER TERMINATIONS

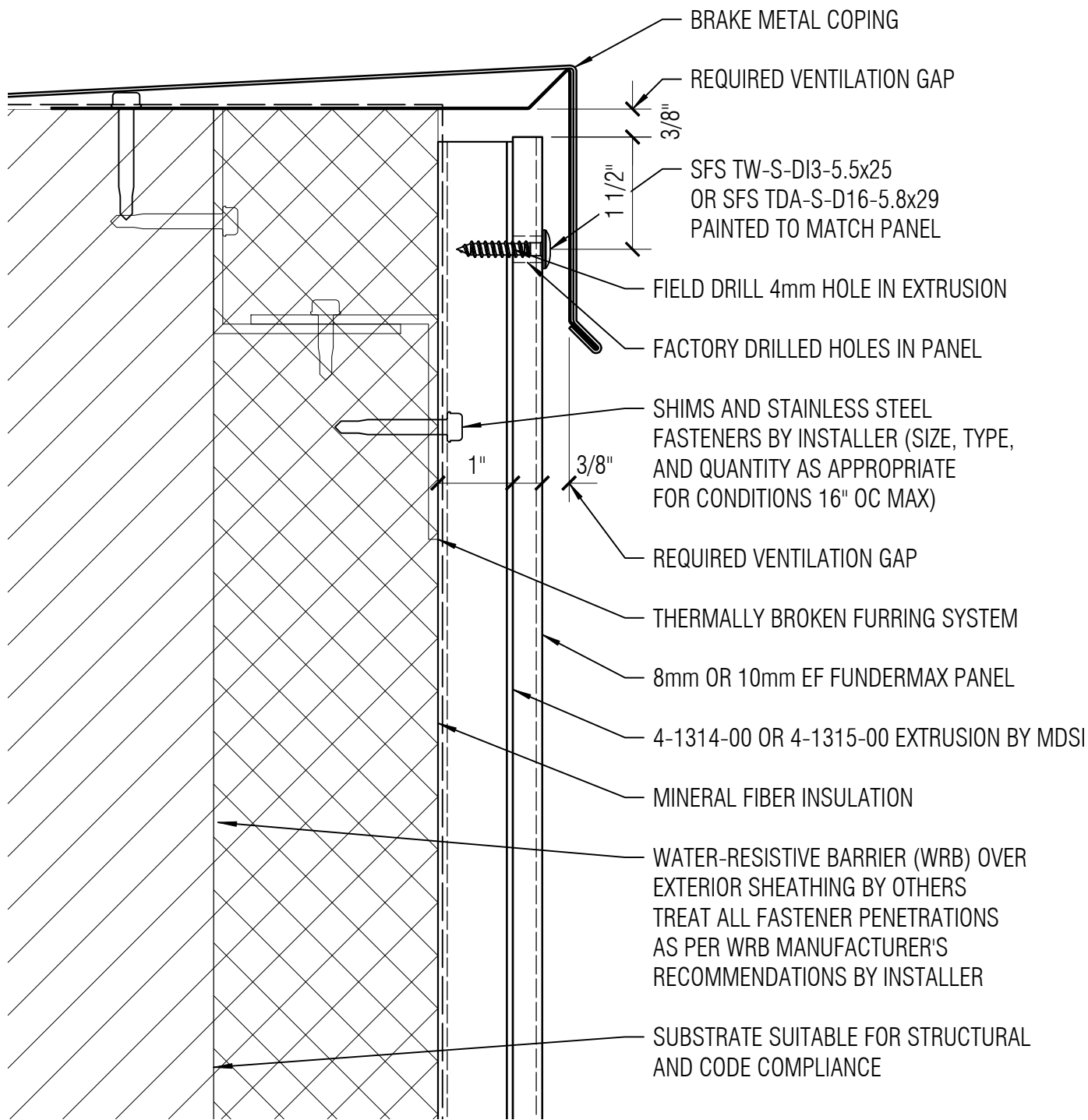
THE INFORMATION CONTAINED IN THIS DRAWING IS THE SOLE PROPERTY OF METAL DESIGN SYSTEMS INC. ANY REPRODUCTION, IN PART OR WHOLE, WITHOUT THE WRITTEN PERMISSION OF METAL DESIGN SYSTEMS INC. IS PROHIBITED.



METAL DESIGN SYSTEMS
 103 Chamber Drive
 Anamosa, IA 52205
 Ph. (319) 362-7454
 MATERIAL: ...

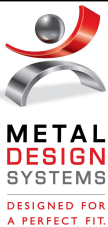
PROJECT: FUNDERMAX EXPOSED FASTENER - CI		
PROJECT NUMBER: ...	DRAWING NUMBER: EFCI03	SCALE: 6" = 1'-0"
DRAWING DESCRIPTION: GRADE TERMINATION DETAIL		
DRAWN BY: ...		DATE: 7/27/22

NOTE:
AIR/MOISTURE BARRIER
INSTALLER MUST PROVIDE
WEATHER TIGHT SEAL AT
ALL BARRIER TERMINATIONS



\\cmcsi.local\dfsroot2\Company\Shared_Folders\Tech\System_Info\Fundermax\System Details - Fundermax_3d.m page 29 of 46 printed 7/27/2022 9:27 last saved 7/27/2022 9:19

THE INFORMATION CONTAINED IN THIS DRAWING IS THE SOLE PROPERTY OF METAL DESIGN SYSTEMS INC. ANY REPRODUCTION, IN PART OR WHOLE, WITHOUT THE WRITTEN PERMISSION OF METAL DESIGN SYSTEMS INC. IS PROHIBITED.



METAL DESIGN SYSTEMS

103 Chamber Drive
Anamosa, IA 52205
Ph. (319) 362-7454

MATERIAL:
...

PROJECT:

FUNDERMAX EXPOSED FASTENER - CI

PROJECT NUMBER:
...

DRAWING NUMBER:
EFCI04

SCALE:
6" = 1'-0"

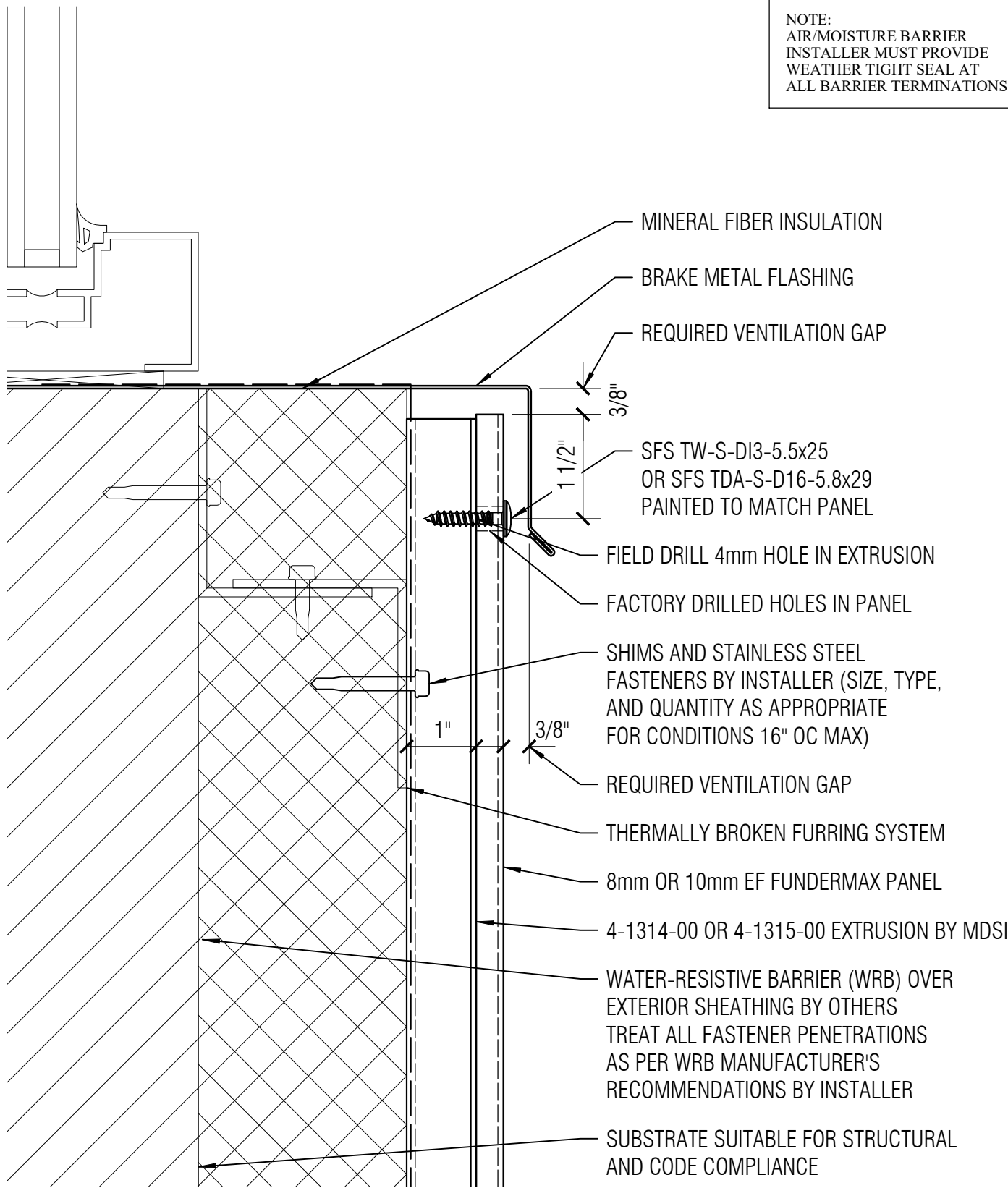
DRAWING DESCRIPTION:

COPING TERMINATION DETAIL

DRAWN BY:
...

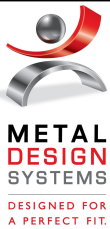
DATE:
7/27/22

NOTE:
AIR/MOISTURE BARRIER
INSTALLER MUST PROVIDE
WEATHER TIGHT SEAL AT
ALL BARRIER TERMINATIONS



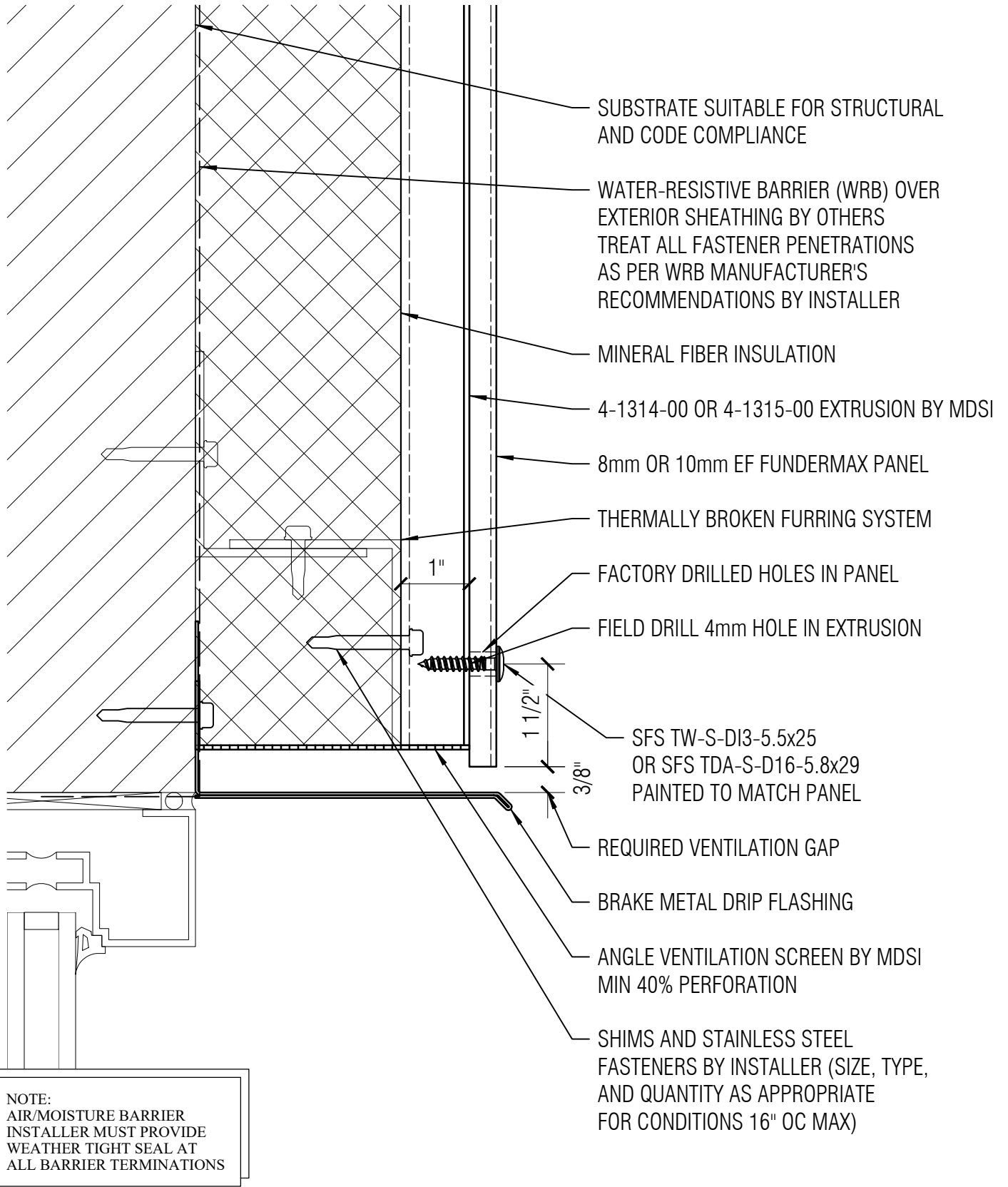
\\cmcsi.local\dfsroot2\Company\Shared_Folders\Tech\System_Info\Fundermax\System Details - Fundermax_3d.m page 30 of 46 printed 7/27/2022 9:27 last saved 7/27/2022 9:19

THE INFORMATION CONTAINED IN THIS DRAWING IS THE SOLE PROPERTY OF METAL DESIGN SYSTEMS INC. ANY REPRODUCTION, IN PART OR WHOLE, WITHOUT THE WRITTEN PERMISSION OF METAL DESIGN SYSTEMS INC. IS PROHIBITED.



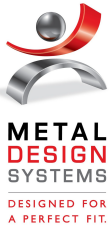
METAL DESIGN SYSTEMS
103 Chamber Drive
Anamosa, IA 52205
Ph. (319) 362-7454

PROJECT: FUNDERMAX EXPOSED FASTENER - CI		
PROJECT NUMBER: ...	DRAWING NUMBER: EFC105	SCALE: 6" = 1'-0"
DRAWING DESCRIPTION: SILL TERMINATION DETAIL		
DRAWN BY: ...	DATE: 7/27/22	



NOTE:
AIR/MOISTURE BARRIER
INSTALLER MUST PROVIDE
WEATHER TIGHT SEAL AT
ALL BARRIER TERMINATIONS

THE INFORMATION CONTAINED IN THIS DRAWING IS THE SOLE PROPERTY OF METAL DESIGN SYSTEMS INC. ANY REPRODUCTION, IN PART OR WHOLE, WITHOUT THE WRITTEN PERMISSION OF METAL DESIGN SYSTEMS INC. IS PROHIBITED.



METAL DESIGN SYSTEMS

103 Chamber Drive
Anamosa, IA 52205
Ph. (319) 362-7454

MATERIAL:

...

PROJECT:

FUNDERMAX EXPOSED FASTENER - CI

PROJECT NUMBER:

...

DRAWING NUMBER:

EFCI06

SCALE:

6" = 1'-0"

DRAWING DESCRIPTION:

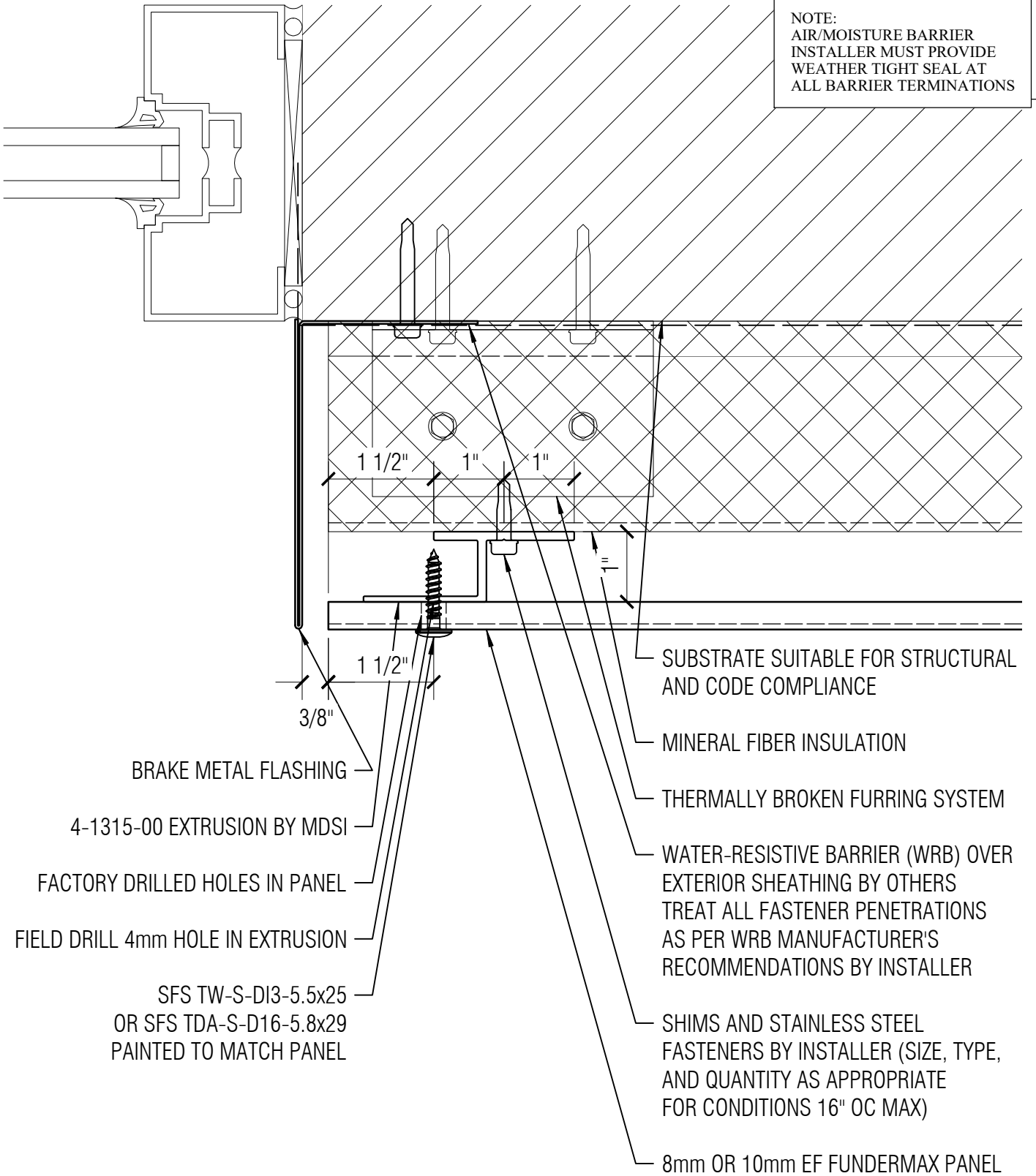
WINDOW HEAD TERMINATION DETAIL

DRAWN BY:

...

DATE:

7/27/22



NOTE:
AIR/MOISTURE BARRIER
INSTALLER MUST PROVIDE
WEATHER TIGHT SEAL AT
ALL BARRIER TERMINATIONS

THE INFORMATION CONTAINED IN THIS DRAWING IS THE SOLE PROPERTY OF METAL DESIGN SYSTEMS INC. ANY REPRODUCTION, IN PART OR WHOLE, WITHOUT THE WRITTEN PERMISSION OF METAL DESIGN SYSTEMS INC. IS PROHIBITED.



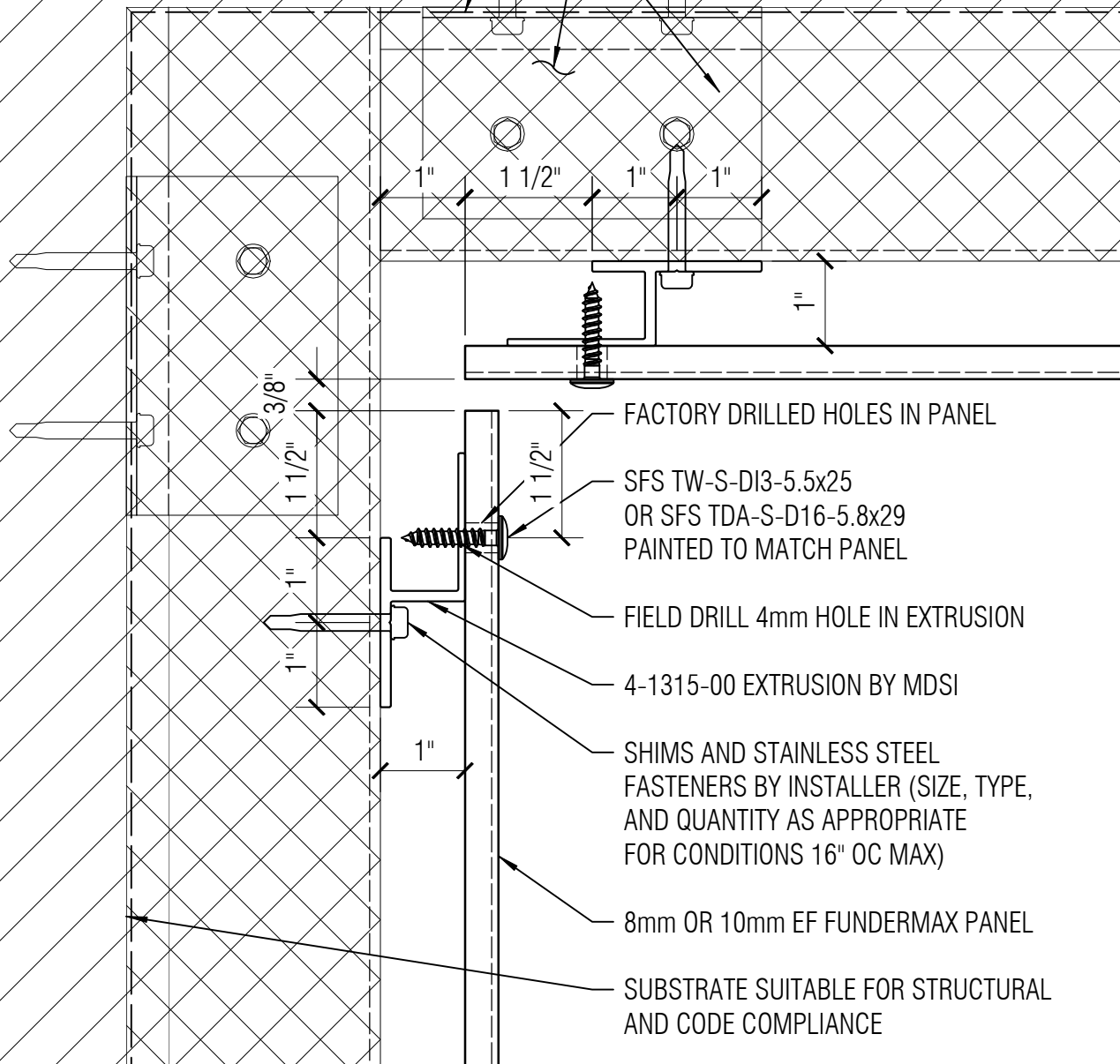
METAL DESIGN SYSTEMS
103 Chamber Drive
Anamosa, IA 52205
Ph. (319) 362-7454
MATERIAL:
...

PROJECT: FUNDERMAX EXPOSED FASTENER - CI		
PROJECT NUMBER: ...	DRAWING NUMBER: EFC107	SCALE: 6" = 1'-0"
DRAWING DESCRIPTION: WINDOW/DOOR JAMB DETAIL		
DRAWN BY: ...		DATE: 7/27/22

NOTE:
AIR/MOISTURE BARRIER
INSTALLER MUST PROVIDE
WEATHER TIGHT SEAL AT
ALL BARRIER TERMINATIONS

WATER-RESISTIVE BARRIER (WRB) OVER
EXTERIOR SHEATHING BY OTHERS
TREAT ALL FASTENER PENETRATIONS
AS PER WRB MANUFACTURER'S
RECOMMENDATIONS BY INSTALLER

MINERAL FIBER INSULATION
THERMALLY BROKEN FURRING SYSTEM



FACTORY DRILLED HOLES IN PANEL

SFS TW-S-DI3-5.5x25
OR SFS TDA-S-D16-5.8x29
PAINTED TO MATCH PANEL

FIELD DRILL 4mm HOLE IN EXTRUSION

4-1315-00 EXTRUSION BY MDSI

SHIMS AND STAINLESS STEEL
FASTENERS BY INSTALLER (SIZE, TYPE,
AND QUANTITY AS APPROPRIATE
FOR CONDITIONS 16" OC MAX)

8mm OR 10mm EF FUNDERMAX PANEL

SUBSTRATE SUITABLE FOR STRUCTURAL
AND CODE COMPLIANCE

THE INFORMATION CONTAINED IN THIS
DRAWING IS THE SOLE PROPERTY OF
METAL DESIGN SYSTEMS INC.
ANY REPRODUCTION, IN PART OR WHOLE,
WITHOUT THE WRITTEN PERMISSION OF
METAL DESIGN SYSTEMS INC. IS PROHIBITED.



METAL DESIGN SYSTEMS

103 Chamber Drive
Anamosa, IA 52205
Ph. (319) 362-7454

MATERIAL:
...

PROJECT:

FUNDERMAX EXPOSED FASTENER - CI

PROJECT NUMBER:
...

DRAWING NUMBER:
EFC108

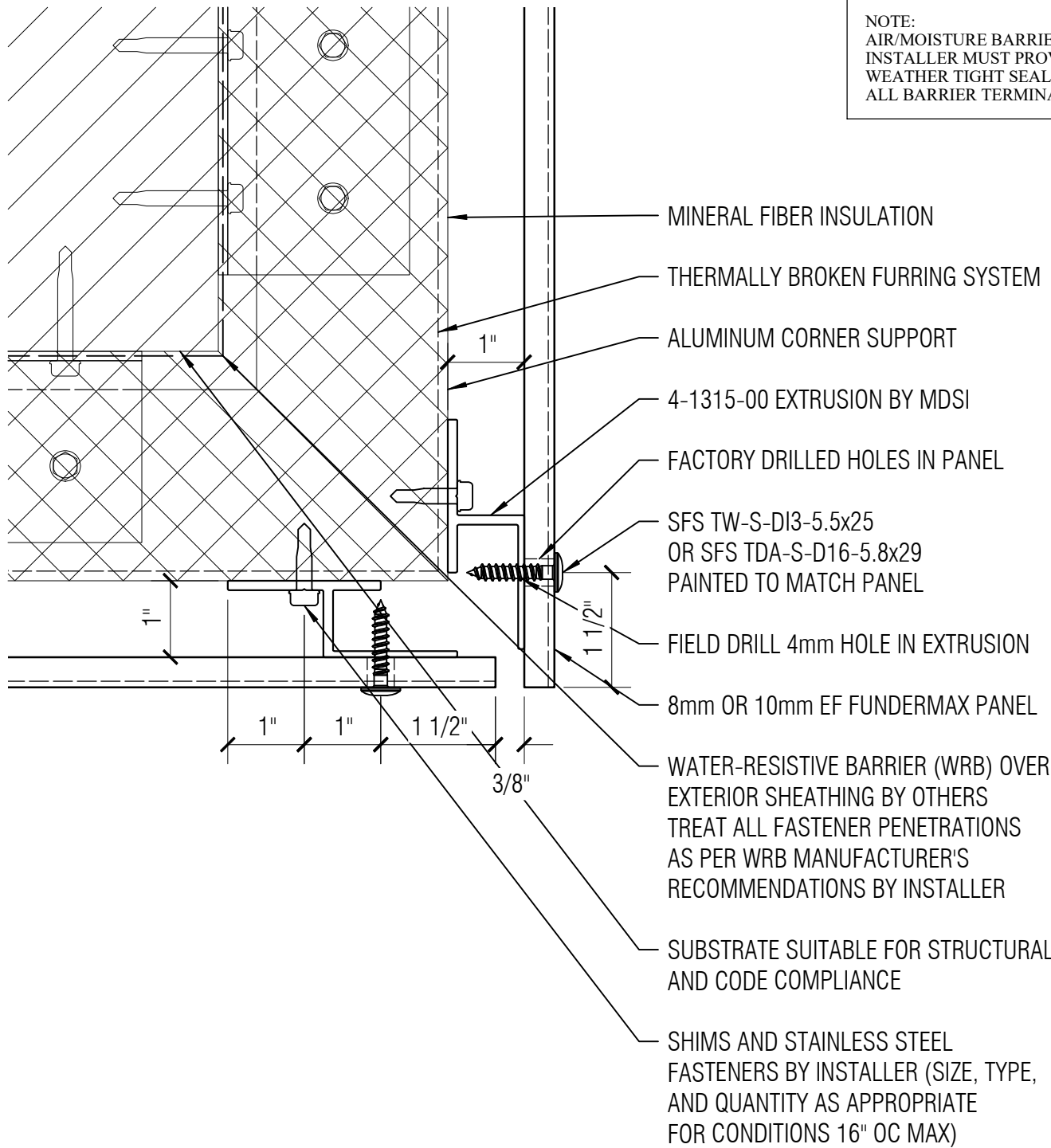
SCALE:
6" = 1'-0"

DRAWING DESCRIPTION:
INSIDE CORNER DETAIL

DRAWN BY:
...

DATE:
7/27/22

NOTE:
AIR/MOISTURE BARRIER
INSTALLER MUST PROVIDE
WEATHER TIGHT SEAL AT
ALL BARRIER TERMINATIONS



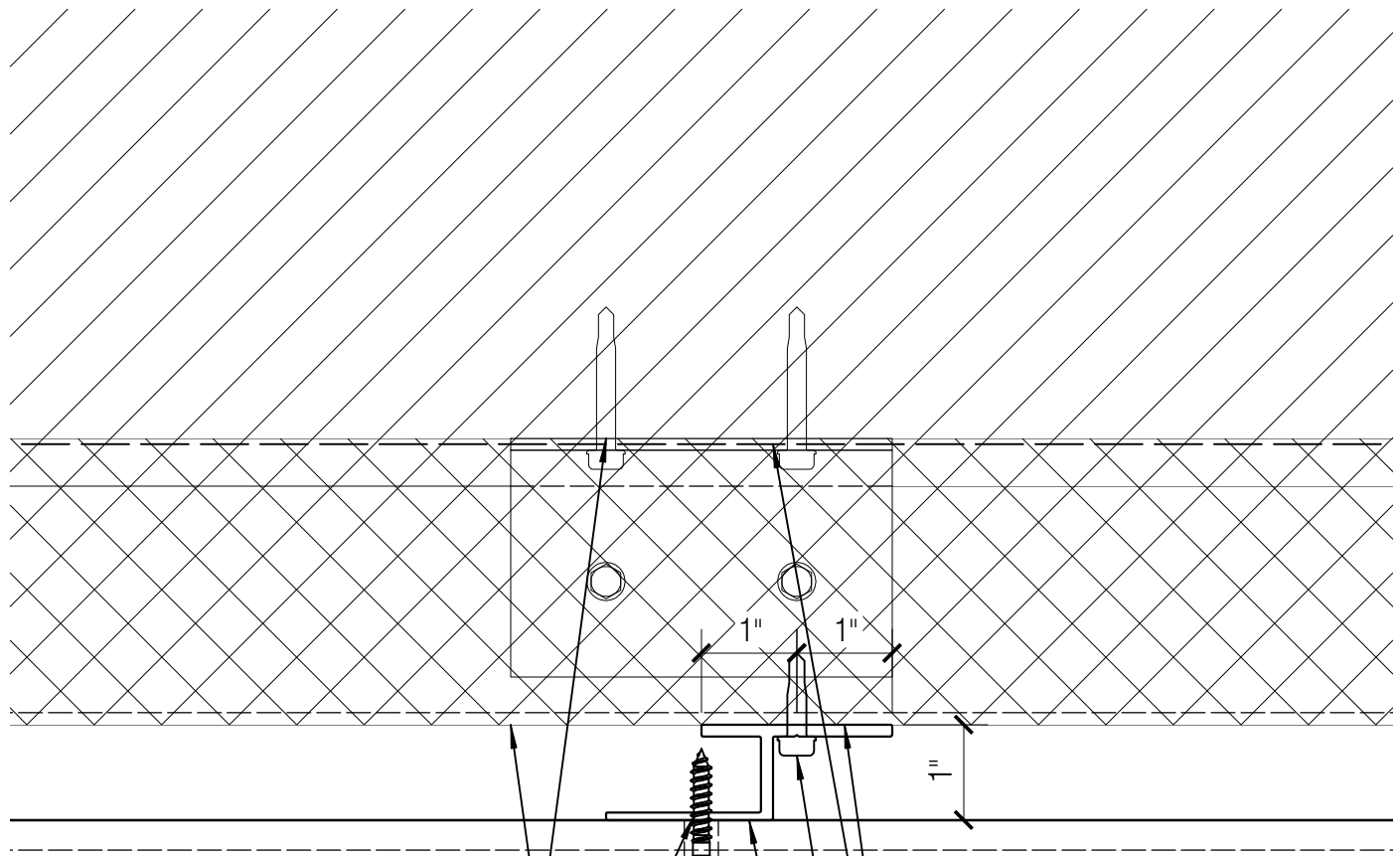
\\cmcsi.local\dfsroot2\Company\Shared_Folders\Tech\System_Info\Fundermax\System Details - Fundermax_3d.m page 34 of 46 printed 7/27/2022 9:27 last saved 7/27/2022 9:19

THE INFORMATION CONTAINED IN THIS DRAWING IS THE SOLE PROPERTY OF METAL DESIGN SYSTEMS INC. ANY REPRODUCTION, IN PART OR WHOLE, WITHOUT THE WRITTEN PERMISSION OF METAL DESIGN SYSTEMS INC. IS PROHIBITED.



METAL DESIGN SYSTEMS
103 Chamber Drive
Anamosa, IA 52205
Ph. (319) 362-7454

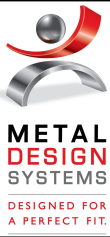
PROJECT: FUNDERMAX EXPOSED FASTENER - CI		
PROJECT NUMBER: ...	DRAWING NUMBER: EFC109	SCALE: 6" = 1'-0"
DRAWING DESCRIPTION: OUTSIDE CORNER DETAIL		
DRAWN BY: ...		DATE: 7/27/22



- MINERAL FIBER INSULATION
- SUBSTRATE SUITABLE FOR STRUCTURAL AND CODE COMPLIANCE
- 8mm OR 10mm EF FUNDERMAX PANEL
- FIELD DRILL 4mm HOLE IN EXTRUSION
- FACTORY DRILLED HOLE IN PANEL
- SFS TW-S-DI3-5.5x25 OR SFS TDA-S-D16-5.8x29 PAINTED TO MATCH PANEL
- THERMALLY BROKEN FURRING SYSTEM
- WATER-RESISTIVE BARRIER (WRB) OVER EXTERIOR SHEATHING BY OTHERS TREAT ALL FASTENER PENETRATIONS AS PER WRB MANUFACTURER'S RECOMMENDATIONS BY INSTALLER
- SHIMS AND STAINLESS STEEL FASTENERS BY INSTALLER (SIZE, TYPE, AND QUANTITY AS APPROPRIATE FOR CONDITIONS 16" OC MAX)
- 4-1315-00 EXTRUSION BY MDSI

NOTE:
 AIR/MOISTURE BARRIER
 INSTALLER MUST PROVIDE
 WEATHER TIGHT SEAL AT
 ALL BARRIER TERMINATIONS

THE INFORMATION CONTAINED IN THIS
 DRAWING IS THE SOLE PROPERTY OF
 METAL DESIGN SYSTEMS INC.
 ANY REPRODUCTION, IN PART OR WHOLE,
 WITHOUT THE WRITTEN PERMISSION OF
 METAL DESIGN SYSTEMS INC. IS PROHIBITED.



METAL DESIGN SYSTEMS
 103 Chamber Drive
 Anamosa, IA 52205
 Ph. (319) 362-7454
 MATERIAL:
 ...

PROJECT: FUNDERMAX EXPOSED FASTENER - CI		
PROJECT NUMBER: ...	DRAWING NUMBER: EFC10	SCALE: 6" = 1'-0"
DRAWING DESCRIPTION: INTERMEDIATE SUPPORT DETAIL		
DRAWN BY: ...	DATE: 7/27/22	