

# FUNDERMAX

---

## CONCEALED FASTENER STANDARD APPLICATION


---

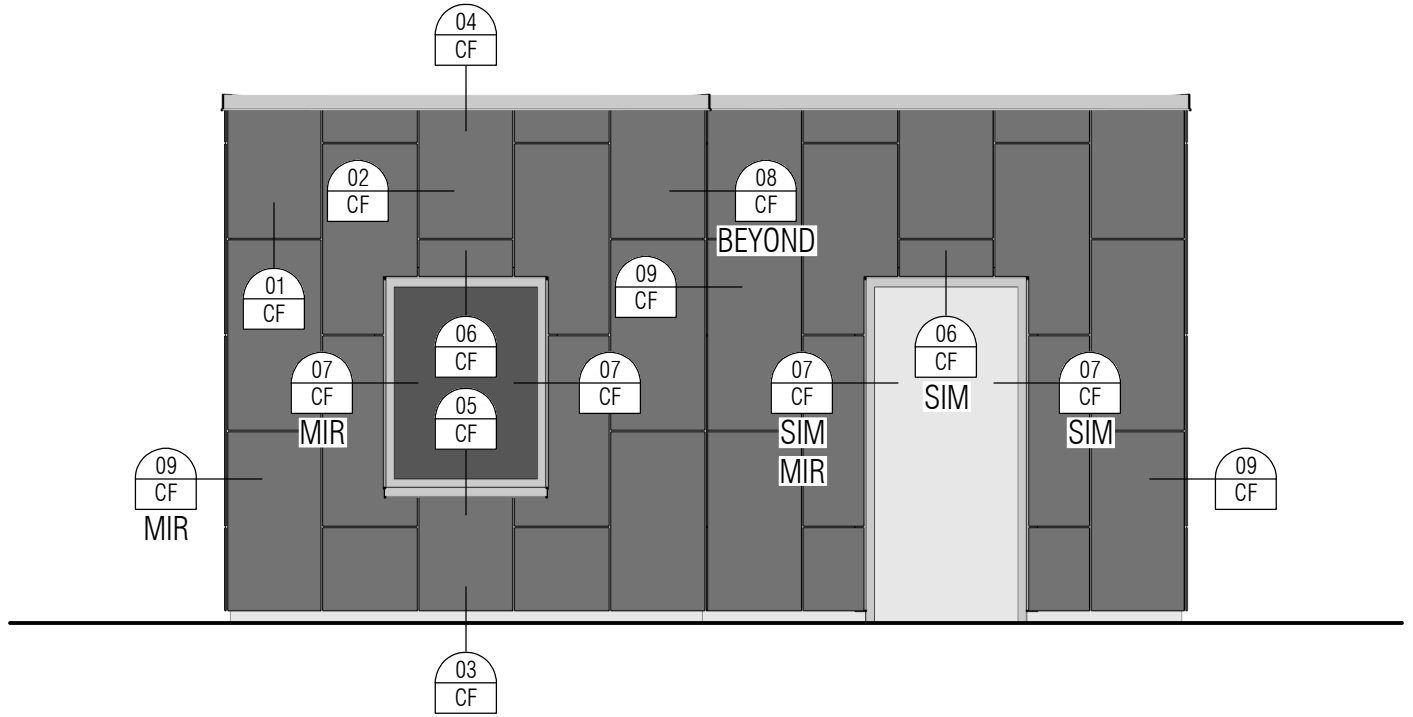
### DRAWING INDEX

---

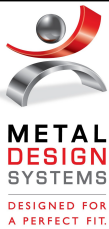
CF00	COVER SHEET
CFPA	DETAIL LAYOUT
CF01	HORIZONTAL JOINT DETAIL
CF02	VERTICAL JOINT DETAIL
CF03	GRADE TERMINATION DETAIL
CF04	COPING TERMINATION DETAIL
CF05	WINDOW SILL DETAIL
CF06	WINDOW HEAD DETAIL
CF07	WINDOW JAMB DETAIL
CF08	INSIDE CORNER DETAIL
CF09	OUTSIDE CORNER DETAIL

\\cmcsi.local\dfsroot2\Company\Company\_Shared\Folders\Tech\System\_Info\Fundermax\System\_Details - Fundermax.3dwm page 13 of 46 printed 7/27/2022 9:27 last saved 7/27/2022 9:19

<p style="font-size: small; margin: 0;">THE INFORMATION CONTAINED IN THIS DRAWING IS THE SOLE PROPERTY OF METAL DESIGN SYSTEMS INC. ANY REPRODUCTION, IN PART OR WHOLE, WITHOUT THE WRITTEN PERMISSION OF METAL DESIGN SYSTEMS INC. IS PROHIBITED.</p>	 <b>METAL DESIGN SYSTEMS</b> <small>DESIGNED FOR A PERFECT FIT.</small>	<b>METAL DESIGN SYSTEMS</b>	PROJECT: FUNDERMAX CONCEALED FASTENER		
		103 Chamber Drive Anamosa, IA 52205 Ph. (319) 362-7454	PROJECT NUMBER: ...	DRAWING NUMBER: CF00	SCALE: ...
		MATERIAL: ...	DRAWING DESCRIPTION: COVER SHEET		
			DRAWN BY: ...	DATE: 7/27/22	



THE INFORMATION CONTAINED IN THIS DRAWING IS THE SOLE PROPERTY OF METAL DESIGN SYSTEMS INC. ANY REPRODUCTION, IN PART OR WHOLE, WITHOUT THE WRITTEN PERMISSION OF METAL DESIGN SYSTEMS INC. IS PROHIBITED.



**METAL DESIGN SYSTEMS**

103 Chamber Drive  
Anamosa, IA 52205  
Ph. (319) 362-7454

MATERIAL:  
...

PROJECT:  
FUNDERMAX CONCEALED FASTENER

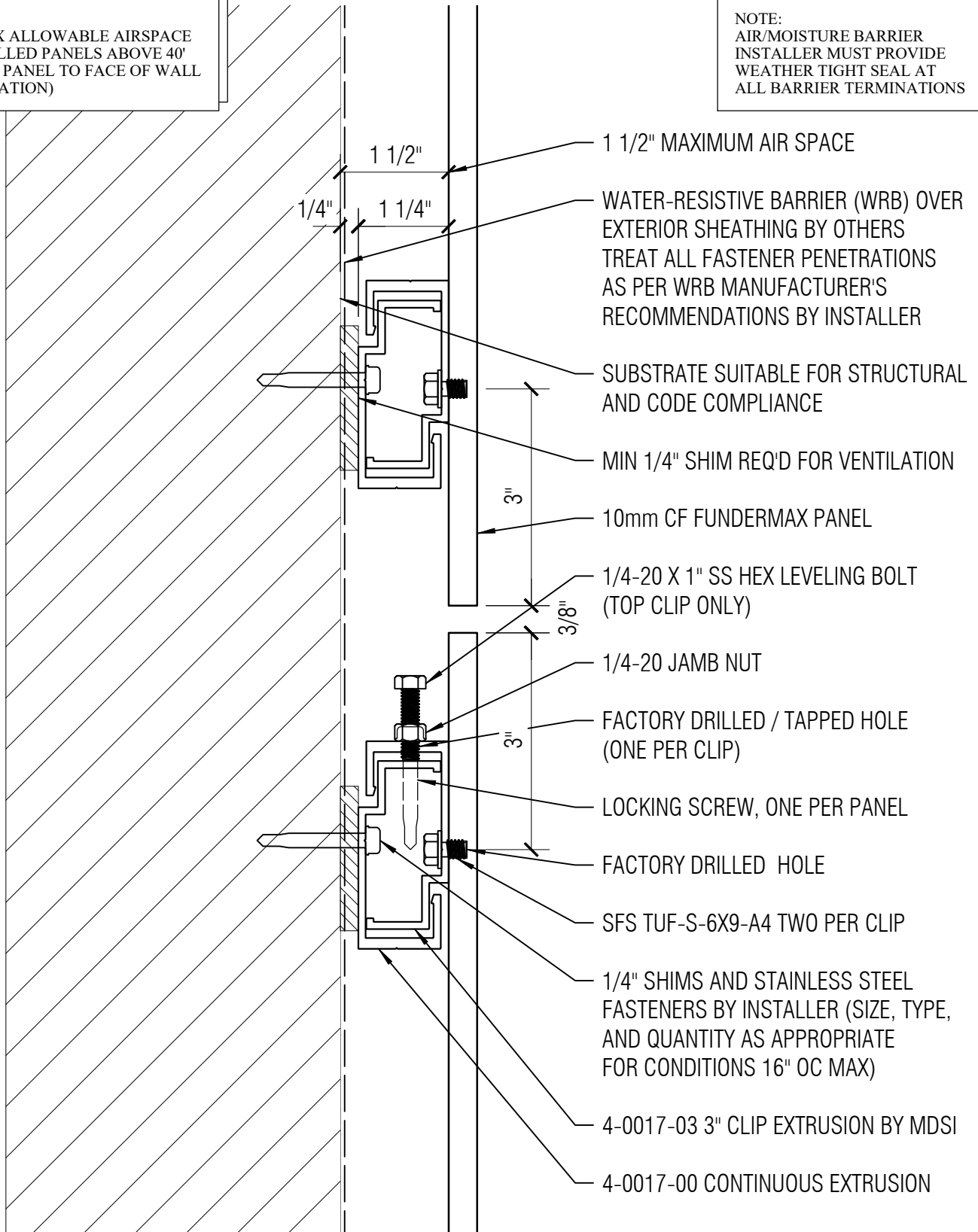
PROJECT NUMBER: ...	DRAWING NUMBER: CFPA	SCALE: NTS
------------------------	-------------------------	---------------

DRAWING DESCRIPTION:  
DETAIL LAYOUT

DRAWN BY: ...	DATE: 7/27/22
------------------	------------------

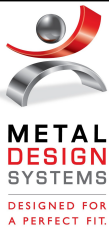
NOTE:  
1 1/2" MAX ALLOWABLE AIRSPACE  
OF INSTALLED PANELS ABOVE 40'  
(BACK OF PANEL TO FACE OF WALL  
OR INSULATION)

NOTE:  
AIR/MOISTURE BARRIER  
INSTALLER MUST PROVIDE  
WEATHER TIGHT SEAL AT  
ALL BARRIER TERMINATIONS



\\cmcsi.local\dfsroot2\Company\_Shared\_Folders\Tech\System\_Info\Fundermax\System\_Details - Fundermax\_3d.m page 15 of 46 printed 7/27/2022 9:27 last saved 7/27/2022 9:19

THE INFORMATION CONTAINED IN THIS  
DRAWING IS THE SOLE PROPERTY OF  
METAL DESIGN SYSTEMS INC.  
ANY REPRODUCTION, IN PART OR WHOLE,  
WITHOUT THE WRITTEN PERMISSION OF  
METAL DESIGN SYSTEMS INC. IS PROHIBITED.



**METAL DESIGN SYSTEMS**

103 Chamber Drive  
Anamosa, IA 52205  
Ph. (319) 362-7454

MATERIAL:  
...

PROJECT:

FUNDERMAX CONCEALED FASTENER

PROJECT NUMBER:

...

DRAWING NUMBER:

CF01

SCALE:

6" = 1'-0"

DRAWING DESCRIPTION:

HORIZONTAL JOINT DETAIL

DRAWN BY:

...

DATE:

7/27/22

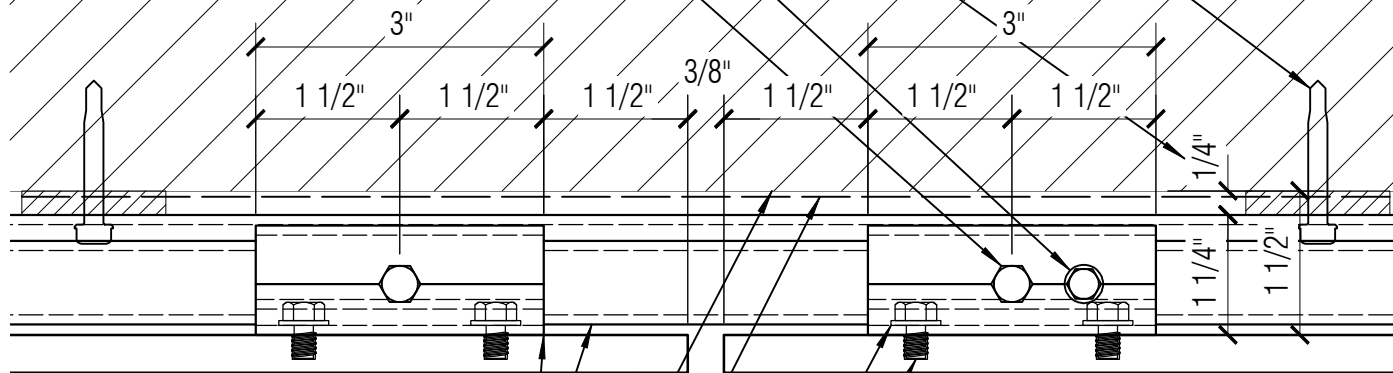
NOTE:  
AIR/MOISTURE BARRIER  
INSTALLER MUST PROVIDE  
WEATHER TIGHT SEAL AT  
ALL BARRIER TERMINATIONS

1/4" SHIMS AND STAINLESS STEEL  
FASTENERS BY INSTALLER (SIZE, TYPE,  
AND QUANTITY AS APPROPRIATE  
FOR CONDITIONS 16" OC MAX)

REQUIRED VENTILATION GAP

LOCKING SCREW ONE PER PANEL

1/4-20 X 1" SS HEX LEVELING BOLT (TOP  
CLIP ONLY) WITH 1/4-20 JAMB NUT  
THROUGH FACTORY DRILLED/  
TAPPED HOLE IN CLIP (1 PER CLIP)



4-0017-03 3" CLIP EXTRUSION BY MDSI

4-0017-00 CONTINUOUS EXTRUSION

10mm CF FUNDERMAX PANEL

SUBSTRATE SUITABLE FOR STRUCTURAL  
AND CODE COMPLIANCE

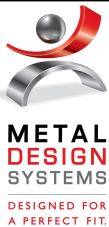
WATER-RESISTIVE BARRIER (WRB) OVER  
EXTERIOR SHEATHING BY OTHERS  
TREAT ALL FASTENER PENETRATIONS  
AS PER WRB MANUFACTURER'S  
RECOMMENDATIONS BY INSTALLER

SFS TUF-S-6X9-A4 TWO PER CLIP

FACTORY DRILLED HOLE

NOTE:  
1 1/2" MAX ALLOWABLE AIRSPACE  
OF INSTALLED PANELS ABOVE 40'  
(BACK OF PANEL TO FACE OF WALL  
OR INSULATION)

THE INFORMATION CONTAINED IN THIS  
DRAWING IS THE SOLE PROPERTY OF  
METAL DESIGN SYSTEMS INC.  
ANY REPRODUCTION, IN PART OR WHOLE,  
WITHOUT THE WRITTEN PERMISSION OF  
METAL DESIGN SYSTEMS INC. IS PROHIBITED.



**METAL DESIGN SYSTEMS**

103 Chamber Drive  
Anamosa, IA 52205  
Ph. (319) 362-7454

MATERIAL:

...

PROJECT:

FUNDERMAX CONCEALED FASTENER

PROJECT NUMBER:

...

DRAWING NUMBER:

CF02

SCALE:

6" = 1'-0"

DRAWING DESCRIPTION:

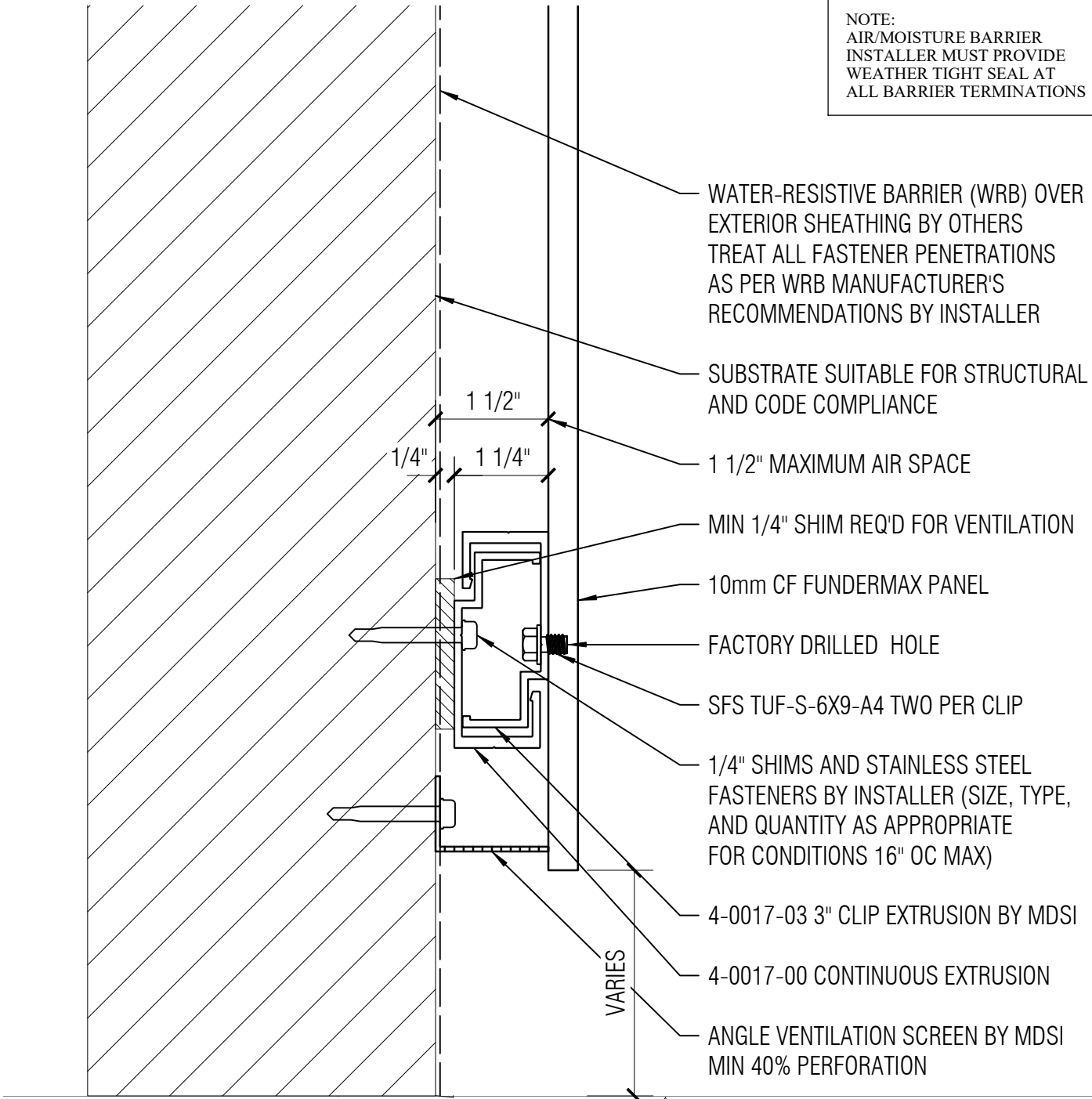
VERTICAL JOINT DETAIL

DRAWN BY:

...

DATE:

7/27/22



NOTE:  
 AIR/MOISTURE BARRIER  
 INSTALLER MUST PROVIDE  
 WEATHER TIGHT SEAL AT  
 ALL BARRIER TERMINATIONS

- WATER-RESISTIVE BARRIER (WRB) OVER EXTERIOR SHEATHING BY OTHERS TREAT ALL FASTENER PENETRATIONS AS PER WRB MANUFACTURER'S RECOMMENDATIONS BY INSTALLER
- SUBSTRATE SUITABLE FOR STRUCTURAL AND CODE COMPLIANCE
- 1 1/2" MAXIMUM AIR SPACE
- MIN 1/4" SHIM REQ'D FOR VENTILATION
- 10mm CF FUNDERMAX PANEL
- FACTORY DRILLED HOLE
- SFS TUF-S-6X9-A4 TWO PER CLIP
- 1/4" SHIMS AND STAINLESS STEEL FASTENERS BY INSTALLER (SIZE, TYPE, AND QUANTITY AS APPROPRIATE FOR CONDITIONS 16" OC MAX)
- 4-0017-03 3" CLIP EXTRUSION BY MDSI
- 4-0017-00 CONTINUOUS EXTRUSION
- ANGLE VENTILATION SCREEN BY MDSI MIN 40% PERFORATION

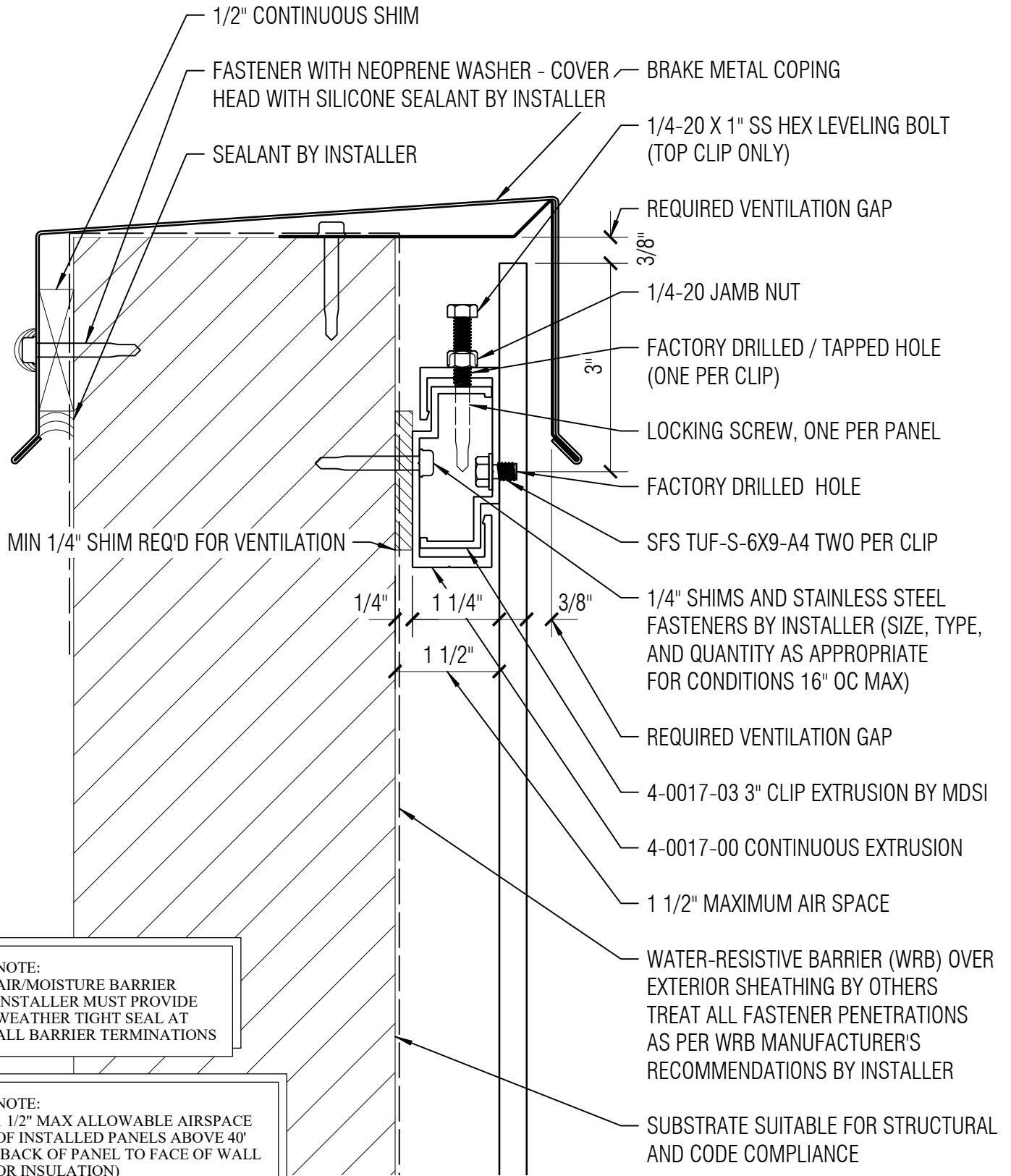
NOTE:  
 1 1/2" MAX ALLOWABLE AIRSPACE OF INSTALLED PANELS ABOVE 40' (BACK OF PANEL TO FACE OF WALL OR INSULATION)

THE INFORMATION CONTAINED IN THIS DRAWING IS THE SOLE PROPERTY OF METAL DESIGN SYSTEMS INC. ANY REPRODUCTION, IN PART OR WHOLE, WITHOUT THE WRITTEN PERMISSION OF METAL DESIGN SYSTEMS INC. IS PROHIBITED.



**METAL DESIGN SYSTEMS**  
 103 Chamber Drive  
 Anamosa, IA 52205  
 Ph. (319) 362-7454  
 MATERIAL: ...

PROJECT: FUNDERMAX CONCEALED FASTENER		
PROJECT NUMBER: ...	DRAWING NUMBER: CF03	SCALE: 6" = 1'-0"
DRAWING DESCRIPTION: GRADE TERMINATION DETAIL		
DRAWN BY: ...		DATE: 7/27/22



**NOTE:**  
AIR/MOISTURE BARRIER  
INSTALLER MUST PROVIDE  
WEATHER TIGHT SEAL AT  
ALL BARRIER TERMINATIONS

**NOTE:**  
1 1/2" MAX ALLOWABLE AIRSPACE  
OF INSTALLED PANELS ABOVE 40'  
(BACK OF PANEL TO FACE OF WALL  
OR INSULATION)

THE INFORMATION CONTAINED IN THIS DRAWING IS THE SOLE PROPERTY OF METAL DESIGN SYSTEMS INC. ANY REPRODUCTION, IN PART OR WHOLE, WITHOUT THE WRITTEN PERMISSION OF METAL DESIGN SYSTEMS INC. IS PROHIBITED.

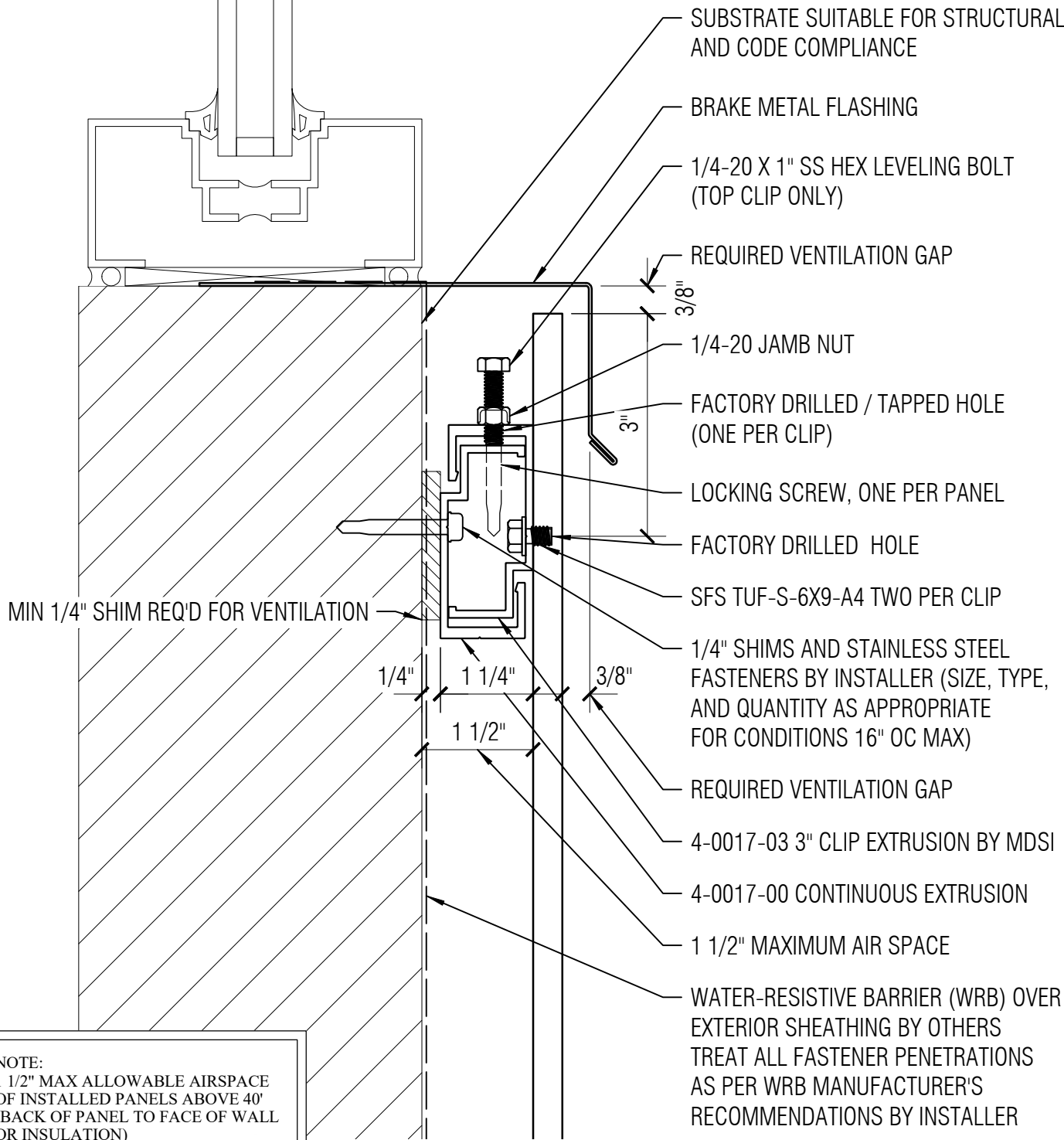


**METAL DESIGN SYSTEMS**  
103 Chamber Drive  
Anamosa, IA 52205  
Ph. (319) 362-7454

MATERIAL:  
...

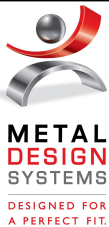
PROJECT: FUNDERMAX CONCEALED FASTENER		
PROJECT NUMBER: ...	DRAWING NUMBER: CF04	SCALE: 6" = 1'-0"
DRAWING DESCRIPTION: COPING TERMINATION DETAIL		
DRAWN BY: ...		DATE: 7/27/22

NOTE:  
AIR/MOISTURE BARRIER  
INSTALLER MUST PROVIDE  
WEATHER TIGHT SEAL AT  
ALL BARRIER TERMINATIONS



NOTE:  
1 1/2" MAX ALLOWABLE AIRSPACE  
OF INSTALLED PANELS ABOVE 40'  
(BACK OF PANEL TO FACE OF WALL  
OR INSULATION)

THE INFORMATION CONTAINED IN THIS  
DRAWING IS THE SOLE PROPERTY OF  
METAL DESIGN SYSTEMS INC.  
ANY REPRODUCTION, IN PART OR WHOLE,  
WITHOUT THE WRITTEN PERMISSION OF  
METAL DESIGN SYSTEMS INC. IS PROHIBITED.



**METAL DESIGN SYSTEMS**

103 Chamber Drive  
Anamosa, IA 52205  
Ph. (319) 362-7454

MATERIAL:  
...

PROJECT:

FUNDERMAX CONCEALED FASTENER

PROJECT NUMBER:

...

DRAWING NUMBER:

CF05

SCALE:

6" = 1'-0"

DRAWING DESCRIPTION:

WINDOW SILL TERMINATION DETAIL

DRAWN BY:

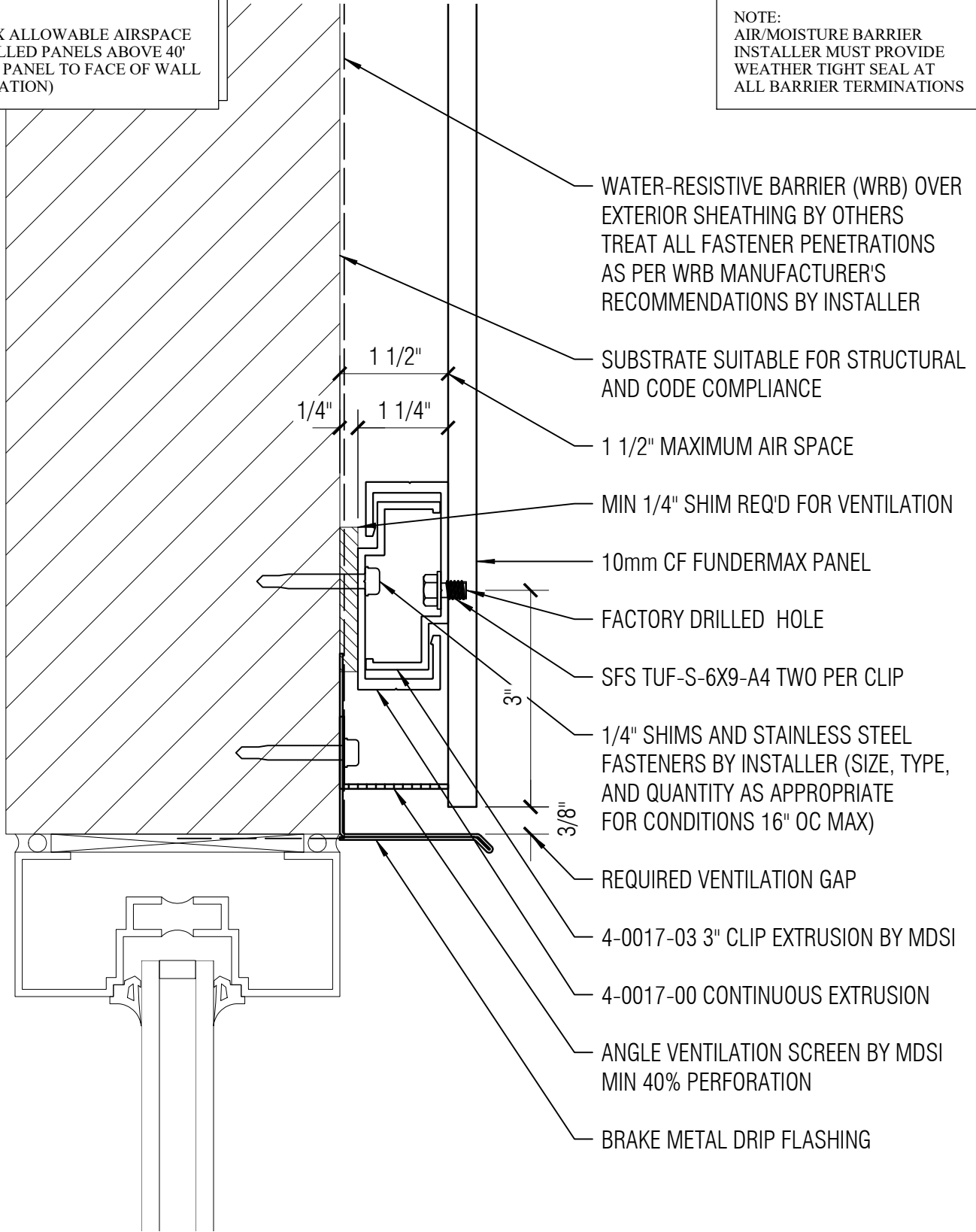
...

DATE:

7/27/22

NOTE:  
1 1/2" MAX ALLOWABLE AIRSPACE  
OF INSTALLED PANELS ABOVE 40'  
(BACK OF PANEL TO FACE OF WALL  
OR INSULATION)

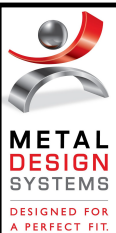
NOTE:  
AIR/MOISTURE BARRIER  
INSTALLER MUST PROVIDE  
WEATHER TIGHT SEAL AT  
ALL BARRIER TERMINATIONS



- WATER-RESISTIVE BARRIER (WRB) OVER EXTERIOR SHEATHING BY OTHERS TREAT ALL FASTENER PENETRATIONS AS PER WRB MANUFACTURER'S RECOMMENDATIONS BY INSTALLER
- SUBSTRATE SUITABLE FOR STRUCTURAL AND CODE COMPLIANCE
- 1 1/2" MAXIMUM AIR SPACE
- MIN 1/4" SHIM REQ'D FOR VENTILATION
- 10mm CF FUNDERMAX PANEL
- FACTORY DRILLED HOLE
- SFS TUF-S-6X9-A4 TWO PER CLIP
- 1/4" SHIMS AND STAINLESS STEEL FASTENERS BY INSTALLER (SIZE, TYPE, AND QUANTITY AS APPROPRIATE FOR CONDITIONS 16" OC MAX)
- REQUIRED VENTILATION GAP
- 4-0017-03 3" CLIP EXTRUSION BY MDSI
- 4-0017-00 CONTINUOUS EXTRUSION
- ANGLE VENTILATION SCREEN BY MDSI MIN 40% PERFORATION
- BRAKE METAL DRIP FLASHING

\\cmcsi.local\dfsroot2\Company\Shared\_Folders\Tech\System\_Info\Fundermax\System Details - Fundermax\_3d.m page 20 of 46 printed 7/27/2022 9:27 last saved 7/27/2022 9:19

THE INFORMATION CONTAINED IN THIS DRAWING IS THE SOLE PROPERTY OF METAL DESIGN SYSTEMS INC. ANY REPRODUCTION, IN PART OR WHOLE, WITHOUT THE WRITTEN PERMISSION OF METAL DESIGN SYSTEMS INC. IS PROHIBITED.

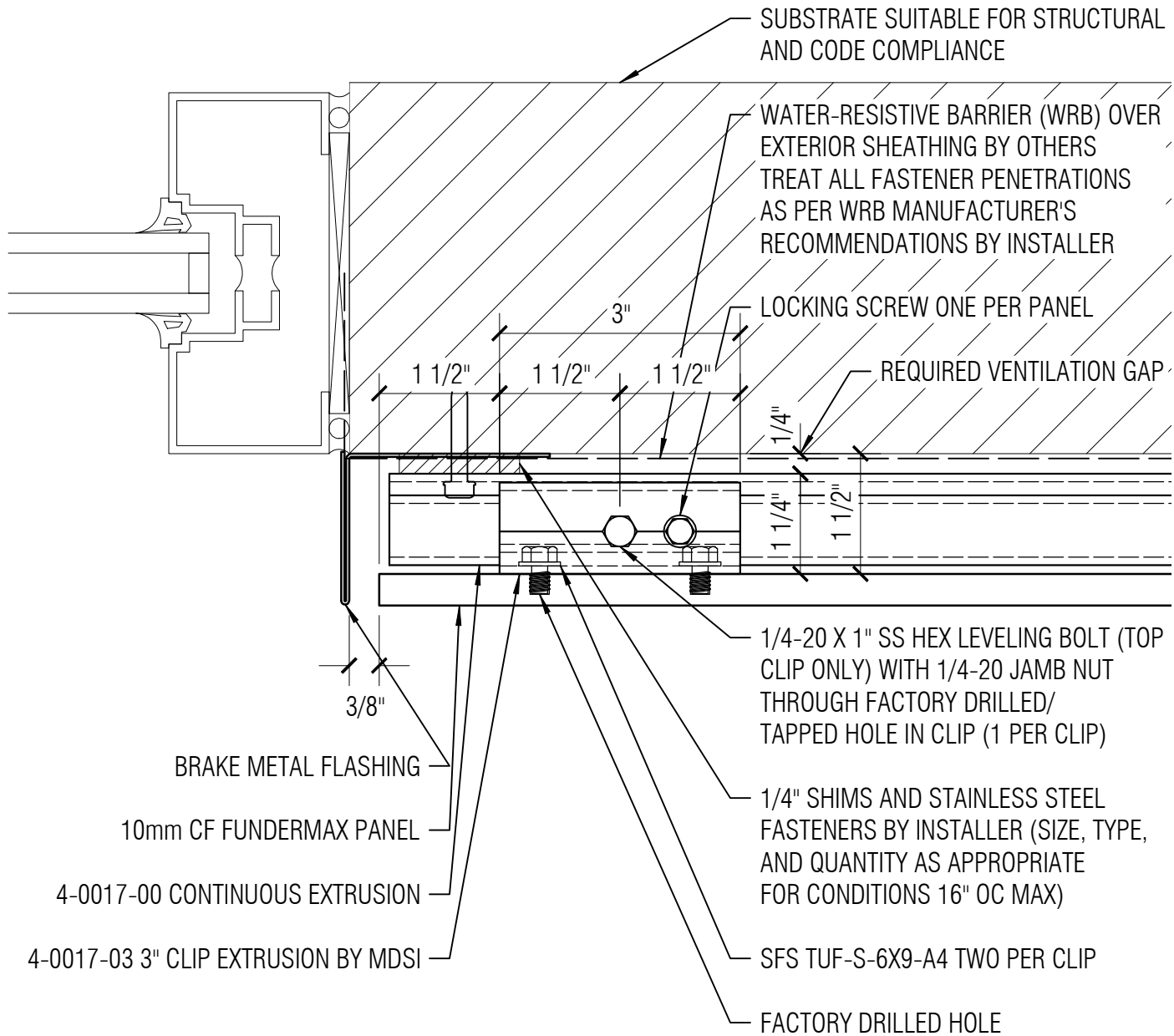


**METAL DESIGN SYSTEMS**  
103 Chamber Drive  
Anamosa, IA 52205  
Ph. (319) 362-7454  
MATERIAL:  
...

PROJECT: FUNDERMAX CONCEALED FASTENER		
PROJECT NUMBER: ...	DRAWING NUMBER: CF06	SCALE: 6" = 1'-0"
DRAWING DESCRIPTION: WINDOW HEAD TERMINATION DETAIL		
DRAWN BY: ...	DATE: 7/27/22	

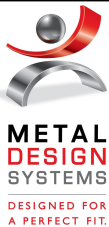


NOTE:  
AIR/MOISTURE BARRIER  
INSTALLER MUST PROVIDE  
WEATHER TIGHT SEAL AT  
ALL BARRIER TERMINATIONS



NOTE:  
1 1/2" MAX ALLOWABLE AIRSPACE  
OF INSTALLED PANELS ABOVE 40'  
(BACK OF PANEL TO FACE OF WALL  
OR INSULATION)

THE INFORMATION CONTAINED IN THIS DRAWING IS THE SOLE PROPERTY OF METAL DESIGN SYSTEMS INC. ANY REPRODUCTION, IN PART OR WHOLE, WITHOUT THE WRITTEN PERMISSION OF METAL DESIGN SYSTEMS INC. IS PROHIBITED.



METAL DESIGN SYSTEMS

103 Chamber Drive  
Anamosa, IA 52205  
Ph. (319) 362-7454

MATERIAL:  
...

PROJECT:

FUNDERMAX CONCEALED FASTENER

PROJECT NUMBER:

...

DRAWING NUMBER:

CF07

SCALE:

6" = 1'-0"

DRAWING DESCRIPTION:

WINDOW JAMB TERMINATION DETAIL

DRAWN BY:

...

DATE:

7/27/22

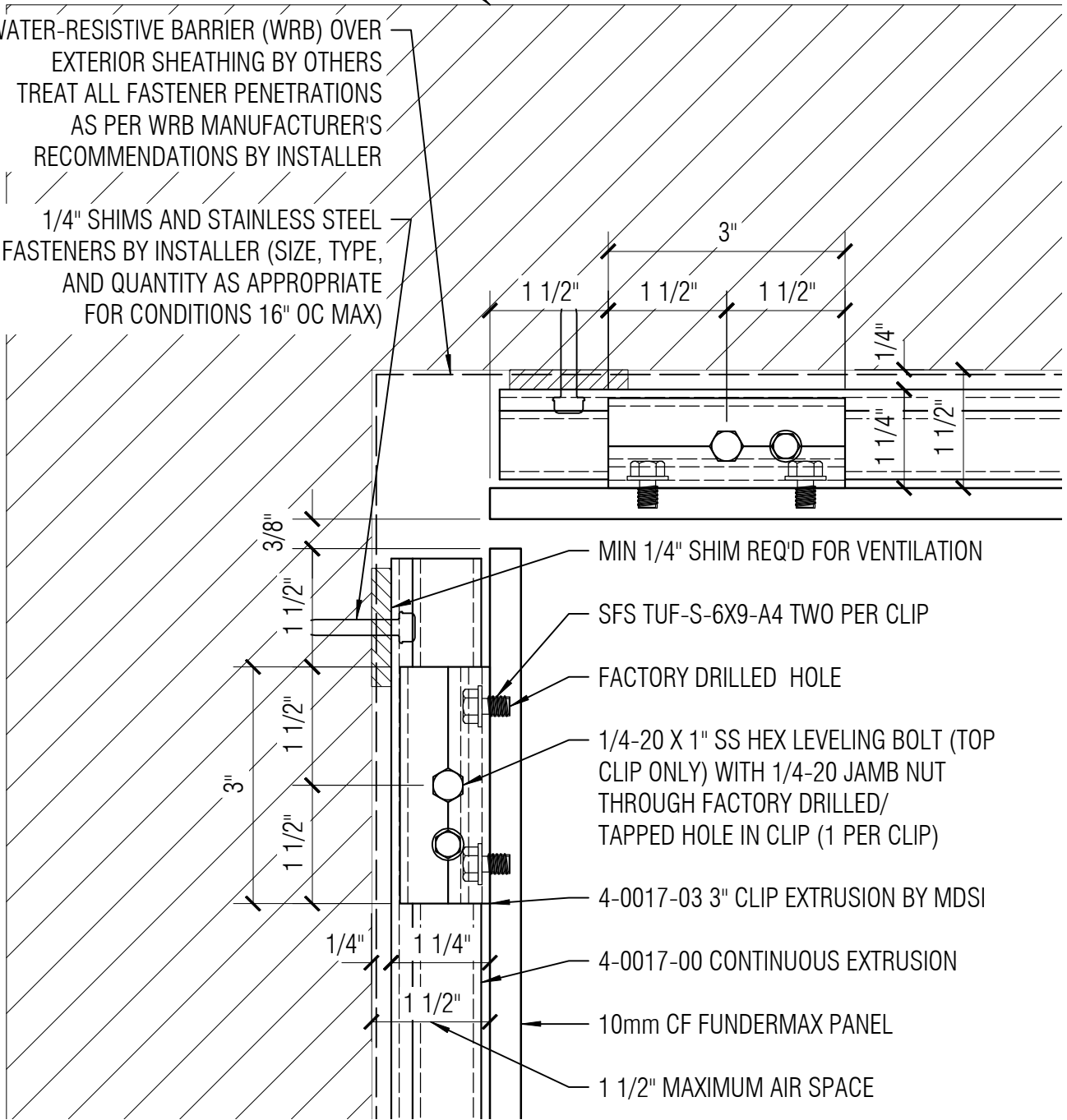
NOTE:  
 1 1/2" MAX ALLOWABLE AIRSPACE  
 OF INSTALLED PANELS ABOVE 40'  
 (BACK OF PANEL TO FACE OF WALL  
 OR INSULATION)

NOTE:  
 AIR/MOISTURE BARRIER  
 INSTALLER MUST PROVIDE  
 WEATHER TIGHT SEAL AT  
 ALL BARRIER TERMINATIONS

SUBSTRATE SUITABLE FOR STRUCTURAL  
 AND CODE COMPLIANCE

WATER-RESISTIVE BARRIER (WRB) OVER  
 EXTERIOR SHEATHING BY OTHERS  
 TREAT ALL FASTENER PENETRATIONS  
 AS PER WRB MANUFACTURER'S  
 RECOMMENDATIONS BY INSTALLER

1/4" SHIMS AND STAINLESS STEEL  
 FASTENERS BY INSTALLER (SIZE, TYPE,  
 AND QUANTITY AS APPROPRIATE  
 FOR CONDITIONS 16" OC MAX)



MIN 1/4" SHIM REQ'D FOR VENTILATION

SFS TUF-S-6X9-A4 TWO PER CLIP

FACTORY DRILLED HOLE

1/4-20 X 1" SS HEX LEVELING BOLT (TOP  
 CLIP ONLY) WITH 1/4-20 JAMB NUT  
 THROUGH FACTORY DRILLED/  
 TAPPED HOLE IN CLIP (1 PER CLIP)

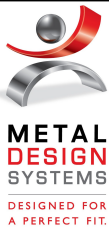
4-0017-03 3" CLIP EXTRUSION BY MDSI

4-0017-00 CONTINUOUS EXTRUSION

10mm CF FUNDERMAX PANEL

1 1/2" MAXIMUM AIR SPACE

THE INFORMATION CONTAINED IN THIS  
 DRAWING IS THE SOLE PROPERTY OF  
 METAL DESIGN SYSTEMS INC.  
 ANY REPRODUCTION, IN PART OR WHOLE,  
 WITHOUT THE WRITTEN PERMISSION OF  
 METAL DESIGN SYSTEMS INC. IS PROHIBITED.



**METAL DESIGN SYSTEMS**

103 Chamber Drive  
 Anamosa, IA 52205  
 Ph. (319) 362-7454

MATERIAL:  
 ...

PROJECT:

FUNDERMAX CONCEALED FASTENER

PROJECT NUMBER:  
 ...

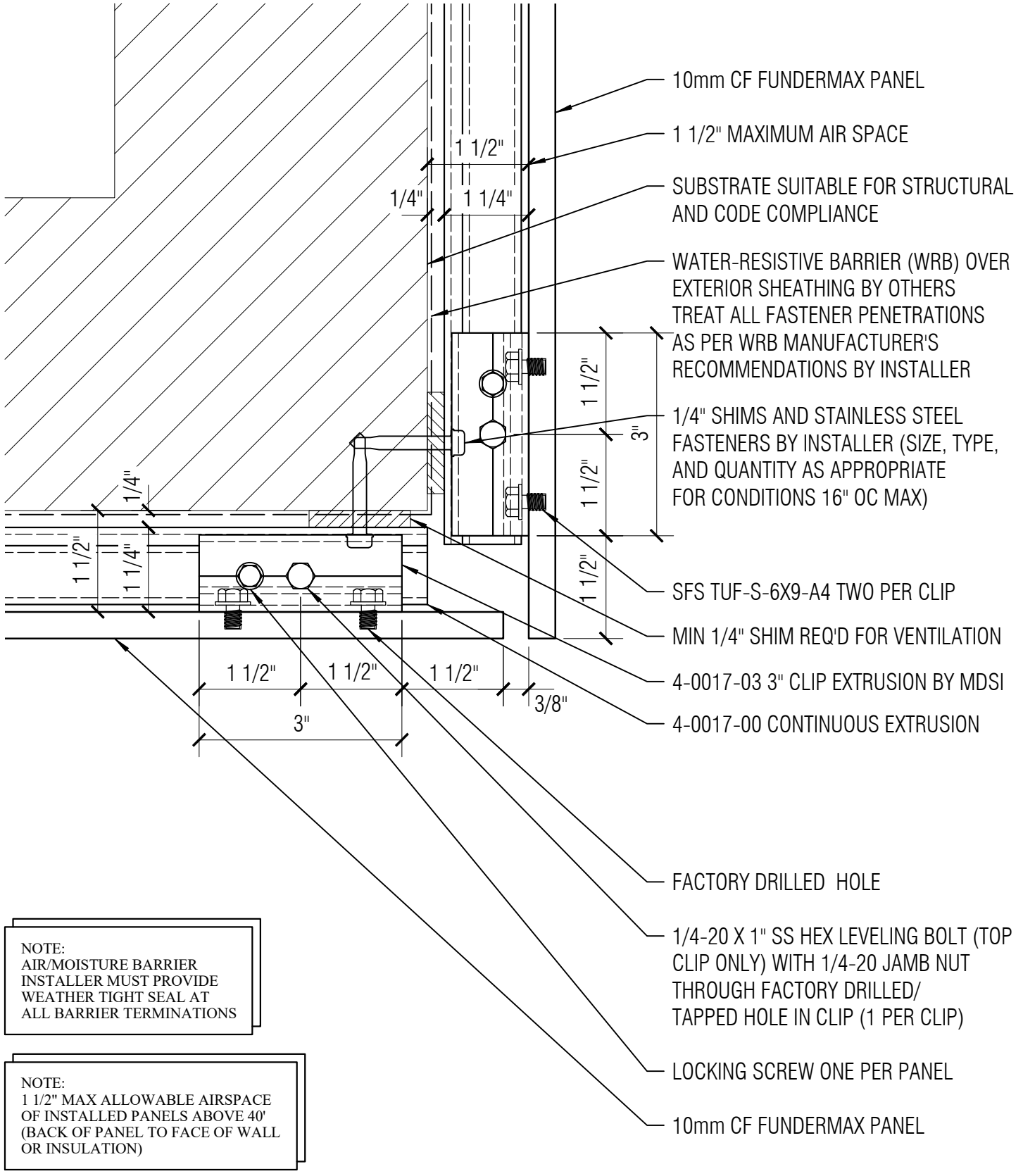
DRAWING NUMBER:  
 CF08

SCALE:  
 6" = 1'-0"

DRAWING DESCRIPTION:  
 INSIDE CORNER DETAIL

DRAWN BY:  
 ...

DATE:  
 7/27/22



- 10mm CF FUNDERMAX PANEL
- 1 1/2" MAXIMUM AIR SPACE
- SUBSTRATE SUITABLE FOR STRUCTURAL AND CODE COMPLIANCE
- WATER-RESISTIVE BARRIER (WRB) OVER EXTERIOR SHEATHING BY OTHERS TREAT ALL FASTENER PENETRATIONS AS PER WRB MANUFACTURER'S RECOMMENDATIONS BY INSTALLER
- 1/4" SHIMS AND STAINLESS STEEL FASTENERS BY INSTALLER (SIZE, TYPE, AND QUANTITY AS APPROPRIATE FOR CONDITIONS 16" OC MAX)
- SFS TUF-S-6X9-A4 TWO PER CLIP
- MIN 1/4" SHIM REQ'D FOR VENTILATION
- 4-0017-03 3" CLIP EXTRUSION BY MDSI
- 4-0017-00 CONTINUOUS EXTRUSION
- FACTORY DRILLED HOLE
- 1/4-20 X 1" SS HEX LEVELING BOLT (TOP CLIP ONLY) WITH 1/4-20 JAMB NUT THROUGH FACTORY DRILLED/TAPPED HOLE IN CLIP (1 PER CLIP)
- LOCKING SCREW ONE PER PANEL
- 10mm CF FUNDERMAX PANEL

**NOTE:**  
AIR/MOISTURE BARRIER  
INSTALLER MUST PROVIDE  
WEATHER TIGHT SEAL AT  
ALL BARRIER TERMINATIONS

**NOTE:**  
1 1/2" MAX ALLOWABLE AIRSPACE  
OF INSTALLED PANELS ABOVE 40'  
(BACK OF PANEL TO FACE OF WALL  
OR INSULATION)

THE INFORMATION CONTAINED IN THIS DRAWING IS THE SOLE PROPERTY OF METAL DESIGN SYSTEMS INC. ANY REPRODUCTION, IN PART OR WHOLE, WITHOUT THE WRITTEN PERMISSION OF METAL DESIGN SYSTEMS INC. IS PROHIBITED.



**METAL DESIGN SYSTEMS**  
103 Chamber Drive  
Anamosa, IA 52205  
Ph. (319) 362-7454  
MATERIAL:  
...

PROJECT: FUNDERMAX CONCEALED FASTENER		
PROJECT NUMBER: ...	DRAWING NUMBER: CF09	SCALE: 6" = 1'-0"
DRAWING DESCRIPTION: OUTSIDE CORNER DETAIL		
DRAWN BY: ...		DATE: 7/20/23

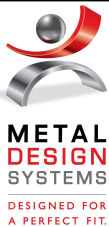
# FUNDERMAX

## CONCEALED FASTENER WITH CONTINUOUS INSULATION STANDARD APPLICATION

### DRAWING INDEX

CFCI00	COVER SHEET
CFCIPA	DETAIL LAYOUT
CFCI01	HORIZONTAL JOINT DETAIL
CFCI02	VERTICAL JOINT DETAIL
CFCI03	GRADE TERMINATION DETAIL
CFCI04	COPING TERMINATION DETAIL
CFCI05	WINDOW SILL DETAIL
CFCI06	WINDOW HEAD DETAIL
CFCI07	WINDOW JAMB DETAIL
CFCI08	INSIDE CORNER DETAIL
CFCI09	OUTSIDE CORNER DETAIL

THE INFORMATION CONTAINED IN THIS DRAWING IS THE SOLE PROPERTY OF METAL DESIGN SYSTEMS INC. ANY REPRODUCTION, IN PART OR WHOLE, WITHOUT THE WRITTEN PERMISSION OF METAL DESIGN SYSTEMS INC. IS PROHIBITED.



**METAL DESIGN SYSTEMS**

103 Chamber Drive  
Anamosa, IA 52205  
Ph. (319) 362-7454

MATERIAL:  
...

PROJECT:

FUNDERMAX CONCEALED FASTENER - CI

PROJECT NUMBER:  
...

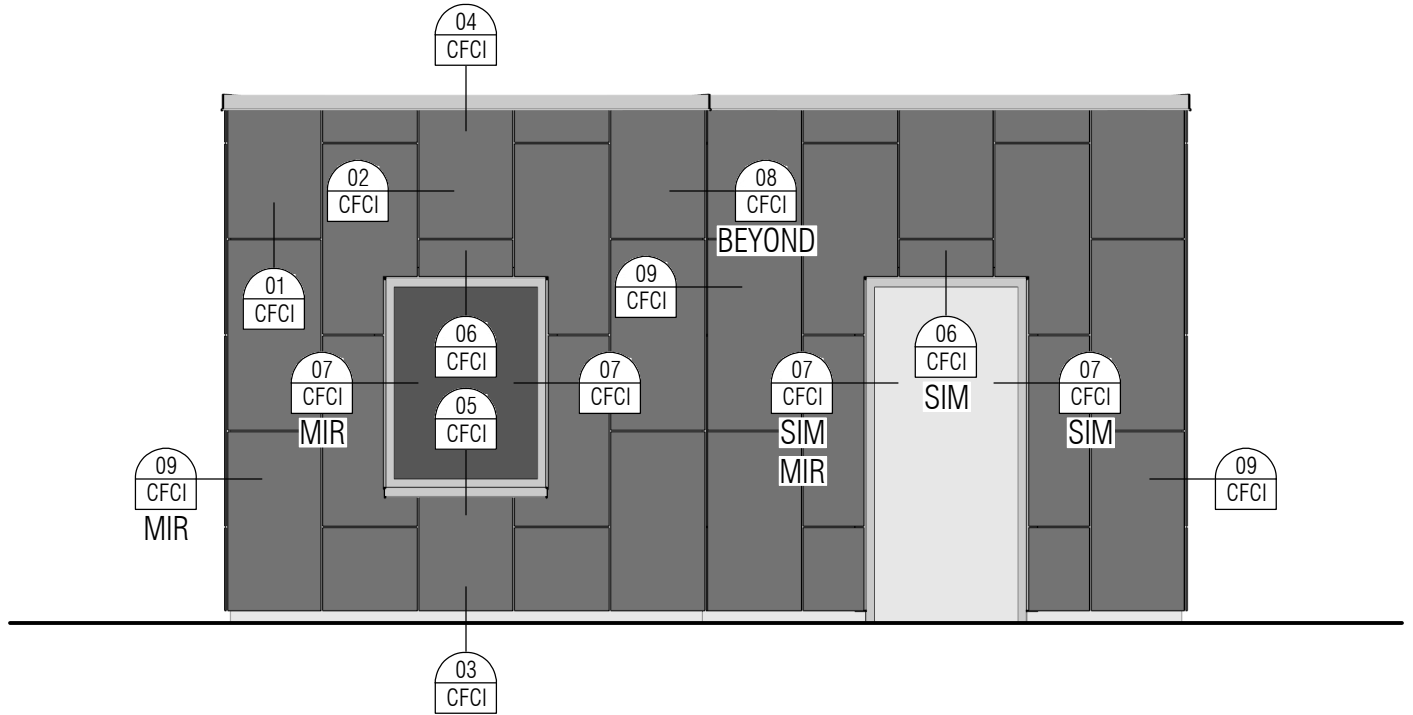
DRAWING NUMBER:  
CFCI00

SCALE:  
...

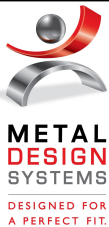
DRAWING DESCRIPTION:  
COVER SHEET

DRAWN BY:  
...

DATE:  
7/27/22



THE INFORMATION CONTAINED IN THIS DRAWING IS THE SOLE PROPERTY OF METAL DESIGN SYSTEMS INC. ANY REPRODUCTION, IN PART OR WHOLE, WITHOUT THE WRITTEN PERMISSION OF METAL DESIGN SYSTEMS INC. IS PROHIBITED.



**METAL DESIGN SYSTEMS**

103 Chamber Drive  
Anamosa, IA 52205  
Ph. (319) 362-7454

MATERIAL:  
...

PROJECT:  
FUNDERMAX CONCEALED FASTENER - CI

PROJECT NUMBER: ...	DRAWING NUMBER: CFCIPA	SCALE: NTS
------------------------	---------------------------	---------------

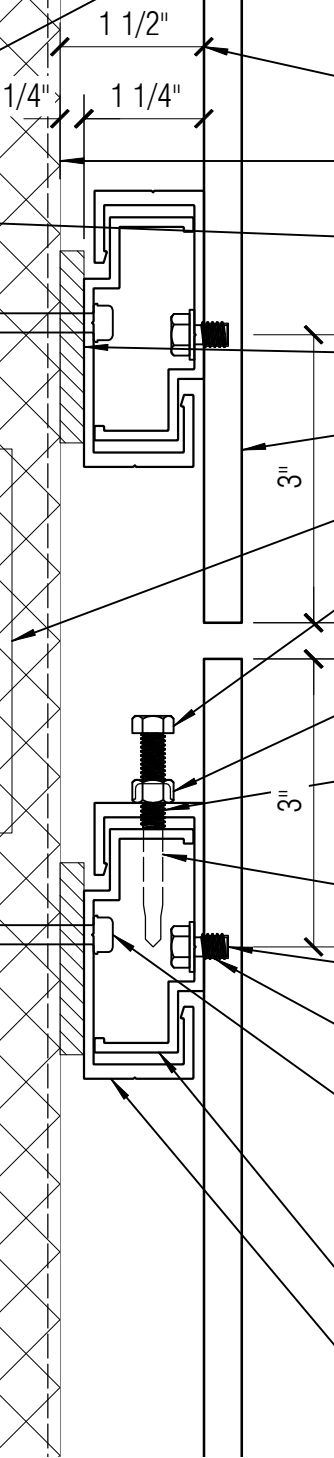
DRAWING DESCRIPTION:  
DETAIL LAYOUT

DRAWN BY: ...	DATE: 7/27/22
------------------	------------------

**NOTE:**  
AIR/MOISTURE BARRIER  
INSTALLER MUST PROVIDE  
WEATHER TIGHT SEAL AT  
ALL BARRIER TERMINATIONS

**NOTE:**  
1 1/2" MAX ALLOWABLE AIRSPACE  
OF INSTALLED PANELS ABOVE 40'  
(BACK OF PANEL TO FACE OF WALL  
OR INSULATION)

- WATER-RESISTIVE BARRIER (WRB) OVER EXTERIOR SHEATHING BY OTHERS TREAT ALL FASTENER PENETRATIONS AS PER WRB MANUFACTURER'S RECOMMENDATIONS BY INSTALLER
- 1 1/2" MAXIMUM AIR SPACE
- MINERAL FIBER INSULATION
- SUBSTRATE SUITABLE FOR STRUCTURAL AND CODE COMPLIANCE
- MIN 1/4" SHIM REQ'D FOR VENTILATION
- 10mm CF FUNDERMAX PANEL
- THERMALLY BROKEN FURRING SYSTEM
- 1/4-20 X 1" SS HEX LEVELING BOLT (TOP CLIP ONLY)
- 1/4-20 JAMB NUT
- FACTORY DRILLED / TAPPED HOLE (ONE PER CLIP)
- LOCKING SCREW, ONE PER PANEL
- FACTORY DRILLED HOLE
- SFS TUF-S-6X9-A4 TWO PER CLIP
- 1/4" SHIMS AND STAINLESS STEEL FASTENERS BY INSTALLER (SIZE, TYPE, AND QUANTITY AS APPROPRIATE FOR CONDITIONS 16" OC MAX)
- 4-0017-03 3" CLIP EXTRUSION BY MDSI
- 4-0017-00 CONTINUOUS EXTRUSION



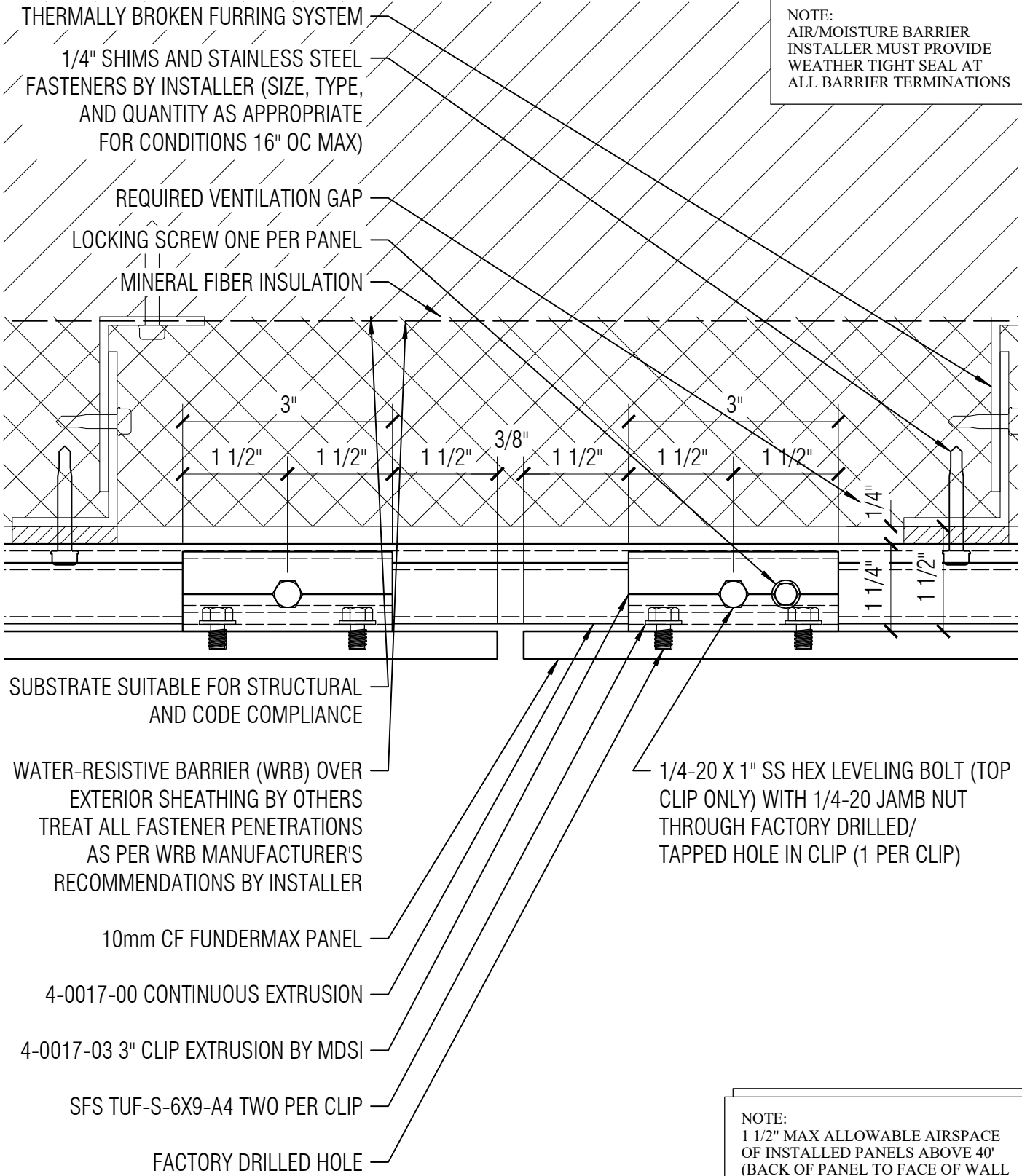
THE INFORMATION CONTAINED IN THIS DRAWING IS THE SOLE PROPERTY OF METAL DESIGN SYSTEMS INC. ANY REPRODUCTION, IN PART OR WHOLE, WITHOUT THE WRITTEN PERMISSION OF METAL DESIGN SYSTEMS INC. IS PROHIBITED.



**METAL DESIGN SYSTEMS**  
103 Chamber Drive  
Anamosa, IA 52205  
Ph. (319) 362-7454  
MATERIAL:  
...

PROJECT: FUNDERMAX CONCEALED FASTENER - CI		
PROJECT NUMBER: ...	DRAWING NUMBER: CFCI01	SCALE: 6" = 1'-0"
DRAWING DESCRIPTION: HORIZONTAL JOINT DETAIL		
DRAWN BY: ...		DATE: 7/27/22

\\cmcsi.local\dfsroot2\Company\Shared\Folders\Tech\System\Info\Fundermax\System Details - Fundermax.3dm page 39 of 46 printed 7/27/2022 9:27 last saved 7/27/2022 9:19



**NOTE:**  
 AIR/MOISTURE BARRIER  
 INSTALLER MUST PROVIDE  
 WEATHER TIGHT SEAL AT  
 ALL BARRIER TERMINATIONS

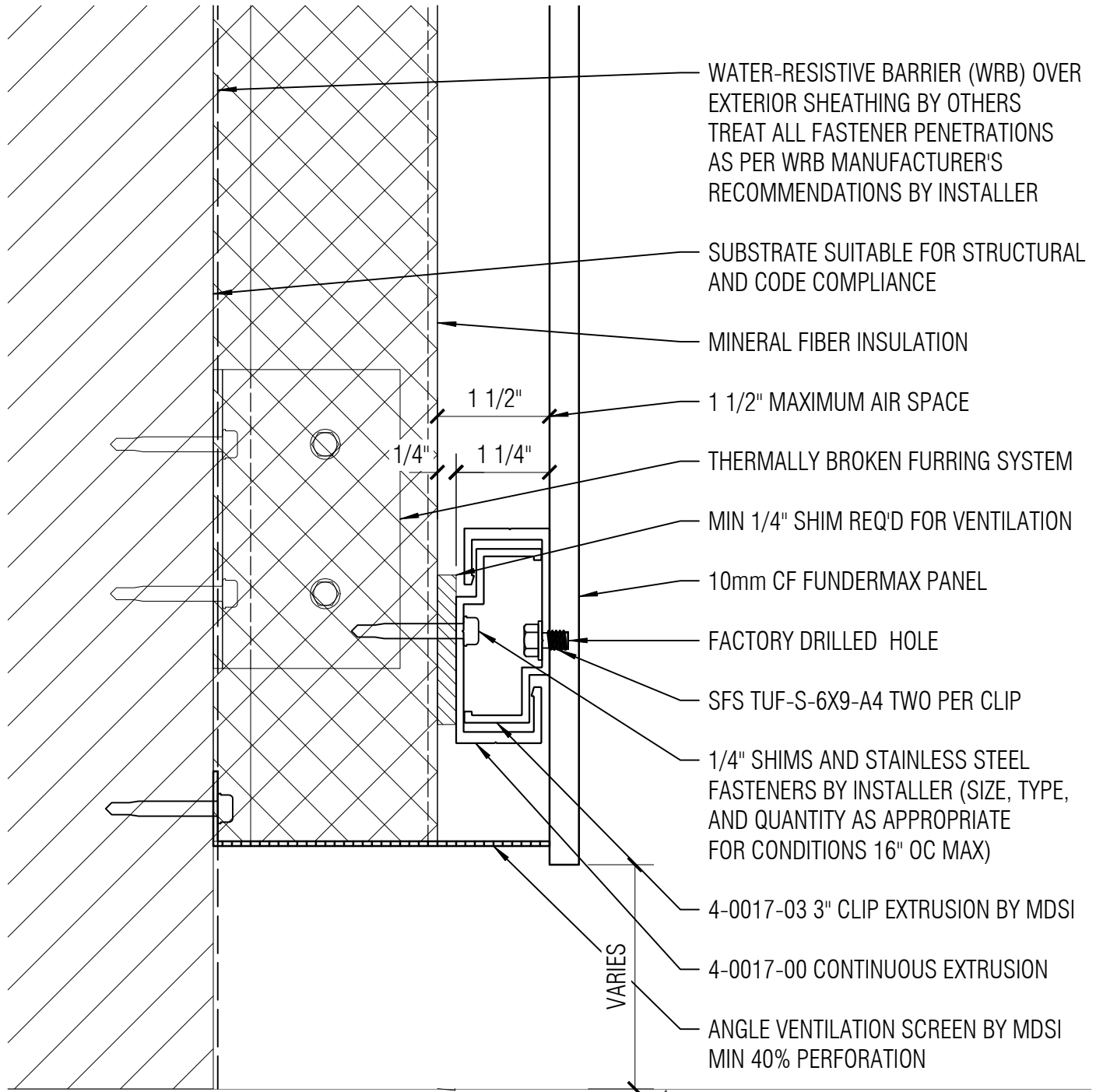
**NOTE:**  
 1 1/2" MAX ALLOWABLE AIRSPACE  
 OF INSTALLED PANELS ABOVE 40'  
 (BACK OF PANEL TO FACE OF WALL  
 OR INSULATION)

THE INFORMATION CONTAINED IN THIS  
 DRAWING IS THE SOLE PROPERTY OF  
 METAL DESIGN SYSTEMS INC.  
 ANY REPRODUCTION, IN PART OR WHOLE,  
 WITHOUT THE WRITTEN PERMISSION OF  
 METAL DESIGN SYSTEMS INC. IS PROHIBITED.



**METAL DESIGN SYSTEMS**  
 103 Chamber Drive  
 Anamosa, IA 52205  
 Ph. (319) 362-7454  
 MATERIAL:  
 ...

PROJECT: FUNDERMAX CONCEALED FASTENER - CI		
PROJECT NUMBER: ...	DRAWING NUMBER: CFCI02	SCALE: 6" = 1'-0"
DRAWING DESCRIPTION: VERTICAL JOINT DETAIL		
DRAWN BY: ...	DATE: 7/27/22	



WATER-RESISTIVE BARRIER (WRB) OVER EXTERIOR SHEATHING BY OTHERS  
TREAT ALL FASTENER PENETRATIONS AS PER WRB MANUFACTURER'S RECOMMENDATIONS BY INSTALLER

SUBSTRATE SUITABLE FOR STRUCTURAL AND CODE COMPLIANCE

MINERAL FIBER INSULATION

1 1/2" MAXIMUM AIR SPACE

THERMALLY BROKEN FURRING SYSTEM

MIN 1/4" SHIM REQ'D FOR VENTILATION

10mm CF FUNDERMAX PANEL

FACTORY DRILLED HOLE

SFS TUF-S-6X9-A4 TWO PER CLIP

1/4" SHIMS AND STAINLESS STEEL FASTENERS BY INSTALLER (SIZE, TYPE, AND QUANTITY AS APPROPRIATE FOR CONDITIONS 16" OC MAX)

4-0017-03 3" CLIP EXTRUSION BY MDSI

4-0017-00 CONTINUOUS EXTRUSION

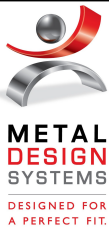
ANGLE VENTILATION SCREEN BY MDSI MIN 40% PERFORATION

VARIES

**NOTE:**  
AIR/MOISTURE BARRIER INSTALLER MUST PROVIDE WEATHER TIGHT SEAL AT ALL BARRIER TERMINATIONS

**NOTE:**  
1 1/2" MAX ALLOWABLE AIRSPACE OF INSTALLED PANELS ABOVE 40' (BACK OF PANEL TO FACE OF WALL OR INSULATION)

THE INFORMATION CONTAINED IN THIS DRAWING IS THE SOLE PROPERTY OF METAL DESIGN SYSTEMS INC. ANY REPRODUCTION, IN PART OR WHOLE, WITHOUT THE WRITTEN PERMISSION OF METAL DESIGN SYSTEMS INC. IS PROHIBITED.



**METAL DESIGN SYSTEMS**

103 Chamber Drive  
Anamosa, IA 52205  
Ph. (319) 362-7454

MATERIAL:

PROJECT:

FUNDERMAX CONCEALED FASTENER - CI

PROJECT NUMBER:

...

DRAWING NUMBER:

CFCI03

SCALE:

6" = 1'-0"

DRAWING DESCRIPTION:

GRADE TERMINATION DETAIL

DRAWN BY:

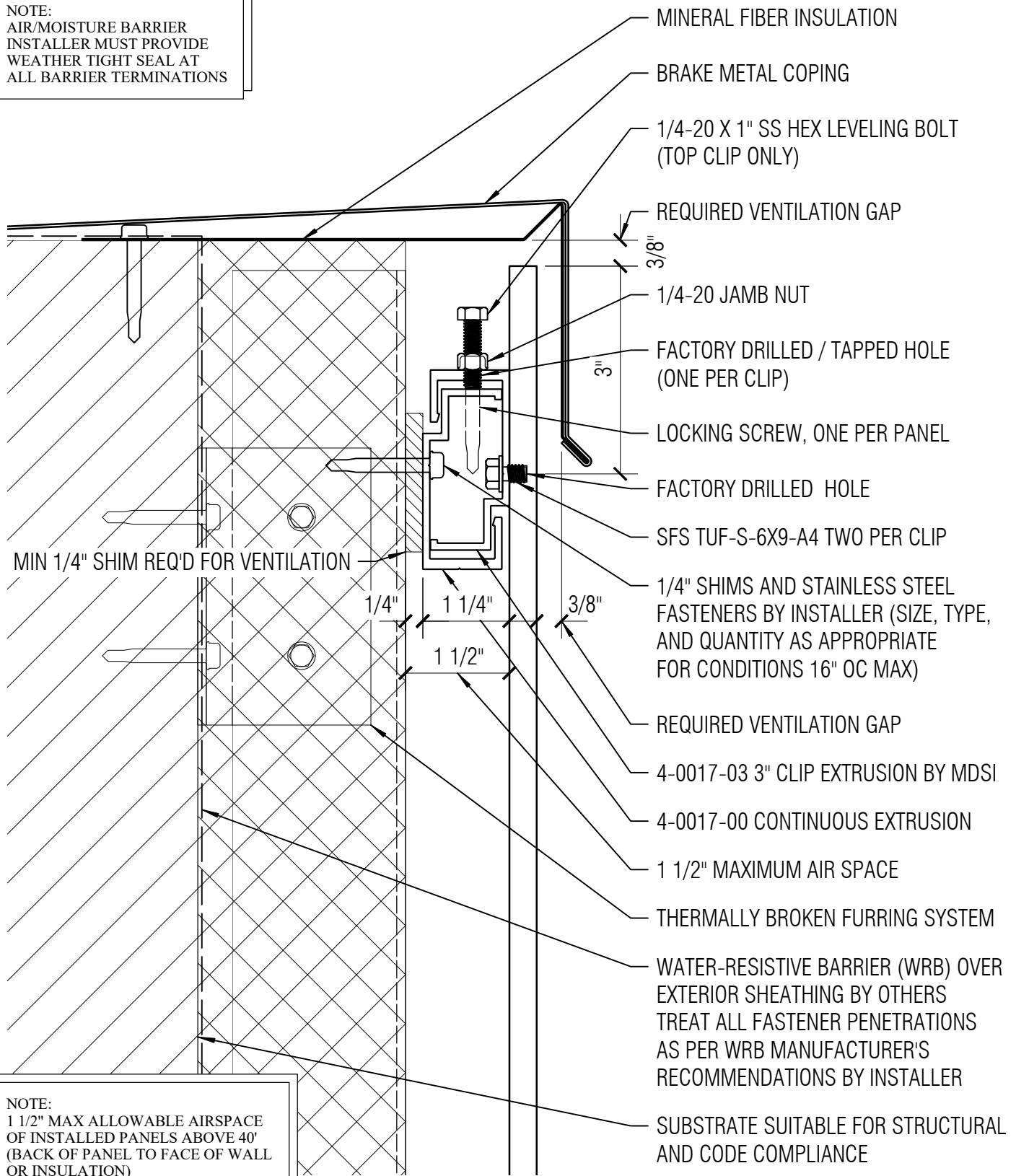
...

DATE:

7/27/22



NOTE:  
AIR/MOISTURE BARRIER  
INSTALLER MUST PROVIDE  
WEATHER TIGHT SEAL AT  
ALL BARRIER TERMINATIONS



MIN 1/4" SHIM REQ'D FOR VENTILATION

NOTE:  
1 1/2" MAX ALLOWABLE AIRSPACE  
OF INSTALLED PANELS ABOVE 40'  
(BACK OF PANEL TO FACE OF WALL  
OR INSULATION)

- MINERAL FIBER INSULATION
- BRAKE METAL COPING
- 1/4-20 X 1" SS HEX LEVELING BOLT (TOP CLIP ONLY)
- REQUIRED VENTILATION GAP
- 3/8"
- 1/4-20 JAMB NUT
- FACTORY DRILLED / TAPPED HOLE (ONE PER CLIP)
- LOCKING SCREW, ONE PER PANEL
- FACTORY DRILLED HOLE
- SFS TUF-S-6X9-A4 TWO PER CLIP
- 1/4" SHIMS AND STAINLESS STEEL FASTENERS BY INSTALLER (SIZE, TYPE, AND QUANTITY AS APPROPRIATE FOR CONDITIONS 16" OC MAX)
- REQUIRED VENTILATION GAP
- 4-0017-03 3" CLIP EXTRUSION BY MDSI
- 4-0017-00 CONTINUOUS EXTRUSION
- 1 1/2" MAXIMUM AIR SPACE
- THERMALLY BROKEN FURRING SYSTEM
- WATER-RESISTIVE BARRIER (WRB) OVER EXTERIOR SHEATHING BY OTHERS TREAT ALL FASTENER PENETRATIONS AS PER WRB MANUFACTURER'S RECOMMENDATIONS BY INSTALLER
- SUBSTRATE SUITABLE FOR STRUCTURAL AND CODE COMPLIANCE

\\cmcsi.local\dfsroot2\Company\Shared\Folders\Tech\System\Info\Fundermax\System Details - Fundermax 3d.m page 41 of 46 printed 7/27/2022 9:27 last saved 7/27/2022 9:19

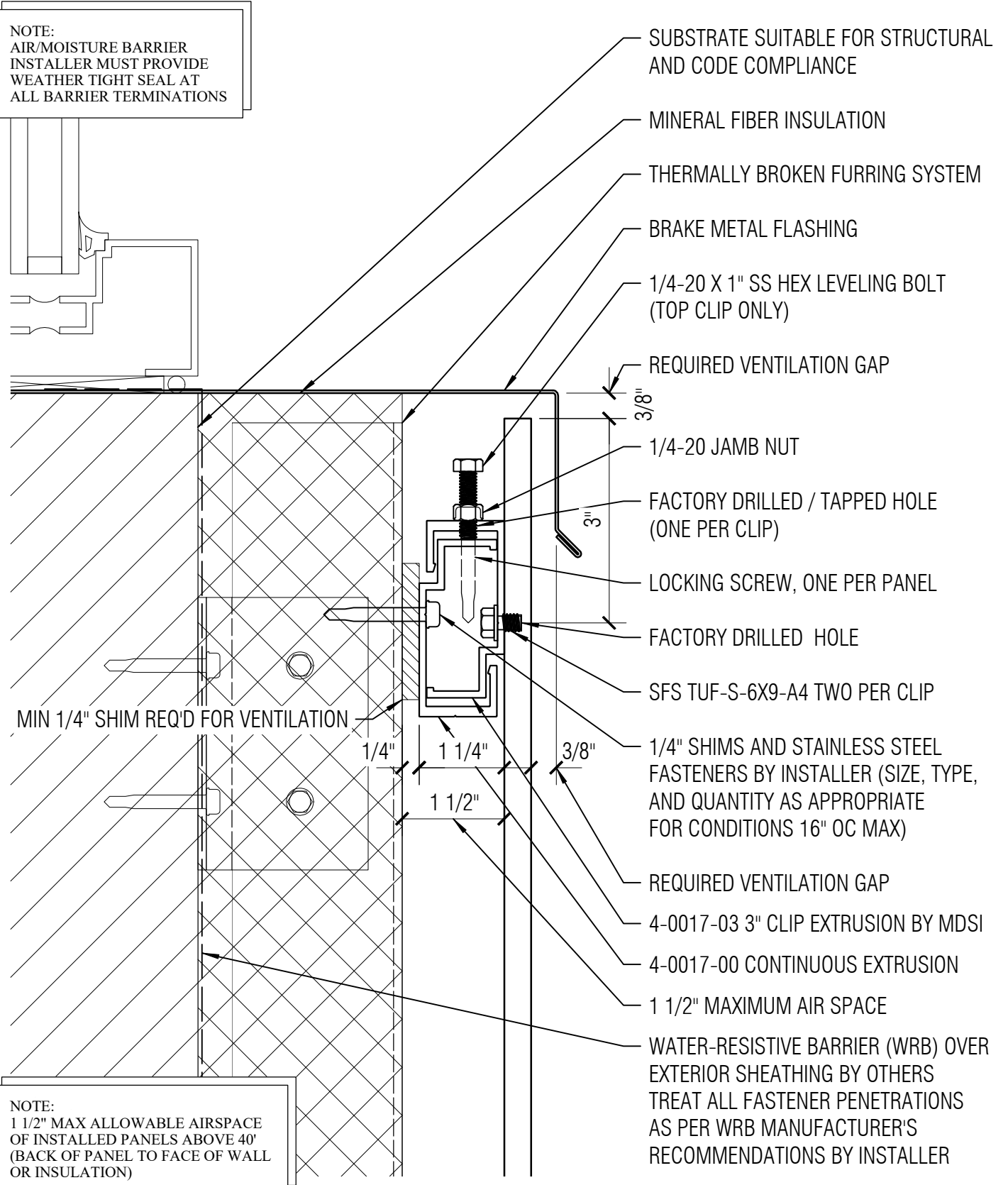
THE INFORMATION CONTAINED IN THIS DRAWING IS THE SOLE PROPERTY OF METAL DESIGN SYSTEMS INC. ANY REPRODUCTION, IN PART OR WHOLE, WITHOUT THE WRITTEN PERMISSION OF METAL DESIGN SYSTEMS INC. IS PROHIBITED.



**METAL DESIGN SYSTEMS**  
103 Chamber Drive  
Anamosa, IA 52205  
Ph. (319) 362-7454  
MATERIAL:  
...

PROJECT: FUNDERMAX CONCEALED FASTENER - CI		
PROJECT NUMBER: ...	DRAWING NUMBER: CFCI04	SCALE: 6" = 1'-0"
DRAWING DESCRIPTION: COPING TERMINATION DETAIL		
DRAWN BY: ...	DATE: 7/27/22	

**NOTE:**  
AIR/MOISTURE BARRIER  
INSTALLER MUST PROVIDE  
WEATHER TIGHT SEAL AT  
ALL BARRIER TERMINATIONS



MIN 1/4" SHIM REQ'D FOR VENTILATION

**NOTE:**  
1 1/2" MAX ALLOWABLE AIRSPACE  
OF INSTALLED PANELS ABOVE 40°  
(BACK OF PANEL TO FACE OF WALL  
OR INSULATION)

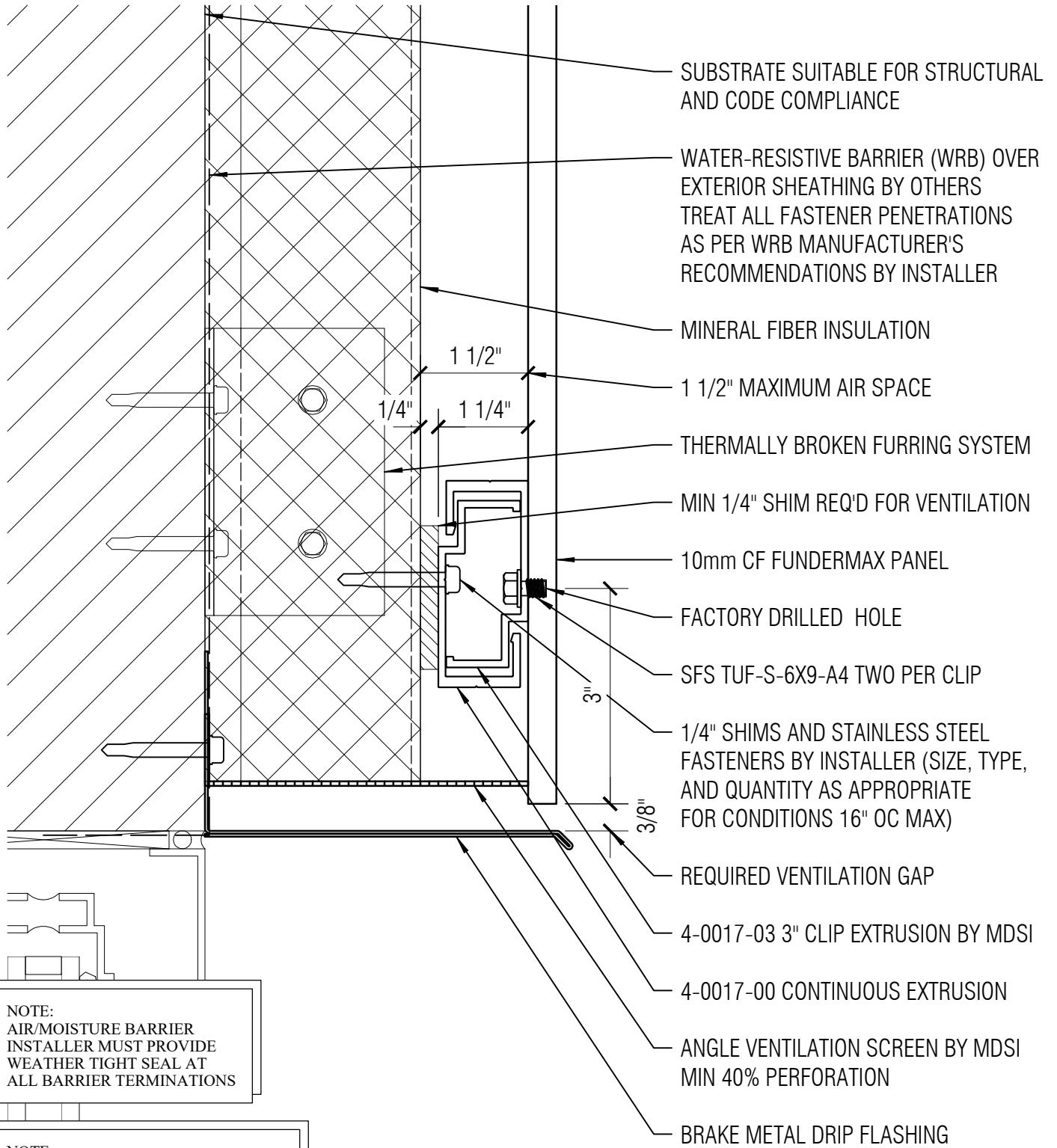
- SUBSTRATE SUITABLE FOR STRUCTURAL AND CODE COMPLIANCE
- MINERAL FIBER INSULATION
- THERMALLY BROKEN FURRING SYSTEM
- BRAKE METAL FLASHING
- 1/4-20 X 1" SS HEX LEVELING BOLT (TOP CLIP ONLY)
- REQUIRED VENTILATION GAP
- 3/8"
- 1/4-20 JAMB NUT
- 3"
- FACTORY DRILLED / TAPPED HOLE (ONE PER CLIP)
- LOCKING SCREW, ONE PER PANEL
- FACTORY DRILLED HOLE
- SFS TUF-S-6X9-A4 TWO PER CLIP
- 1/4" SHIMS AND STAINLESS STEEL FASTENERS BY INSTALLER (SIZE, TYPE, AND QUANTITY AS APPROPRIATE FOR CONDITIONS 16" OC MAX)
- REQUIRED VENTILATION GAP
- 4-0017-03 3" CLIP EXTRUSION BY MDSI
- 4-0017-00 CONTINUOUS EXTRUSION
- 1 1/2" MAXIMUM AIR SPACE
- WATER-RESISTIVE BARRIER (WRB) OVER EXTERIOR SHEATHING BY OTHERS TREAT ALL FASTENER PENETRATIONS AS PER WRB MANUFACTURER'S RECOMMENDATIONS BY INSTALLER

THE INFORMATION CONTAINED IN THIS DRAWING IS THE SOLE PROPERTY OF METAL DESIGN SYSTEMS INC. ANY REPRODUCTION, IN PART OR WHOLE, WITHOUT THE WRITTEN PERMISSION OF METAL DESIGN SYSTEMS INC. IS PROHIBITED.



**METAL DESIGN SYSTEMS**  
103 Chamber Drive  
Anamosa, IA 52205  
Ph. (319) 362-7454  
MATERIAL:  
...

PROJECT: FUNDERMAX CONCEALED FASTENER - CI		
PROJECT NUMBER: ...	DRAWING NUMBER: CFC105	SCALE: 6" = 1'-0"
DRAWING DESCRIPTION: WINDOW SILL TERMINATION DETAIL		
DRAWN BY: ...	DATE: 7/27/22	

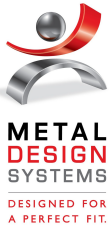


- SUBSTRATE SUITABLE FOR STRUCTURAL AND CODE COMPLIANCE
- WATER-RESISTIVE BARRIER (WRB) OVER EXTERIOR SHEATHING BY OTHERS TREAT ALL FASTENER PENETRATIONS AS PER WRB MANUFACTURER'S RECOMMENDATIONS BY INSTALLER
- MINERAL FIBER INSULATION
- 1 1/2" MAXIMUM AIR SPACE
- THERMALLY BROKEN FURRING SYSTEM
- MIN 1/4" SHIM REQ'D FOR VENTILATION
- 10mm CF FUNDERMAX PANEL
- FACTORY DRILLED HOLE
- SFS TUF-S-6X9-A4 TWO PER CLIP
- 1/4" SHIMS AND STAINLESS STEEL FASTENERS BY INSTALLER (SIZE, TYPE, AND QUANTITY AS APPROPRIATE FOR CONDITIONS 16" OC MAX)
- REQUIRED VENTILATION GAP
- 4-0017-03 3" CLIP EXTRUSION BY MDSI
- 4-0017-00 CONTINUOUS EXTRUSION
- ANGLE VENTILATION SCREEN BY MDSI MIN 40% PERFORATION
- BRAKE METAL DRIP FLASHING

NOTE:  
AIR/MOISTURE BARRIER  
INSTALLER MUST PROVIDE  
WEATHER TIGHT SEAL AT  
ALL BARRIER TERMINATIONS

NOTE:  
1 1/2" MAX ALLOWABLE AIRSPACE  
OF INSTALLED PANELS ABOVE 40'  
(BACK OF PANEL TO FACE OF WALL  
OR INSULATION)

THE INFORMATION CONTAINED IN THIS DRAWING IS THE SOLE PROPERTY OF METAL DESIGN SYSTEMS INC. ANY REPRODUCTION, IN PART OR WHOLE, WITHOUT THE WRITTEN PERMISSION OF METAL DESIGN SYSTEMS INC. IS PROHIBITED.



**METAL DESIGN SYSTEMS**

103 Chamber Drive  
Anamosa, IA 52205  
Ph. (319) 362-7454

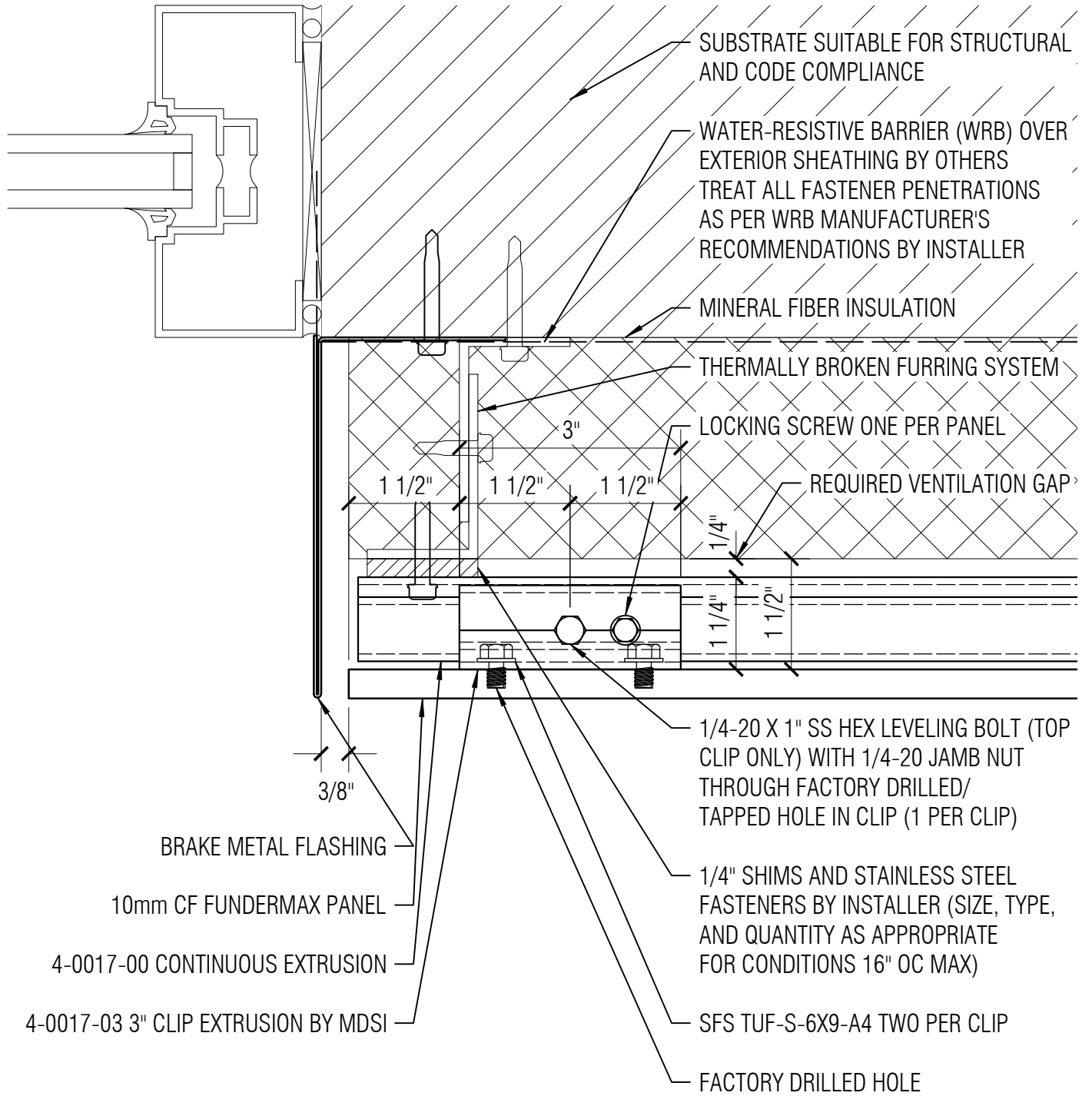
MATERIAL:  
...

PROJECT:  
FUNDERMAX CONCEALED FASTENER - CI

PROJECT NUMBER: ...	DRAWING NUMBER: CFC106	SCALE: 6" = 1'-0"
------------------------	---------------------------	----------------------

DRAWING DESCRIPTION:  
WINDOW HEAD TERMINATION DETAIL

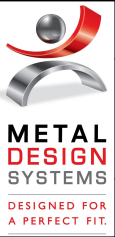
DRAWN BY: ...	DATE: 7/27/22
------------------	------------------



**NOTE:**  
 AIR/MOISTURE BARRIER  
 INSTALLER MUST PROVIDE  
 WEATHER TIGHT SEAL AT  
 ALL BARRIER TERMINATIONS

**NOTE:**  
 1 1/2" MAX ALLOWABLE AIRSPACE  
 OF INSTALLED PANELS ABOVE 40"  
 (BACK OF PANEL TO FACE OF WALL  
 OR INSULATION)

THE INFORMATION CONTAINED IN THIS  
 DRAWING IS THE SOLE PROPERTY OF  
 METAL DESIGN SYSTEMS INC.  
 ANY REPRODUCTION, IN PART OR WHOLE,  
 WITHOUT THE WRITTEN PERMISSION OF  
 METAL DESIGN SYSTEMS INC. IS PROHIBITED.



**METAL DESIGN SYSTEMS**  
 103 Chamber Drive  
 Anamosa, IA 52205  
 Ph. (319) 362-7454  
 MATERIAL:  
 ...

PROJECT: FUNDERMAX CONCEALED FASTENER - CI		
PROJECT NUMBER: ...	DRAWING NUMBER: CFCI07	SCALE: 6" = 1'-0"
DRAWING DESCRIPTION: WINDOW JAMB TERMINATION DETAIL		
DRAWN BY: ...	DATE: 7/27/22	

NOTE:  
AIR/MOISTURE BARRIER  
INSTALLER MUST PROVIDE  
WEATHER TIGHT SEAL AT  
ALL BARRIER TERMINATIONS

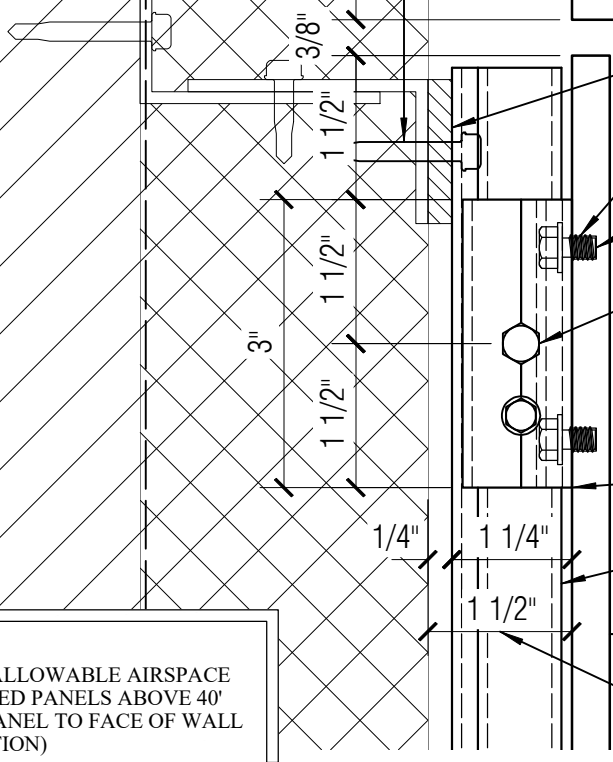
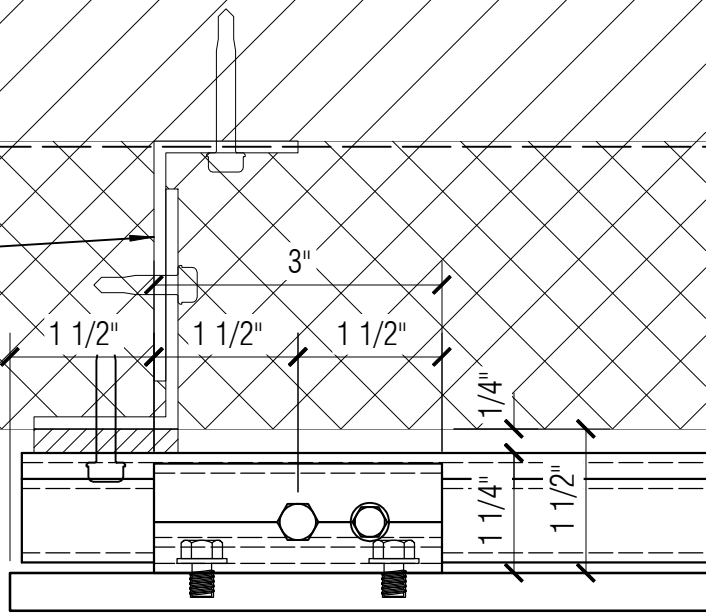
SUBSTRATE SUITABLE FOR STRUCTURAL  
AND CODE COMPLIANCE

WATER-RESISTIVE BARRIER (WRB) OVER  
EXTERIOR SHEATHING BY OTHERS  
TREAT ALL FASTENER PENETRATIONS  
AS PER WRB MANUFACTURER'S  
RECOMMENDATIONS BY INSTALLER

MINERAL FIBER INSULATION

THERMALLY BROKEN FURRING SYSTEM

1/4" SHIMS AND STAINLESS STEEL  
FASTENERS BY INSTALLER (SIZE, TYPE,  
AND QUANTITY AS APPROPRIATE  
FOR CONDITIONS 16" OC MAX)



MIN 1/4" SHIM REQ'D FOR VENTILATION

SFS TUF-S-6X9-A4 TWO PER CLIP

FACTORY DRILLED HOLE

1/4-20 X 1" SS HEX LEVELING BOLT (TOP  
CLIP ONLY) WITH 1/4-20 JAMB NUT  
THROUGH FACTORY DRILLED/  
TAPPED HOLE IN CLIP (1 PER CLIP)

4-0017-03 3" CLIP EXTRUSION BY MDSI

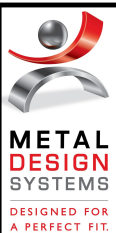
4-0017-00 CONTINUOUS EXTRUSION

10mm CF FUNDERMAX PANEL

1 1/2" MAXIMUM AIR SPACE

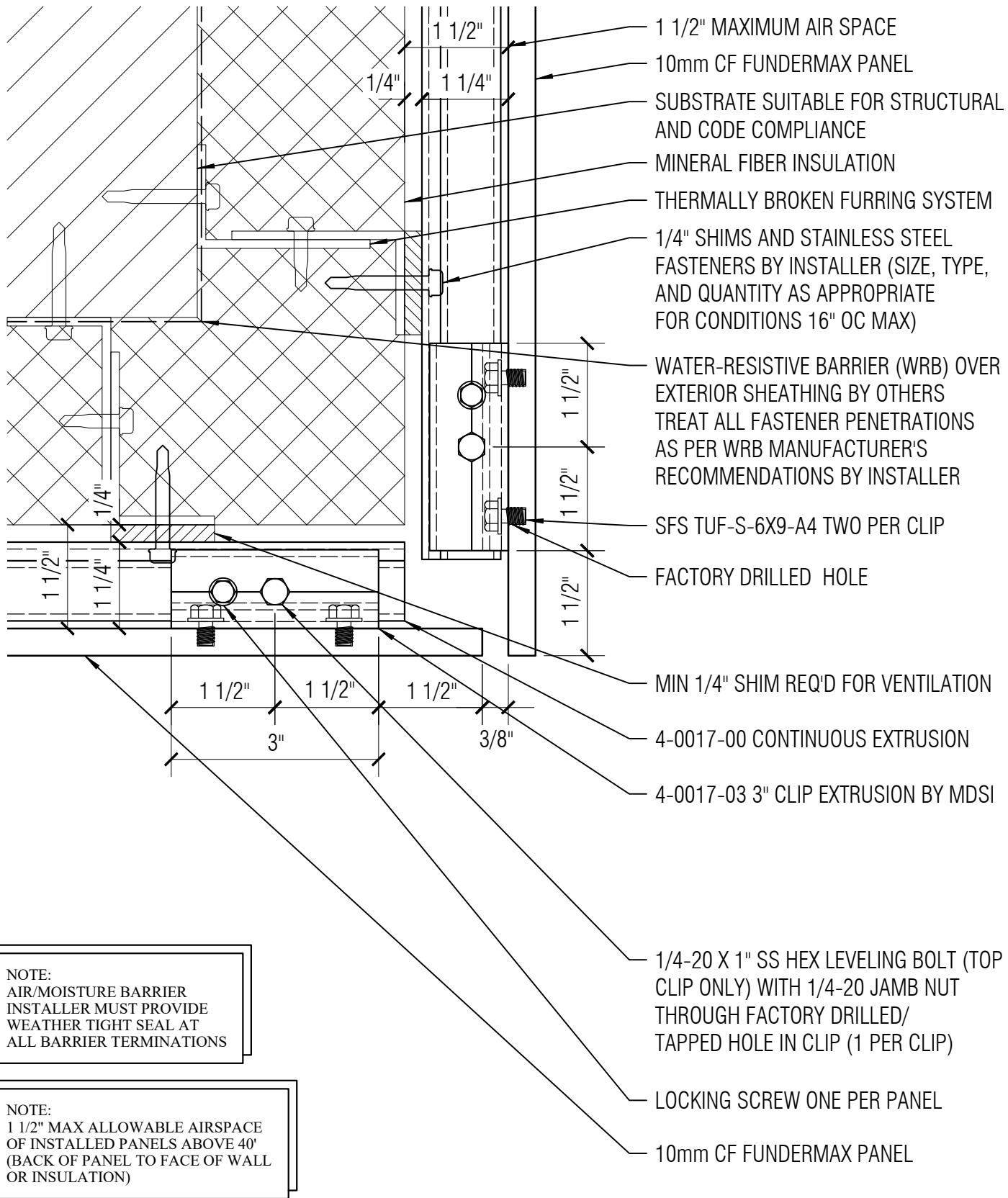
NOTE:  
1 1/2" MAX ALLOWABLE AIRSPACE  
OF INSTALLED PANELS ABOVE 40'  
(BACK OF PANEL TO FACE OF WALL  
OR INSULATION)

THE INFORMATION CONTAINED IN THIS  
DRAWING IS THE SOLE PROPERTY OF  
METAL DESIGN SYSTEMS INC.  
ANY REPRODUCTION, IN PART OR WHOLE,  
WITHOUT THE WRITTEN PERMISSION OF  
METAL DESIGN SYSTEMS INC. IS PROHIBITED.



**METAL DESIGN SYSTEMS**  
103 Chamber Drive  
Anamosa, IA 52205  
Ph. (319) 362-7454  
MATERIAL:  
...

PROJECT: FUNDERMAX CONCEALED FASTENER - CI		
PROJECT NUMBER: ...	DRAWING NUMBER: CFC108	SCALE: 6" = 1'-0"
DRAWING DESCRIPTION: INSIDE CORNER DETAIL		
DRAWN BY: ...	DATE: 7/27/22	



- 1 1/2" MAXIMUM AIR SPACE
- 10mm CF FUNDERMAX PANEL
- SUBSTRATE SUITABLE FOR STRUCTURAL AND CODE COMPLIANCE
- MINERAL FIBER INSULATION
- THERMALLY BROKEN FURRING SYSTEM
- 1/4" SHIMS AND STAINLESS STEEL FASTENERS BY INSTALLER (SIZE, TYPE, AND QUANTITY AS APPROPRIATE FOR CONDITIONS 16" OC MAX)
- WATER-RESISTIVE BARRIER (WRB) OVER EXTERIOR SHEATHING BY OTHERS TREAT ALL FASTENER PENETRATIONS AS PER WRB MANUFACTURER'S RECOMMENDATIONS BY INSTALLER
- SFS TUF-S-6X9-A4 TWO PER CLIP
- FACTORY DRILLED HOLE
- MIN 1/4" SHIM REQ'D FOR VENTILATION
- 4-0017-00 CONTINUOUS EXTRUSION
- 4-0017-03 3" CLIP EXTRUSION BY MDSI
- 1/4-20 X 1" SS HEX LEVELING BOLT (TOP CLIP ONLY) WITH 1/4-20 JAMB NUT THROUGH FACTORY DRILLED/ TAPPED HOLE IN CLIP (1 PER CLIP)
- LOCKING SCREW ONE PER PANEL
- 10mm CF FUNDERMAX PANEL

**NOTE:**  
AIR/MOISTURE BARRIER  
INSTALLER MUST PROVIDE  
WEATHER TIGHT SEAL AT  
ALL BARRIER TERMINATIONS

**NOTE:**  
1 1/2" MAX ALLOWABLE AIRSPACE  
OF INSTALLED PANELS ABOVE 40'  
(BACK OF PANEL TO FACE OF WALL  
OR INSULATION)

THE INFORMATION CONTAINED IN THIS DRAWING IS THE SOLE PROPERTY OF METAL DESIGN SYSTEMS INC. ANY REPRODUCTION, IN PART OR WHOLE, WITHOUT THE WRITTEN PERMISSION OF METAL DESIGN SYSTEMS INC. IS PROHIBITED.



**METAL DESIGN SYSTEMS**  
103 Chamber Drive  
Anamosa, IA 52205  
Ph. (319) 362-7454  
MATERIAL:  
...

PROJECT: FUNDERMAX CONCEALED FASTENER - CI		
PROJECT NUMBER: ...	DRAWING NUMBER: CFCI09	SCALE: 6" = 1'-0"
DRAWING DESCRIPTION: OUTSIDE CORNER DETAIL		
DRAWN BY: ...		DATE: 7/20/23