

EQUITONE

EXPOSED FASTENER
WITH CONTINUOUS INSULATION
STANDARD APPLICATION
8mm MATERIAL

DRAWING INDEX

EFCI00	COVER SHEET
EFCIPA	DETAIL LAYOUT
EFCI01	HORIZONTAL JOINT DETAIL
EFCI02	VERTICAL JOINT DETAIL
EFCI03	GRADE TERMINATION DETAIL
EFCI04	COPING TERMINATION DETAIL
EFCI05	WINDOW SILL DETAIL
EFCI06	WINDOW HEAD DETAIL
EFCI07	WINDOW JAMB DETAIL
EFCI08	INSIDE CORNER DETAIL
EFCI09	OUTSIDE CORNER DETAIL
EFCI10	INTERMEDIATE SUPPORT DETAIL
EFCI11	RIVET SPECIFICATIONS

THE INFORMATION CONTAINED IN THIS DRAWING IS THE SOLE PROPERTY OF METAL DESIGN SYSTEMS INC.

ANY REPRODUCTION, IN PART OR WHOLE, WITHOUT THE WRITTEN PERMISSION OF METAL DESIGN SYSTEMS INC. IS PROHIBITED.



METAL DESIGN SYSTEMS

103 Chamber Drive
Anamosa, IA 52205
Ph. (319) 362-7454

MATERIAL:
...

PROJECT:

EQUITONE EXPOSED FASTENER - CI - 8mm MATERIAL

PROJECT NUMBER:

...

DRAWING NUMBER:

EFCI00

SCALE:

...

DRAWING DESCRIPTION:

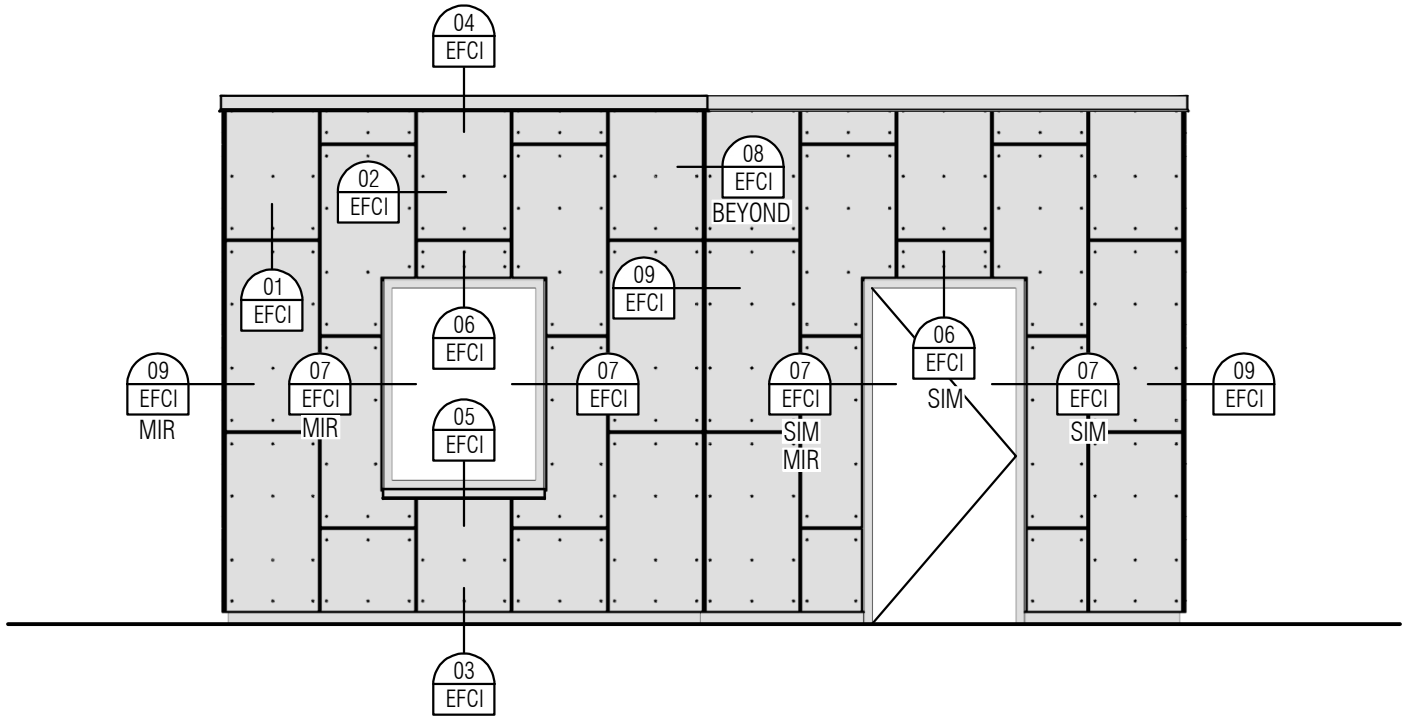
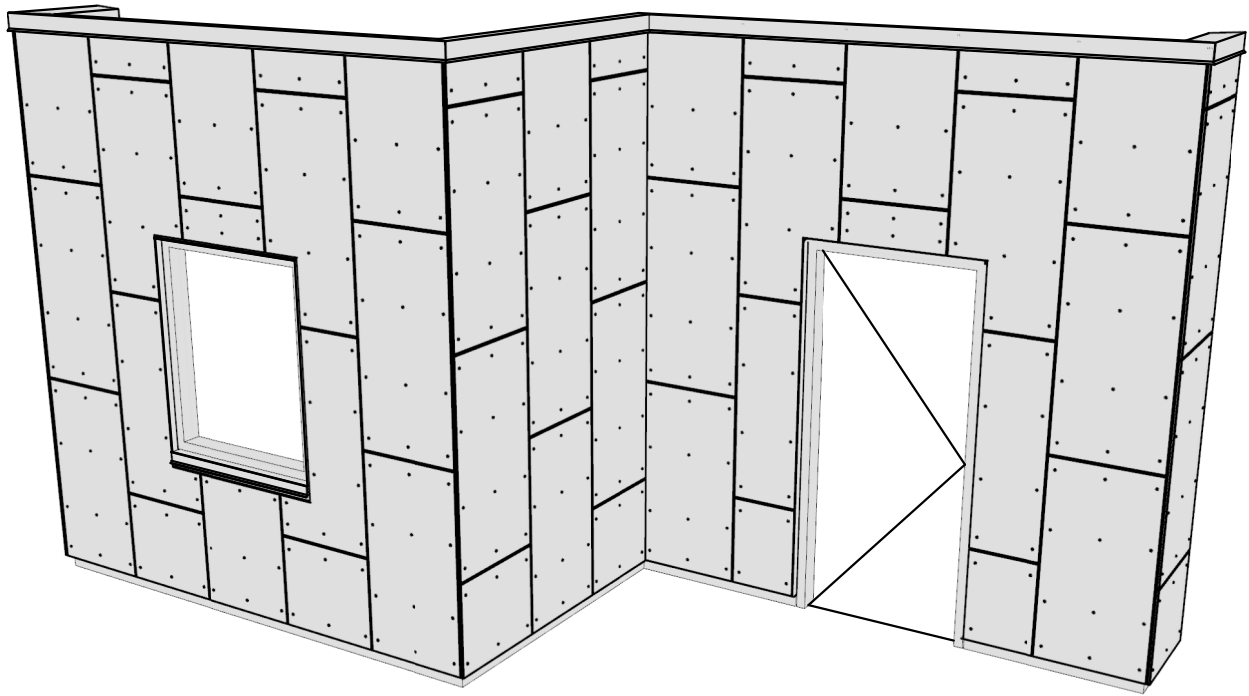
COVER SHEET

DRAWN BY:

...

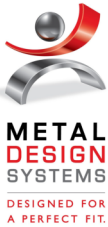
DATE:

01/22/2024



THE INFORMATION CONTAINED IN THIS DRAWING IS THE SOLE PROPERTY OF METAL DESIGN SYSTEMS INC.

ANY REPRODUCTION, IN PART OR WHOLE, WITHOUT THE WRITTEN PERMISSION OF METAL DESIGN SYSTEMS INC. IS PROHIBITED.



METAL DESIGN SYSTEMS

103 Chamber Drive
Anamosa, IA 52205
Ph. (319) 362-7454

MATERIAL:
...

PROJECT:

EQUITONE EXPOSED FASTENER - CI - 8mm MATERIAL

PROJECT NUMBER:

...

DRAWING NUMBER:

EFCIPA

SCALE:

NTS

DRAWING DESCRIPTION:

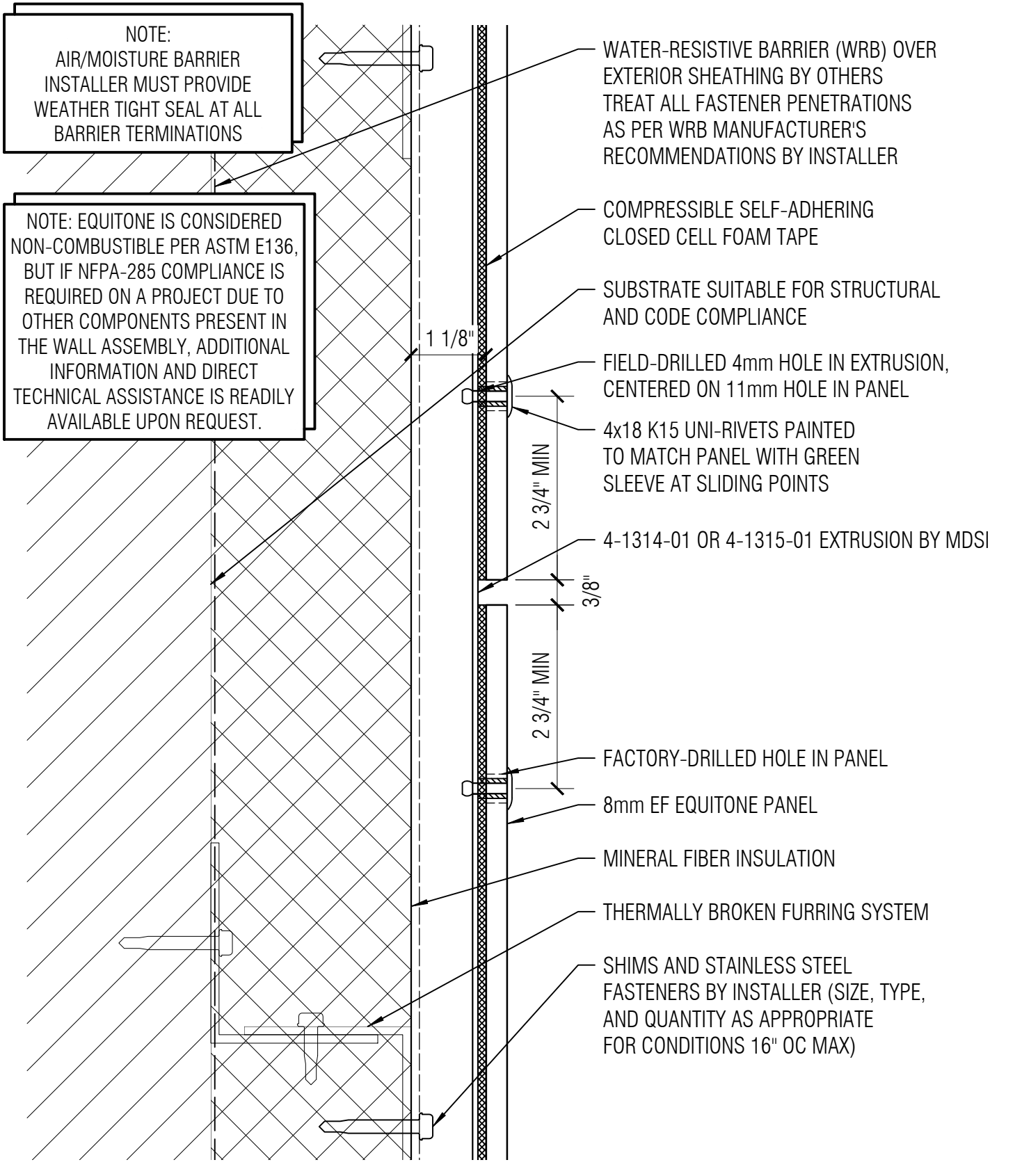
DETAIL LAYOUT

DRAWN BY:

...

DATE:

01/22/2024

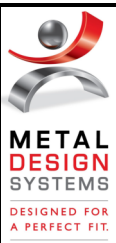


NOTE:
AIR/MOISTURE BARRIER
INSTALLER MUST PROVIDE
WEATHER TIGHT SEAL AT ALL
BARRIER TERMINATIONS

NOTE: EQUITONE IS CONSIDERED
NON-COMBUSTIBLE PER ASTM E136,
BUT IF NFPA-285 COMPLIANCE IS
REQUIRED ON A PROJECT DUE TO
OTHER COMPONENTS PRESENT IN
THE WALL ASSEMBLY, ADDITIONAL
INFORMATION AND DIRECT
TECHNICAL ASSISTANCE IS READILY
AVAILABLE UPON REQUEST.

- WATER-RESISTIVE BARRIER (WRB) OVER EXTERIOR SHEATHING BY OTHERS TREAT ALL FASTENER PENETRATIONS AS PER WRB MANUFACTURER'S RECOMMENDATIONS BY INSTALLER
- COMPRESSIBLE SELF-ADHERING CLOSED CELL FOAM TAPE
- SUBSTRATE SUITABLE FOR STRUCTURAL AND CODE COMPLIANCE
- FIELD-DRILLED 4mm HOLE IN EXTRUSION, CENTERED ON 11mm HOLE IN PANEL
- 4x18 K15 UNI-RIVETS PAINTED TO MATCH PANEL WITH GREEN SLEEVE AT SLIDING POINTS
- 4-1314-01 OR 4-1315-01 EXTRUSION BY MDSI
- FACTORY-DRILLED HOLE IN PANEL
- 8mm EF EQUITONE PANEL
- MINERAL FIBER INSULATION
- THERMALLY BROKEN FURRING SYSTEM
- SHIMS AND STAINLESS STEEL FASTENERS BY INSTALLER (SIZE, TYPE, AND QUANTITY AS APPROPRIATE FOR CONDITIONS 16" OC MAX)

THE INFORMATION CONTAINED IN THIS DRAWING IS THE SOLE PROPERTY OF METAL DESIGN SYSTEMS INC.
ANY REPRODUCTION, IN PART OR WHOLE, WITHOUT THE WRITTEN PERMISSION OF METAL DESIGN SYSTEMS INC. IS PROHIBITED.

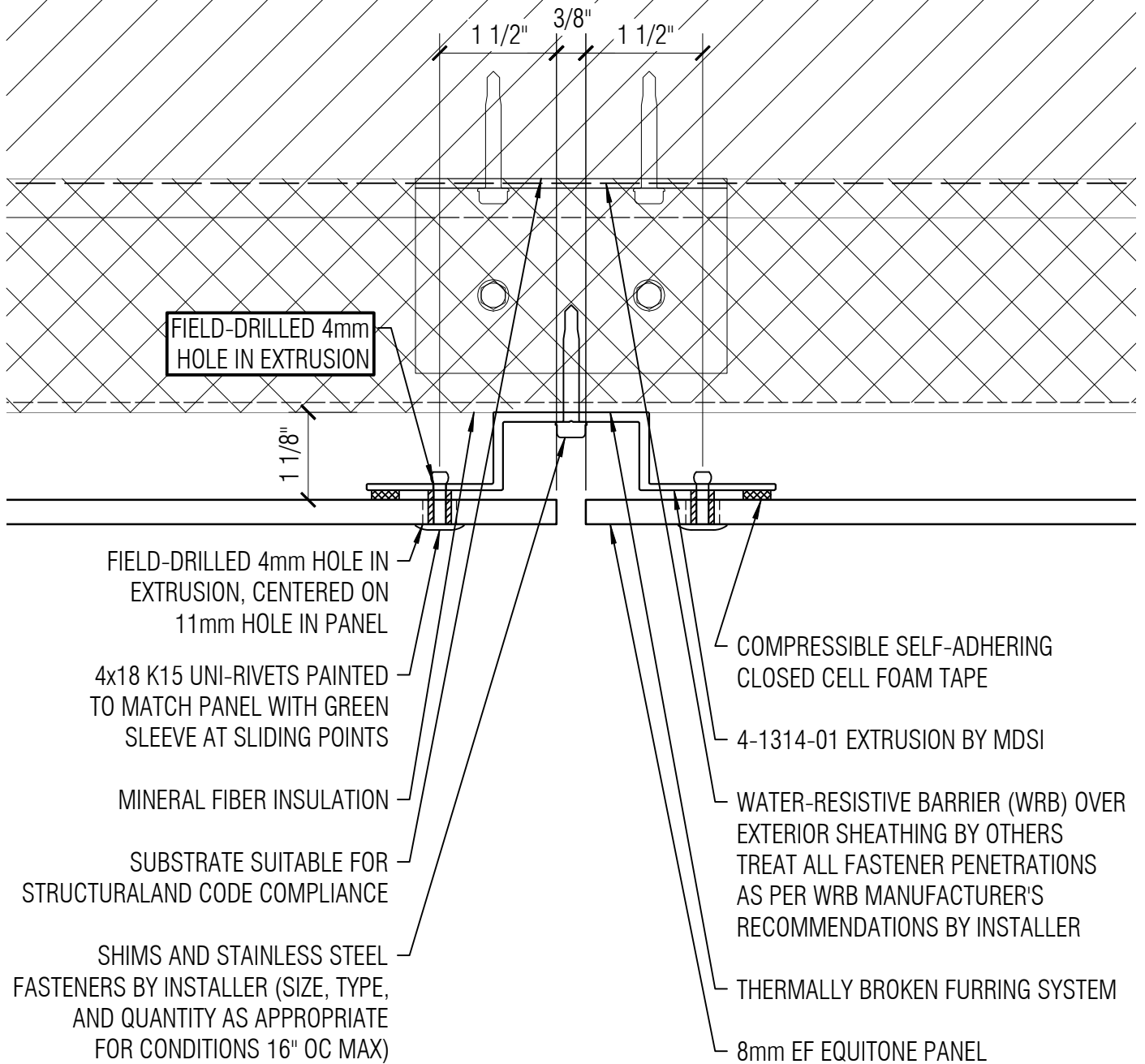


METAL DESIGN SYSTEMS
103 Chamber Drive
Anamosa, IA 52205
Ph. (319) 362-7454
MATERIAL:
...

PROJECT: EQUITONE EXPOSED FASTENER - CI - 8mm MATERIAL		
PROJECT NUMBER: ...	DRAWING NUMBER: EFCI01	SCALE: 6" = 1'-0"
DRAWING DESCRIPTION: HORIZONTAL JOINT DETAIL		
DRAWN BY: ...	DATE: 01/22/2024	

NOTE: EQUITONE IS CONSIDERED NON-COMBUSTIBLE PER ASTM E136, BUT IF NFPA-285 COMPLIANCE IS REQUIRED ON A PROJECT DUE TO OTHER COMPONENTS PRESENT IN THE WALL ASSEMBLY, ADDITIONAL INFORMATION AND DIRECT TECHNICAL ASSISTANCE IS READILY AVAILABLE UPON REQUEST.

NOTE:
AIR/MOISTURE BARRIER
INSTALLER MUST PROVIDE
WEATHER TIGHT SEAL AT ALL
BARRIER TERMINATIONS



FIELD-DRILLED 4mm
HOLE IN EXTRUSION

1 1/8"

FIELD-DRILLED 4mm HOLE IN
EXTRUSION, CENTERED ON
11mm HOLE IN PANEL

4x18 K15 UNI-RIVETS PAINTED
TO MATCH PANEL WITH GREEN
SLEEVE AT SLIDING POINTS

MINERAL FIBER INSULATION

SUBSTRATE SUITABLE FOR
STRUCTURAL AND CODE COMPLIANCE

SHIMS AND STAINLESS STEEL
FASTENERS BY INSTALLER (SIZE, TYPE,
AND QUANTITY AS APPROPRIATE
FOR CONDITIONS 16" OC MAX)

COMPRESSIBLE SELF-ADHERING
CLOSED CELL FOAM TAPE

4-1314-01 EXTRUSION BY MDSI

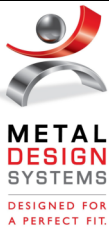
WATER-RESISTIVE BARRIER (WRB) OVER
EXTERIOR SHEATHING BY OTHERS
TREAT ALL FASTENER PENETRATIONS
AS PER WRB MANUFACTURER'S
RECOMMENDATIONS BY INSTALLER

THERMALLY BROKEN FURRING SYSTEM

8mm EF EQUITONE PANEL

THE INFORMATION CONTAINED IN THIS
DRAWING IS THE SOLE PROPERTY OF
METAL DESIGN SYSTEMS INC.

ANY REPRODUCTION, IN PART OR WHOLE,
WITHOUT THE WRITTEN PERMISSION OF
METAL DESIGN SYSTEMS INC. IS PROHIBITED.



METAL DESIGN SYSTEMS

103 Chamber Drive
Anamosa, IA 52205
Ph. (319) 362-7454

MATERIAL:
...

PROJECT:

EQUITONE EXPOSED FASTENER - CI - 8mm MATERIAL

PROJECT NUMBER:

...

DRAWING NUMBER:

EFCI02

SCALE:

6" = 1'-0"

DRAWING DESCRIPTION:

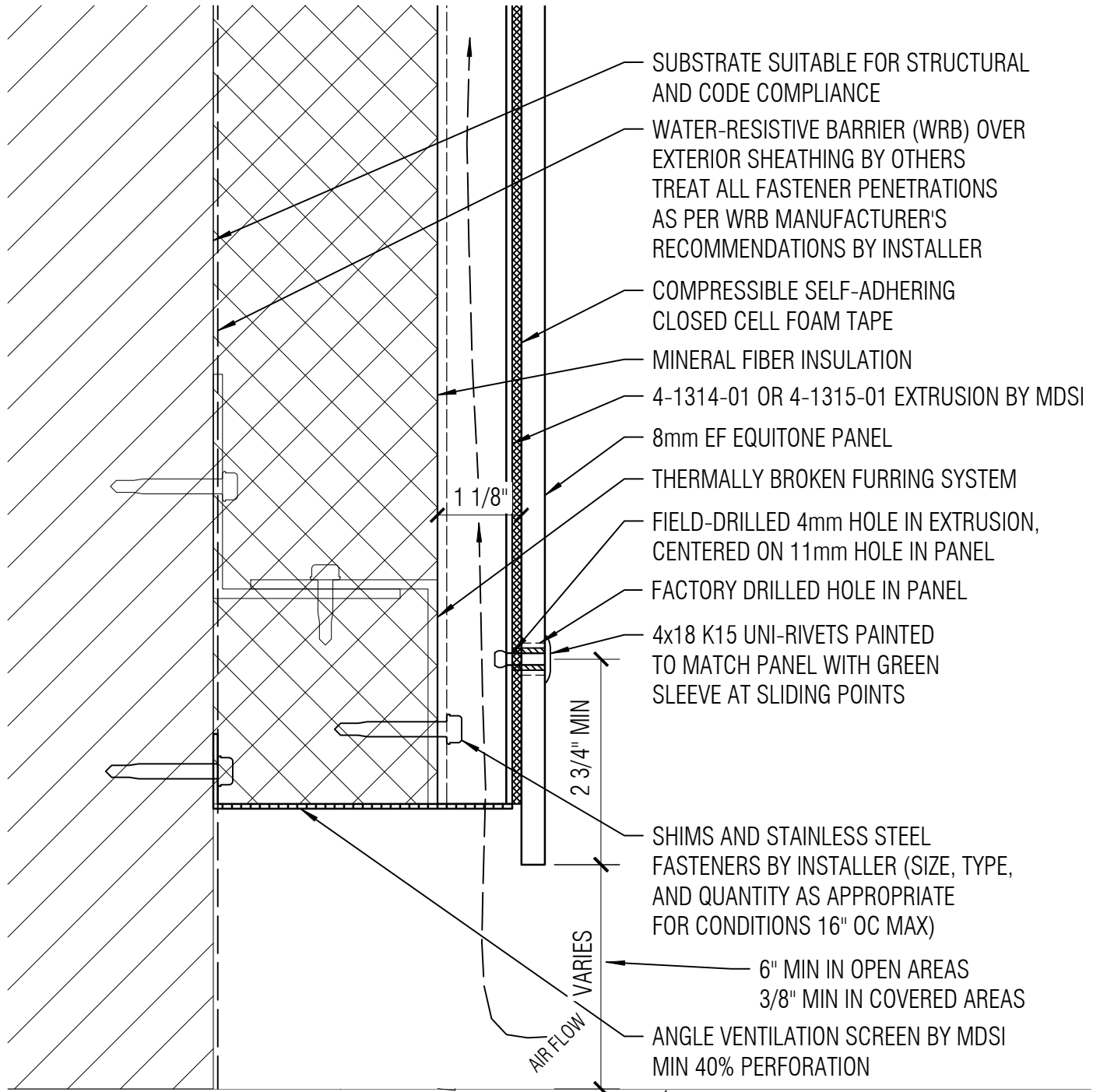
VERTICAL JOINT DETAIL

DRAWN BY:

...

DATE:

01/22/2024



NOTE: EQUITONE IS CONSIDERED NON-COMBUSTIBLE PER ASTM E136, BUT IF NFPA-285 COMPLIANCE IS REQUIRED ON A PROJECT DUE TO OTHER COMPONENTS PRESENT IN THE WALL ASSEMBLY, ADDITIONAL INFORMATION AND DIRECT TECHNICAL ASSISTANCE IS READILY AVAILABLE UPON REQUEST.

NOTE: AIR/MOISTURE BARRIER INSTALLER MUST PROVIDE WEATHER TIGHT SEAL AT ALL BARRIER TERMINATIONS

THE INFORMATION CONTAINED IN THIS DRAWING IS THE SOLE PROPERTY OF METAL DESIGN SYSTEMS INC.
 ANY REPRODUCTION, IN PART OR WHOLE, WITHOUT THE WRITTEN PERMISSION OF METAL DESIGN SYSTEMS INC. IS PROHIBITED.

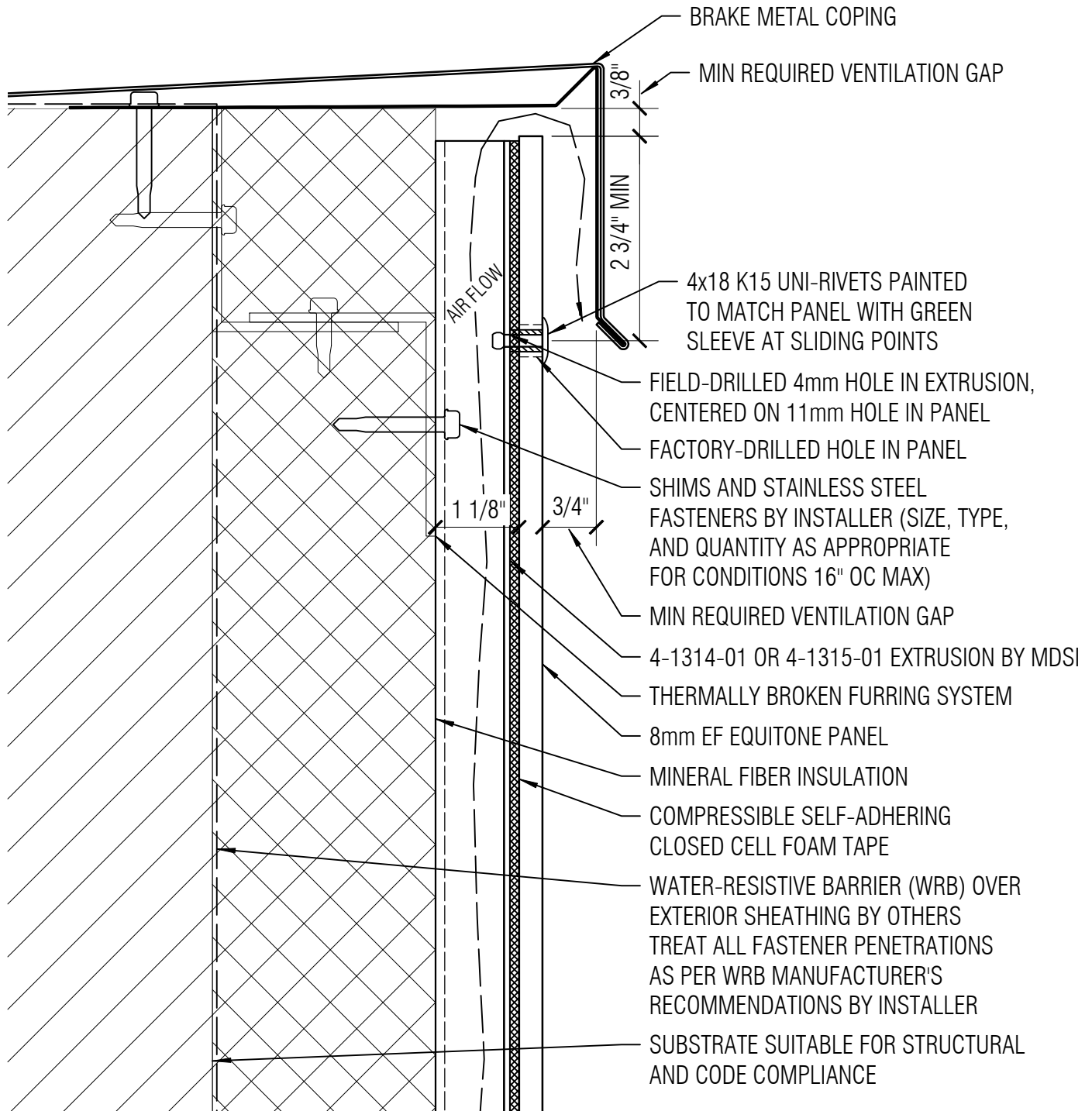


METAL DESIGN SYSTEMS
 103 Chamber Drive
 Anamosa, IA 52205
 Ph. (319) 362-7454
 MATERIAL:
 ...

PROJECT: EQUITONE EXPOSED FASTENER - CI - 8mm MATERIAL		
PROJECT NUMBER: ...	DRAWING NUMBER: EFC103	SCALE: 6" = 1'-0"
DRAWING DESCRIPTION: GRADE TERMINATION DETAIL		
DRAWN BY: ...	DATE: 01/22/2024	

NOTE: EQUITONE IS CONSIDERED NON-COMBUSTIBLE PER ASTM E136, BUT IF NFPA-285 COMPLIANCE IS REQUIRED ON A PROJECT DUE TO OTHER COMPONENTS PRESENT IN THE WALL ASSEMBLY, ADDITIONAL INFORMATION AND DIRECT TECHNICAL ASSISTANCE IS READILY AVAILABLE UPON REQUEST.

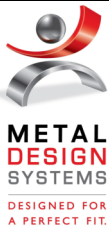
NOTE:
AIR/MOISTURE BARRIER
INSTALLER MUST PROVIDE
WEATHER TIGHT SEAL AT ALL
BARRIER TERMINATIONS



T:\Company Shared\Folders\Tech\System\Info\Equitone\System Details - Equitone.3dm page 32 of 54 printed 1/24/2024 6:06 last saved 1/24/2024 5:54

THE INFORMATION CONTAINED IN THIS DRAWING IS THE SOLE PROPERTY OF METAL DESIGN SYSTEMS INC.

ANY REPRODUCTION, IN PART OR WHOLE, WITHOUT THE WRITTEN PERMISSION OF METAL DESIGN SYSTEMS INC. IS PROHIBITED.



METAL DESIGN SYSTEMS

103 Chamber Drive
Anamosa, IA 52205
Ph. (319) 362-7454

MATERIAL:
...

PROJECT:

EQUITONE EXPOSED FASTENER - CI - 8mm MATERIAL

PROJECT NUMBER:

...

DRAWING NUMBER:

EFC104

SCALE:

6" = 1'-0"

DRAWING DESCRIPTION:

COPING TERMINATION DETAIL

DRAWN BY:

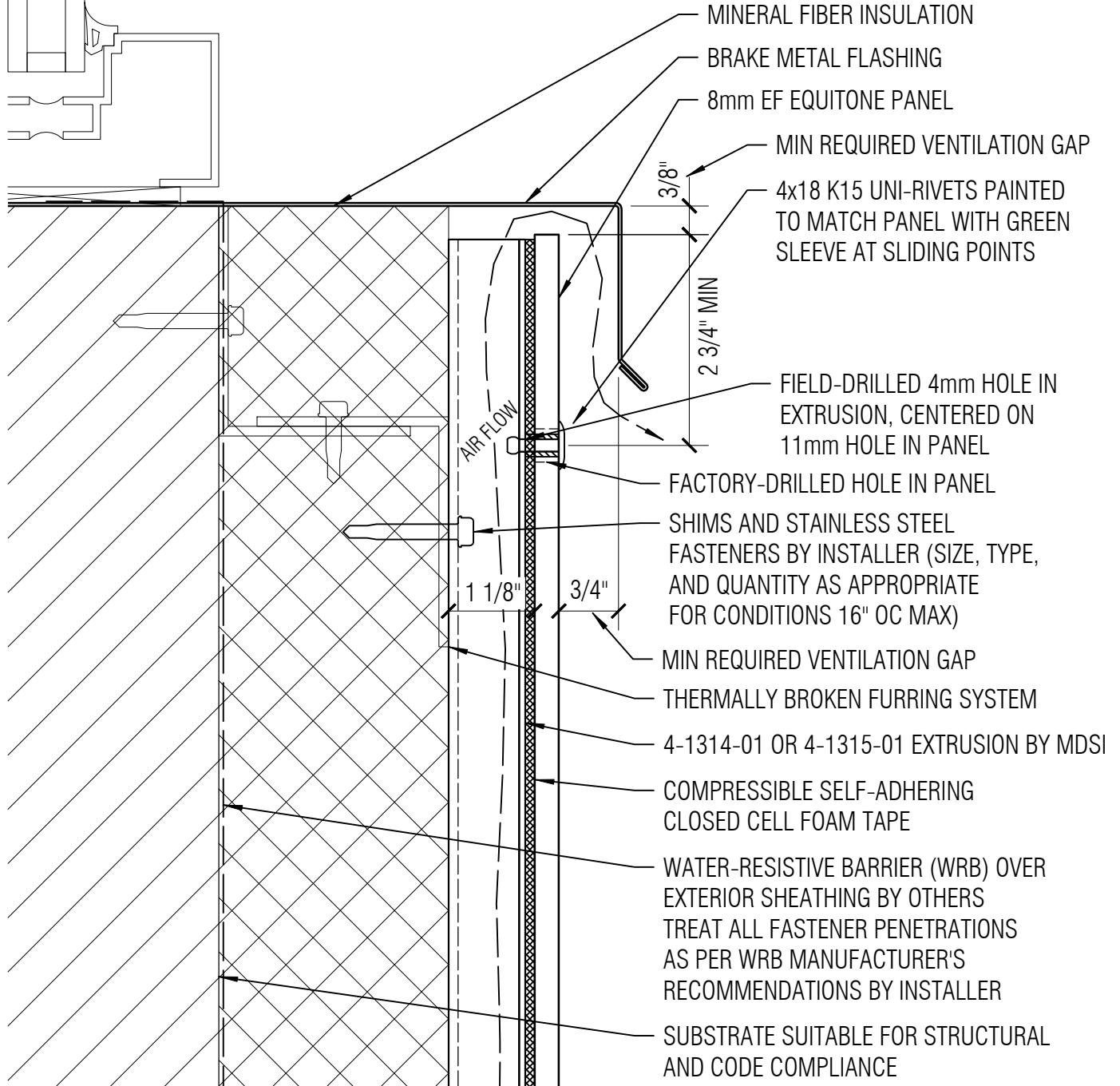
...

DATE:

01/22/2024

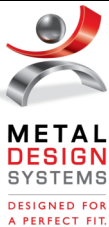
NOTE: EQUITONE IS CONSIDERED NON-COMBUSTIBLE PER ASTM E136, BUT IF NFPA-285 COMPLIANCE IS REQUIRED ON A PROJECT DUE TO OTHER COMPONENTS PRESENT IN THE WALL ASSEMBLY, ADDITIONAL INFORMATION AND DIRECT TECHNICAL ASSISTANCE IS READILY AVAILABLE UPON REQUEST.

NOTE:
AIR/MOISTURE BARRIER
INSTALLER MUST PROVIDE
WEATHER TIGHT SEAL AT ALL
BARRIER TERMINATIONS



THE INFORMATION CONTAINED IN THIS DRAWING IS THE SOLE PROPERTY OF METAL DESIGN SYSTEMS INC.

ANY REPRODUCTION, IN PART OR WHOLE, WITHOUT THE WRITTEN PERMISSION OF METAL DESIGN SYSTEMS INC. IS PROHIBITED.



METAL DESIGN SYSTEMS

103 Chamber Drive
Anamosa, IA 52205
Ph. (319) 362-7454

MATERIAL:
...

PROJECT:

EQUITONE EXPOSED FASTENER - CI - 8mm MATERIAL

PROJECT NUMBER:

...

DRAWING NUMBER:

EFC105

SCALE:

6" = 1'-0"

DRAWING DESCRIPTION:

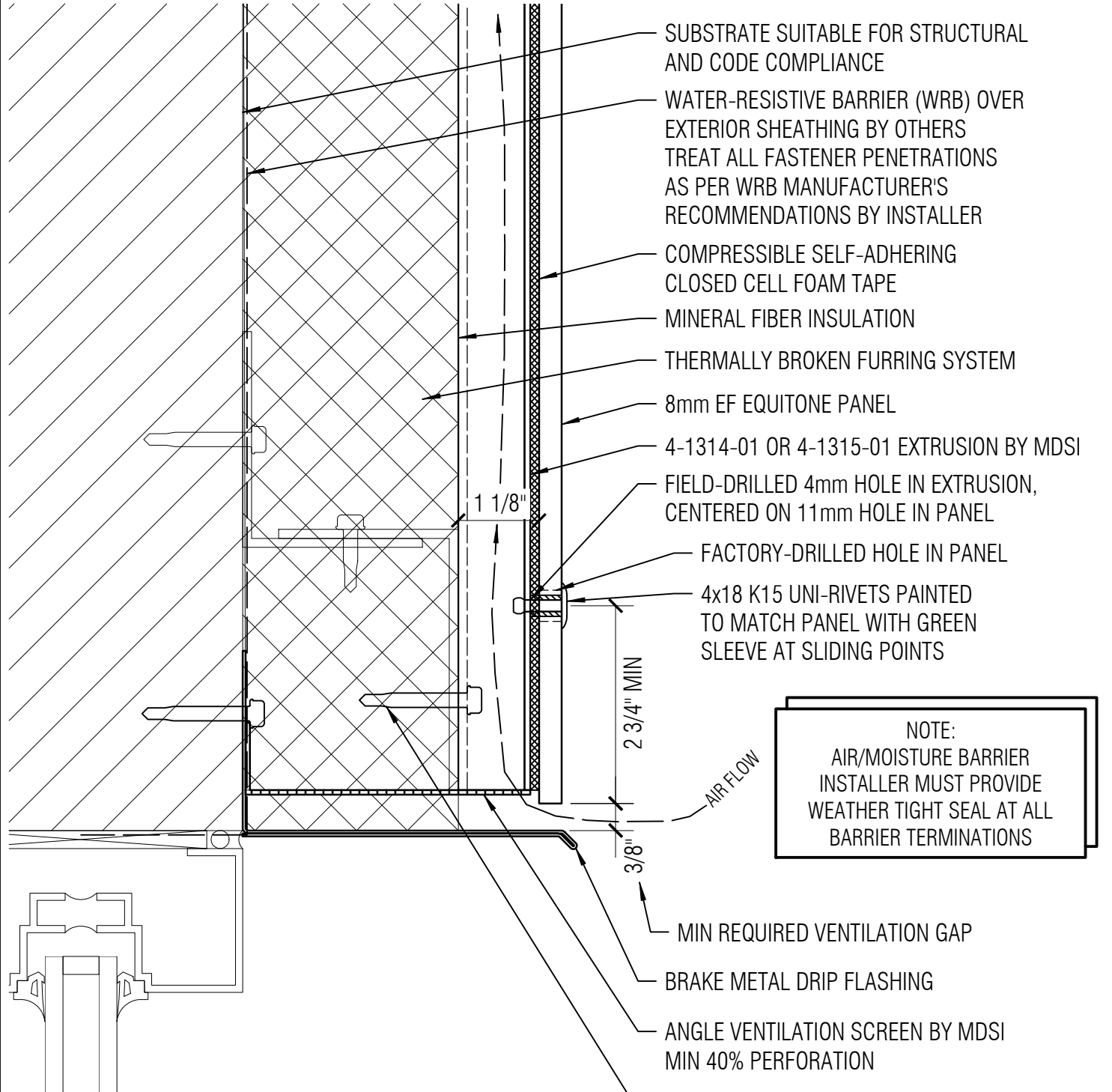
SILL TERMINATION DETAIL

DRAWN BY:

...

DATE:

01/22/2024



- SUBSTRATE SUITABLE FOR STRUCTURAL AND CODE COMPLIANCE
- WATER-RESISTIVE BARRIER (WRB) OVER EXTERIOR SHEATHING BY OTHERS TREAT ALL FASTENER PENETRATIONS AS PER WRB MANUFACTURER'S RECOMMENDATIONS BY INSTALLER
- COMPRESSIBLE SELF-ADHERING CLOSED CELL FOAM TAPE
- MINERAL FIBER INSULATION
- THERMALLY BROKEN FURRING SYSTEM
- 8mm EF EQUITONE PANEL
- 4-1314-01 OR 4-1315-01 EXTRUSION BY MDSI
- FIELD-DRILLED 4mm HOLE IN EXTRUSION, CENTERED ON 11mm HOLE IN PANEL
- FACTORY-DRILLED HOLE IN PANEL
- 4x18 K15 UNI-RIVETS PAINTED TO MATCH PANEL WITH GREEN SLEEVE AT SLIDING POINTS

NOTE:
AIR/MOISTURE BARRIER
INSTALLER MUST PROVIDE
WEATHER TIGHT SEAL AT ALL
BARRIER TERMINATIONS

NOTE: EQUITONE IS CONSIDERED NON-COMBUSTIBLE PER ASTM E136, BUT IF NFPA-285 COMPLIANCE IS REQUIRED ON A PROJECT DUE TO OTHER COMPONENTS PRESENT IN THE WALL ASSEMBLY, ADDITIONAL INFORMATION AND DIRECT TECHNICAL ASSISTANCE IS READILY AVAILABLE UPON REQUEST.

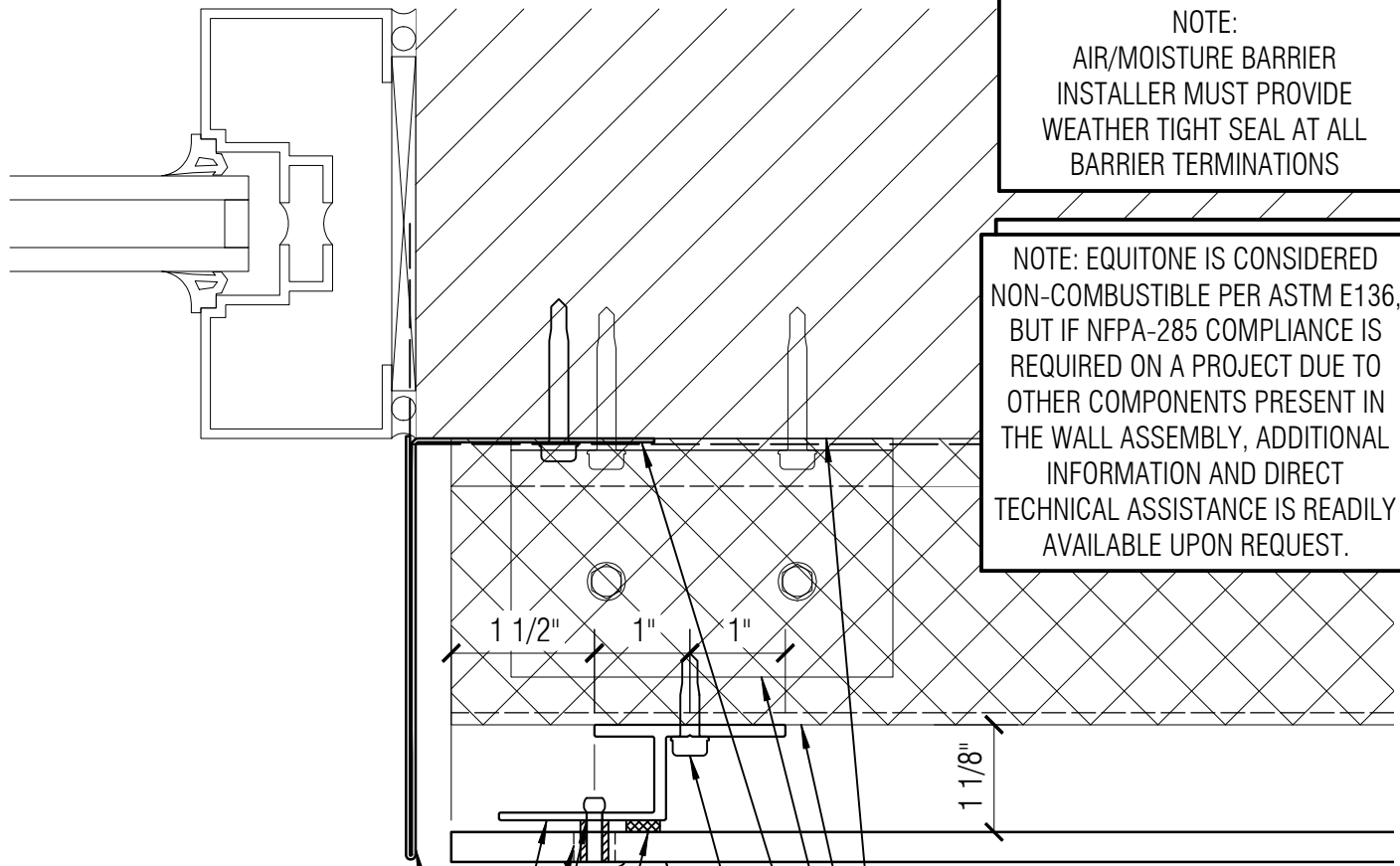
- AIR FLOW
- MIN REQUIRED VENTILATION GAP
- BRAKE METAL DRIP FLASHING
- ANGLE VENTILATION SCREEN BY MDSI MIN 40% PERFORATION
- SHIMS AND STAINLESS STEEL FASTENERS BY INSTALLER (SIZE, TYPE, AND QUANTITY AS APPROPRIATE FOR CONDITIONS 16" OC MAX)

THE INFORMATION CONTAINED IN THIS DRAWING IS THE SOLE PROPERTY OF METAL DESIGN SYSTEMS INC.
ANY REPRODUCTION, IN PART OR WHOLE, WITHOUT THE WRITTEN PERMISSION OF METAL DESIGN SYSTEMS INC. IS PROHIBITED.



METAL DESIGN SYSTEMS
103 Chamber Drive
Anamosa, IA 52205
Ph. (319) 362-7454
MATERIAL:
...

PROJECT: EQUITONE EXPOSED FASTENER - CI - 8mm MATERIAL		
PROJECT NUMBER: ...	DRAWING NUMBER: EFC106	SCALE: 6" = 1'-0"
DRAWING DESCRIPTION: WINDOW HEAD TERMINATION DETAIL		
DRAWN BY: ...	DATE: 01/22/2024	



NOTE:
AIR/MOISTURE BARRIER
INSTALLER MUST PROVIDE
WEATHER TIGHT SEAL AT ALL
BARRIER TERMINATIONS

NOTE: EQUITONE IS CONSIDERED
NON-COMBUSTIBLE PER ASTM E136,
BUT IF NFPA-285 COMPLIANCE IS
REQUIRED ON A PROJECT DUE TO
OTHER COMPONENTS PRESENT IN
THE WALL ASSEMBLY, ADDITIONAL
INFORMATION AND DIRECT
TECHNICAL ASSISTANCE IS READILY
AVAILABLE UPON REQUEST.

- 3/8"
- 1 1/2"
- 1"
- 1"
- 1 1/8"
- BRAKE METAL FLASHING
- 4-1315-01 EXTRUSION BY MDSI
- FIELD-DRILLED 4mm HOLE IN EXTRUSION, CENTERED ON 11mm HOLE IN PANEL
- FIELD-DRILLED 4mm HOLE IN EXTRUSION
- 4x18 K15 UNI-RIVETS PAINTED TO MATCH PANEL WITH GREEN SLEEVE AT SLIDING POINTS
- COMPRESSIBLE SELF-ADHERING CLOSED CELL FOAM TAPE
- SUBSTRATE SUITABLE FOR STRUCTURAL AND CODE COMPLIANCE
- MINERAL FIBER INSULATION
- THERMALLY BROKEN FURRING SYSTEM
- WATER-RESISTIVE BARRIER (WRB) OVER EXTERIOR SHEATHING BY OTHERS TREAT ALL FASTENER PENETRATIONS AS PER WRB MANUFACTURER'S RECOMMENDATIONS BY INSTALLER
- SHIMS AND STAINLESS STEEL FASTENERS BY INSTALLER (SIZE, TYPE, AND QUANTITY AS APPROPRIATE FOR CONDITIONS 16" OC MAX)
- 8mm EF EQUITONE PANEL

THE INFORMATION CONTAINED IN THIS DRAWING IS THE SOLE PROPERTY OF METAL DESIGN SYSTEMS INC.
ANY REPRODUCTION, IN PART OR WHOLE, WITHOUT THE WRITTEN PERMISSION OF METAL DESIGN SYSTEMS INC. IS PROHIBITED.



METAL DESIGN SYSTEMS
103 Chamber Drive
Anamosa, IA 52205
Ph. (319) 362-7454
MATERIAL:
...

PROJECT: EQUITONE EXPOSED FASTENER - CI - 8mm MATERIAL		
PROJECT NUMBER: ...	DRAWING NUMBER: EFCI07	SCALE: 6" = 1'-0"
DRAWING DESCRIPTION: WINDOW/DOOR JAMB DETAIL		
DRAWN BY: ...	DATE: 01/22/2024	

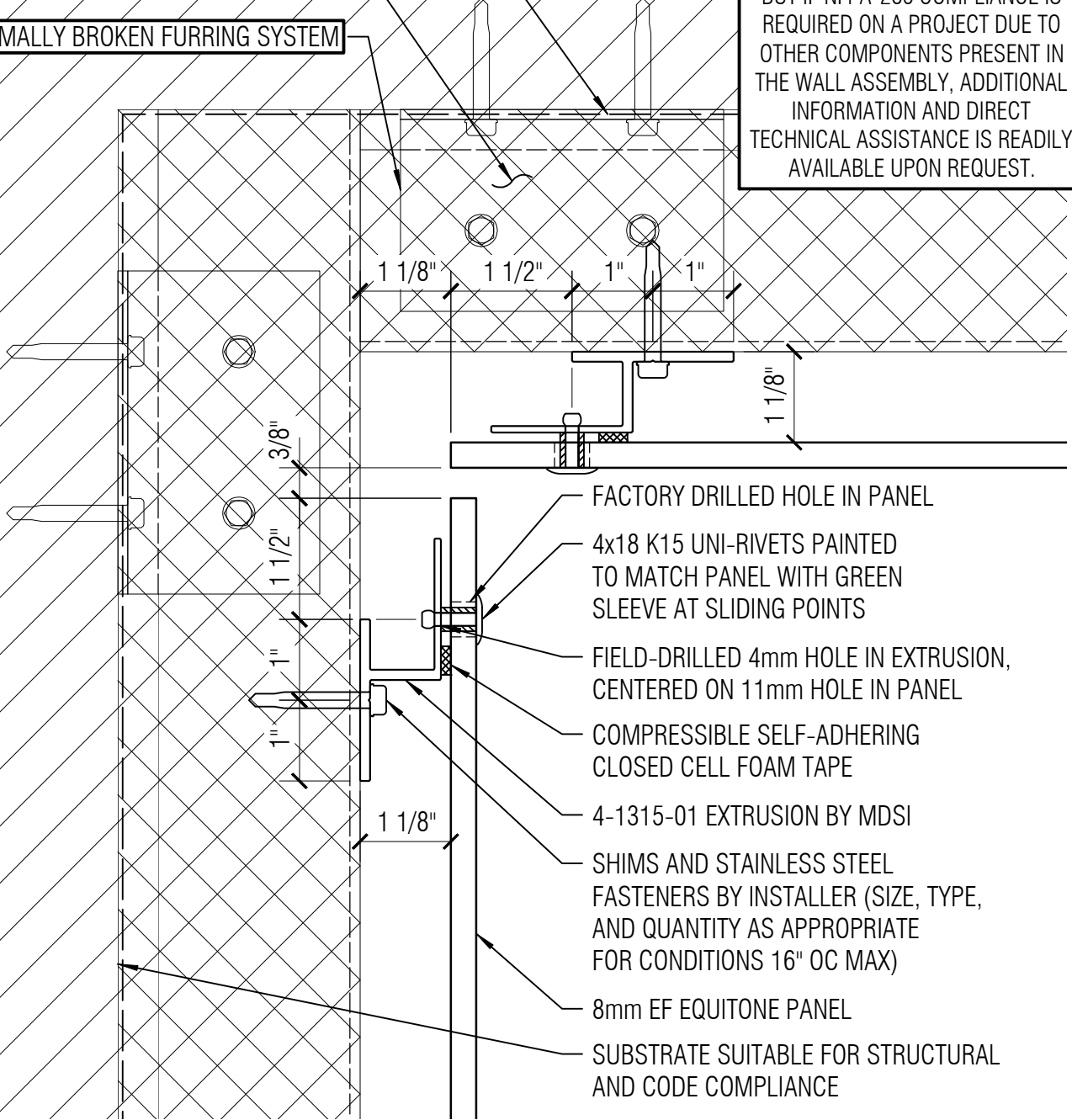
WATER-RESISTIVE BARRIER (WRB) OVER EXTERIOR SHEATHING BY OTHERS
TREAT ALL FASTENER PENETRATIONS AS PER WRB MANUFACTURER'S RECOMMENDATIONS BY INSTALLER

MINERAL FIBER INSULATION

THERMALLY BROKEN FURRING SYSTEM

NOTE:
AIR/MOISTURE BARRIER INSTALLER MUST PROVIDE WEATHER TIGHT SEAL AT ALL BARRIER TERMINATIONS

NOTE: EQUITONE IS CONSIDERED NON-COMBUSTIBLE PER ASTM E136, BUT IF NFPA-285 COMPLIANCE IS REQUIRED ON A PROJECT DUE TO OTHER COMPONENTS PRESENT IN THE WALL ASSEMBLY, ADDITIONAL INFORMATION AND DIRECT TECHNICAL ASSISTANCE IS READILY AVAILABLE UPON REQUEST.



FACTORY DRILLED HOLE IN PANEL

4x18 K15 UNI-RIVETS PAINTED TO MATCH PANEL WITH GREEN SLEEVE AT SLIDING POINTS

FIELD-DRILLED 4mm HOLE IN EXTRUSION, CENTERED ON 11mm HOLE IN PANEL

COMPRESSIBLE SELF-ADHERING CLOSED CELL FOAM TAPE

4-1315-01 EXTRUSION BY MDSI

SHIMS AND STAINLESS STEEL FASTENERS BY INSTALLER (SIZE, TYPE, AND QUANTITY AS APPROPRIATE FOR CONDITIONS 16" OC MAX)

8mm EF EQUITONE PANEL

SUBSTRATE SUITABLE FOR STRUCTURAL AND CODE COMPLIANCE

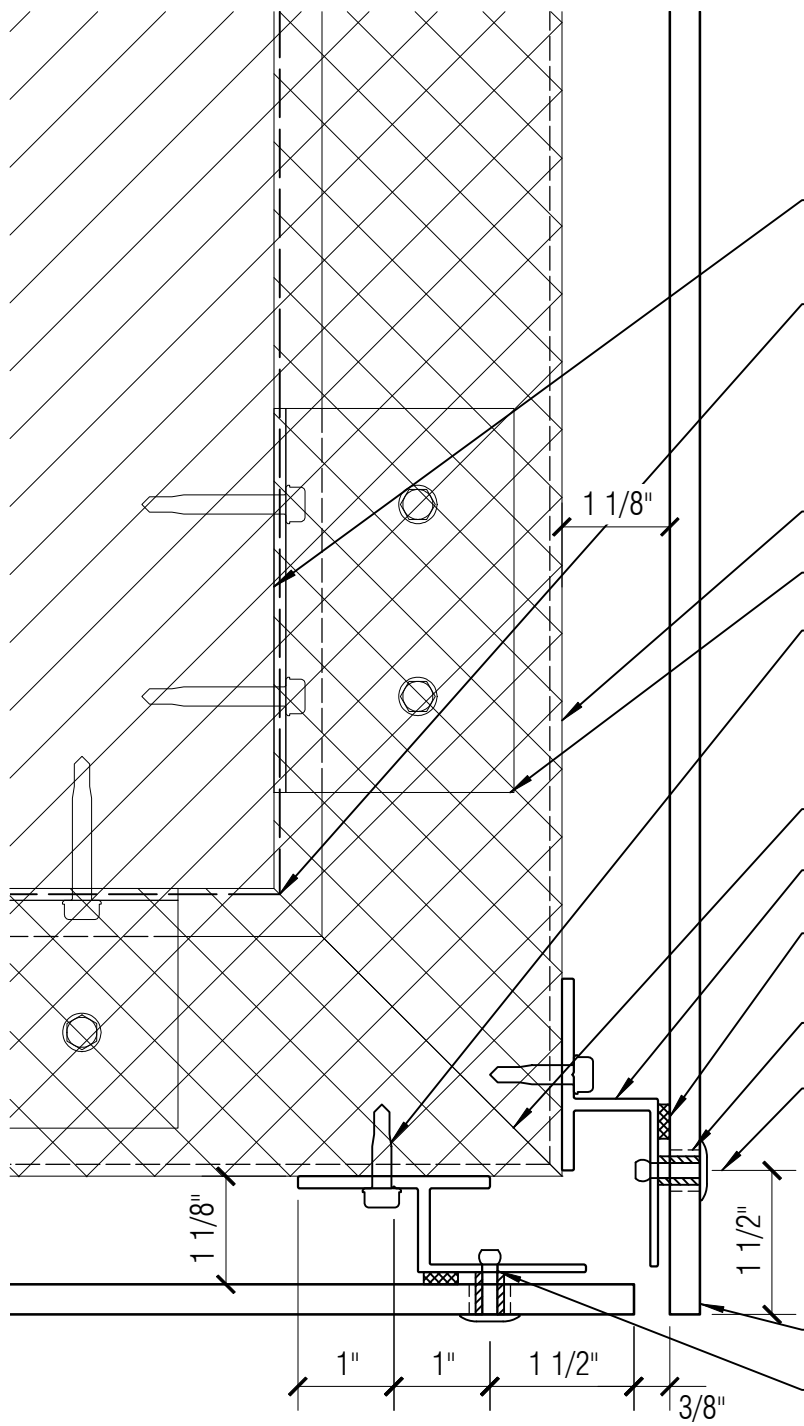
T:\Company Shared\Folders\Tech\System\Info\Equitone\System Details - Equitone.3dm page 36 of 54 printed 1/24/2024 6:06 last saved 1/24/2024 5:54

THE INFORMATION CONTAINED IN THIS DRAWING IS THE SOLE PROPERTY OF METAL DESIGN SYSTEMS INC.
ANY REPRODUCTION, IN PART OR WHOLE, WITHOUT THE WRITTEN PERMISSION OF METAL DESIGN SYSTEMS INC. IS PROHIBITED.



METAL DESIGN SYSTEMS
103 Chamber Drive
Anamosa, IA 52205
Ph. (319) 362-7454
MATERIAL:
...

PROJECT: EQUITONE EXPOSED FASTENER - CI - 8mm MATERIAL		
PROJECT NUMBER: ...	DRAWING NUMBER: EFC108	SCALE: 6" = 1'-0"
DRAWING DESCRIPTION: INSIDE CORNER DETAIL		
DRAWN BY: ...		DATE: 01/22/2024



- SUBSTRATE SUITABLE FOR STRUCTURAL AND CODE COMPLIANCE
- WATER-RESISTIVE BARRIER (WRB) OVER EXTERIOR SHEATHING BY OTHERS
TREAT ALL FASTENER PENETRATIONS AS PER WRB MANUFACTURER'S RECOMMENDATIONS BY INSTALLER
- MINERAL FIBER INSULATION
- THERMALLY BROKEN FURRING SYSTEM
- SHIMS AND STAINLESS STEEL FASTENERS BY INSTALLER (SIZE, TYPE, AND QUANTITY AS APPROPRIATE FOR CONDITIONS 16" OC MAX)
- ALUMINUM CORNER SUPPORT
- 4-1315-01 EXTRUSION BY MDSI
- COMPRESSIBLE SELF-ADHERING CLOSED CELL FOAM TAPE
- FACTORY-DRILLED HOLE IN PANEL
- 4x18 K15 UNI-RIVETS PAINTED TO MATCH PANEL WITH GREEN SLEEVE AT SLIDING POINTS
- 8mm EF EQUITONE PANEL
- FIELD-DRILLED 4mm HOLE IN EXTRUSION, CENTERED ON 11mm HOLE IN PANEL

NOTE:
AIR/MOISTURE BARRIER
INSTALLER MUST PROVIDE
WEATHER TIGHT SEAL AT ALL
BARRIER TERMINATIONS

NOTE: EQUITONE IS CONSIDERED NON-COMBUSTIBLE PER ASTM E136,
BUT IF NFPA-285 COMPLIANCE IS REQUIRED ON A PROJECT DUE TO
OTHER COMPONENTS PRESENT IN THE WALL ASSEMBLY, ADDITIONAL
INFORMATION AND DIRECT TECHNICAL ASSISTANCE IS READILY
AVAILABLE UPON REQUEST.

THE INFORMATION CONTAINED IN THIS
DRAWING IS THE SOLE PROPERTY OF
METAL DESIGN SYSTEMS INC.

ANY REPRODUCTION, IN PART OR WHOLE,
WITHOUT THE WRITTEN PERMISSION OF
METAL DESIGN SYSTEMS INC. IS PROHIBITED.



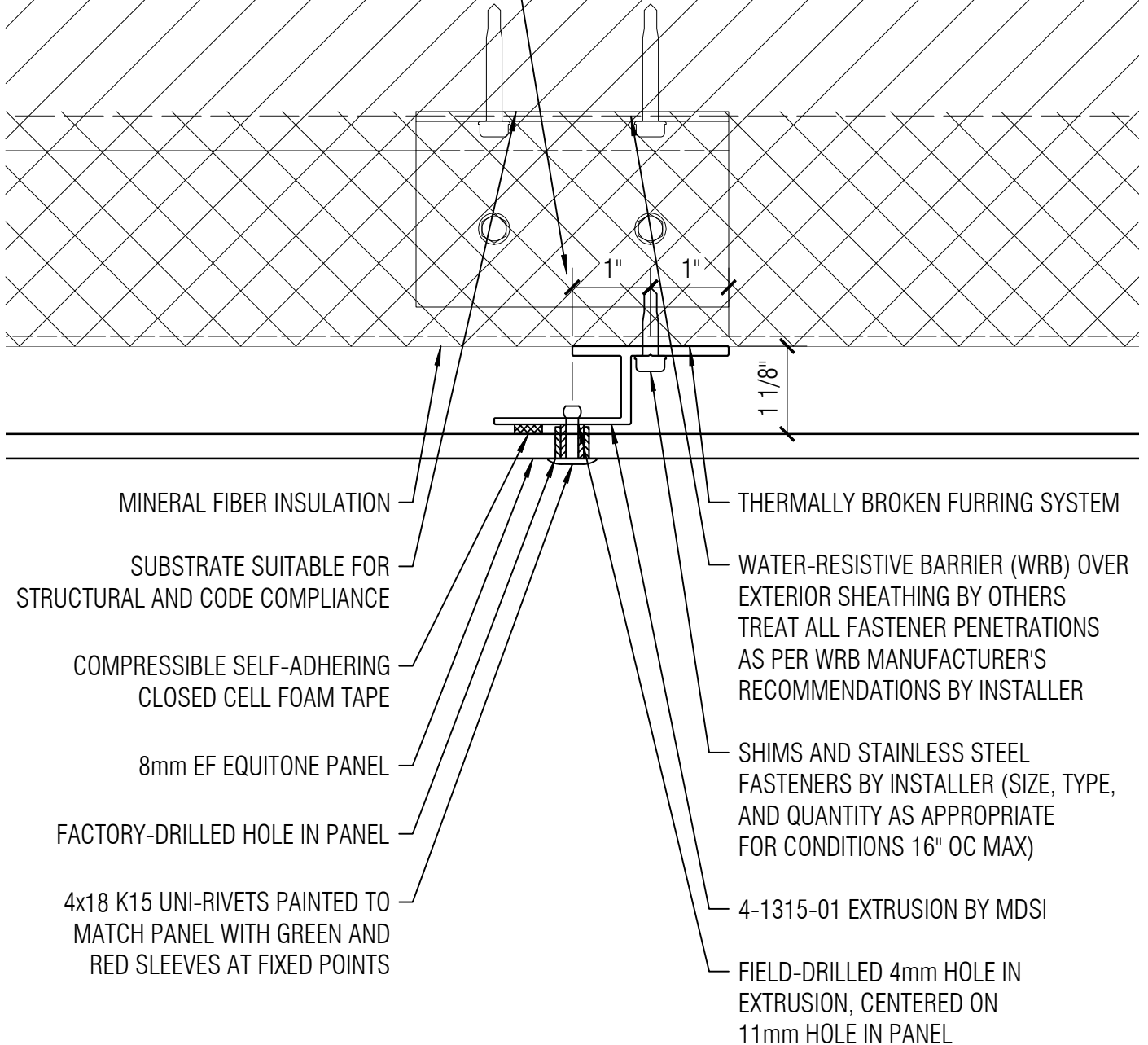
METAL DESIGN SYSTEMS
103 Chamber Drive
Anamosa, IA 52205
Ph. (319) 362-7454
MATERIAL:
...

PROJECT: EQUITONE EXPOSED FASTENER - CI - 8mm MATERIAL		
PROJECT NUMBER: ...	DRAWING NUMBER: EFC109	SCALE: 6" = 1'-0"
DRAWING DESCRIPTION: OUTSIDE CORNER DETAIL		
DRAWN BY: ...	DATE: 01/22/2024	

NOTE: EQUITONE IS CONSIDERED NON-COMBUSTIBLE PER ASTM E136, BUT IF NFPA-285 COMPLIANCE IS REQUIRED ON A PROJECT DUE TO OTHER COMPONENTS PRESENT IN THE WALL ASSEMBLY, ADDITIONAL INFORMATION AND DIRECT TECHNICAL ASSISTANCE IS READILY AVAILABLE UPON REQUEST.

NOTE:
AIR/MOISTURE BARRIER
INSTALLER MUST PROVIDE
WEATHER TIGHT SEAL AT ALL
BARRIER TERMINATIONS

EOE CENTERED ON PANEL HOLES



MINERAL FIBER INSULATION

SUBSTRATE SUITABLE FOR
STRUCTURAL AND CODE COMPLIANCE

COMPRESSIBLE SELF-ADHERING
CLOSED CELL FOAM TAPE

8mm EF EQUITONE PANEL

FACTORY-DRILLED HOLE IN PANEL

4x18 K15 UNI-RIVETS PAINTED TO
MATCH PANEL WITH GREEN AND
RED SLEEVES AT FIXED POINTS

THERMALLY BROKEN FURRING SYSTEM

WATER-RESISTIVE BARRIER (WRB) OVER
EXTERIOR SHEATHING BY OTHERS
TREAT ALL FASTENER PENETRATIONS
AS PER WRB MANUFACTURER'S
RECOMMENDATIONS BY INSTALLER

SHIMS AND STAINLESS STEEL
FASTENERS BY INSTALLER (SIZE, TYPE,
AND QUANTITY AS APPROPRIATE
FOR CONDITIONS 16" OC MAX)

4-1315-01 EXTRUSION BY MDSI

FIELD-DRILLED 4mm HOLE IN
EXTRUSION, CENTERED ON
11mm HOLE IN PANEL

THE INFORMATION CONTAINED IN THIS
DRAWING IS THE SOLE PROPERTY OF
METAL DESIGN SYSTEMS INC.

ANY REPRODUCTION, IN PART OR WHOLE,
WITHOUT THE WRITTEN PERMISSION OF
METAL DESIGN SYSTEMS INC. IS PROHIBITED.



METAL DESIGN SYSTEMS

103 Chamber Drive
Anamosa, IA 52205
Ph. (319) 362-7454

MATERIAL:
...

PROJECT:

EQUITONE EXPOSED FASTENER - CI - 8mm MATERIAL

PROJECT NUMBER:

...

DRAWING NUMBER:

EFC10

SCALE:

6" = 1'-0"

DRAWING DESCRIPTION:

INTERMEDIATE SUPPORT DETAIL

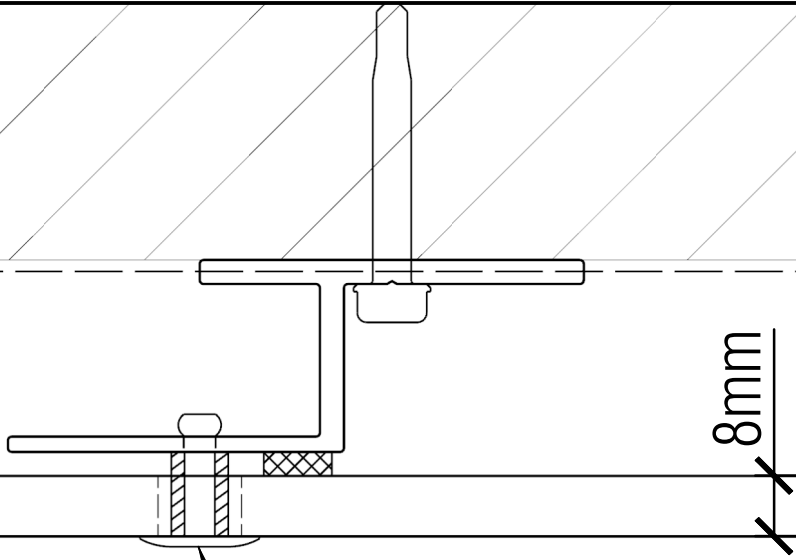
DRAWN BY:

...

DATE:

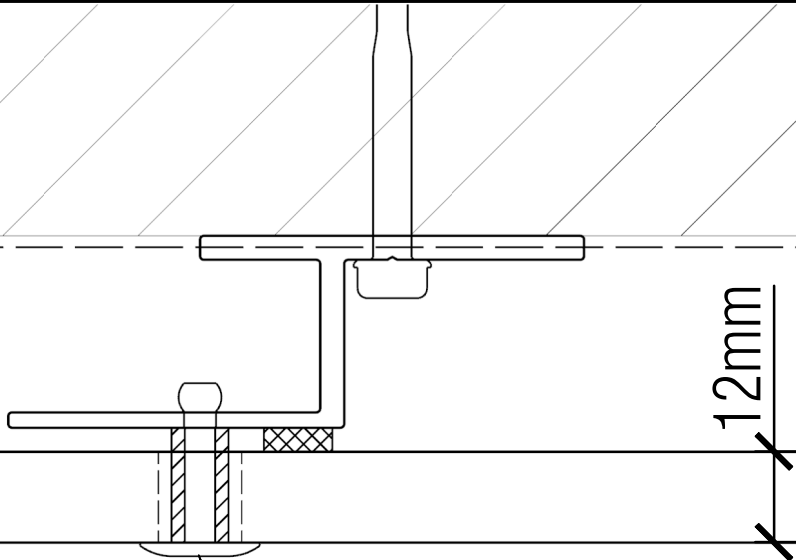
01/22/2024

**RIVETS FOR
8mm PANELS**



4x18 K15 AlMg5 aluminum UNI-rivet
(4x18 K15 A2 (304) stainless steel
UNI-rivet available if needed)

**RIVETS FOR
12mm PANELS**



4x25 K15 AlMg5 aluminum UNI-rivet
(4x22 K15 A2 (304) stainless steel
UNI-rivet available if needed)

T:\Company Shared\Folders\Tech\System Info\Equitone\System Details - Equitone.3dm page 39 of 54 printed 1/24/2024 6:06 last saved 1/24/2024 5:54

THE INFORMATION CONTAINED IN THIS DRAWING IS THE SOLE PROPERTY OF METAL DESIGN SYSTEMS INC.
ANY REPRODUCTION, IN PART OR WHOLE, WITHOUT THE WRITTEN PERMISSION OF METAL DESIGN SYSTEMS INC. IS PROHIBITED.



METAL DESIGN SYSTEMS
103 Chamber Drive
Anamosa, IA 52205
Ph. (319) 362-7454
MATERIAL:
...

PROJECT: EQUITONE EXPOSED FASTENER - 8mm MATERIAL		
PROJECT NUMBER: ...	DRAWING NUMBER: EFC11	SCALE: NTS
DRAWING DESCRIPTION: RIVET SPECIFICATIONS		
DRAWN BY: ...		DATE: 01/22/2024