

# EQUITONE

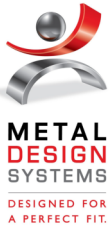
CONCEALED FASTENER  
WITH CONTINUOUS INSULATION  
STANDARD APPLICATION  
12mm MATERIAL

## DRAWING INDEX

CFCI00	COVER SHEET
CFCIPA	DETAIL LAYOUT
CFCI01	HORIZONTAL JOINT DETAIL
CFCI02	VERTICAL JOINT DETAIL
CFCI03	GRADE TERMINATION DETAIL
CFCI04	COPING TERMINATION DETAIL
CFCI05	WINDOW SILL DETAIL
CFCI06	WINDOW HEAD DETAIL
CFCI07	WINDOW JAMB DETAIL
CFCI08	INSIDE CORNER DETAIL
CFCI09	OUTSIDE CORNER DETAIL
CFCI10	4-0017-02 RAIL SPLICE CONDITION
CFCI11	CONCEALED FASTENER SPECS

THE INFORMATION CONTAINED IN THIS DRAWING IS THE SOLE PROPERTY OF METAL DESIGN SYSTEMS INC.

ANY REPRODUCTION, IN PART OR WHOLE, WITHOUT THE WRITTEN PERMISSION OF METAL DESIGN SYSTEMS INC. IS PROHIBITED.



**METAL DESIGN SYSTEMS**

103 Chamber Drive  
Anamosa, IA 52205  
Ph. (319) 362-7454

MATERIAL:  
...

PROJECT:

EQUITONE CONCEALED FASTENER - CI - 12mm MATERIAL

PROJECT NUMBER:

...

DRAWING NUMBER:

CFCI00

SCALE:

...

DRAWING DESCRIPTION:

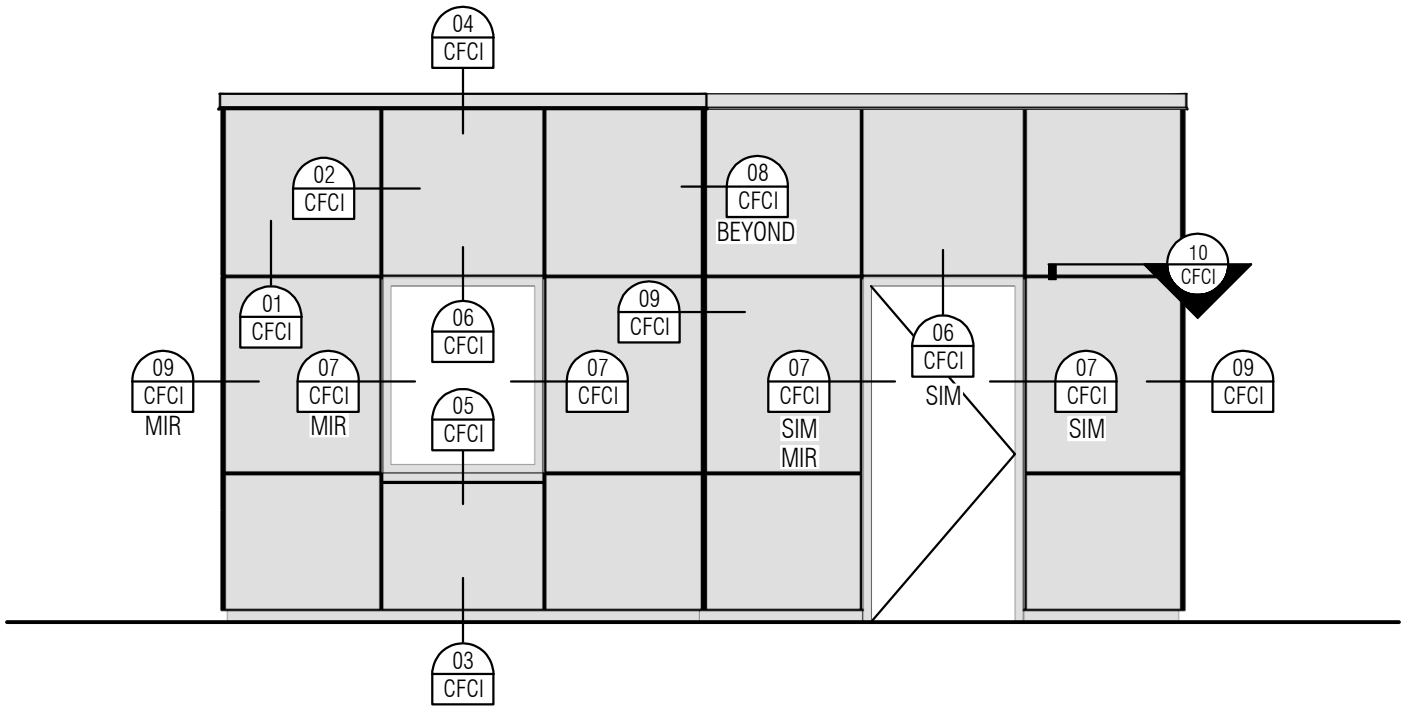
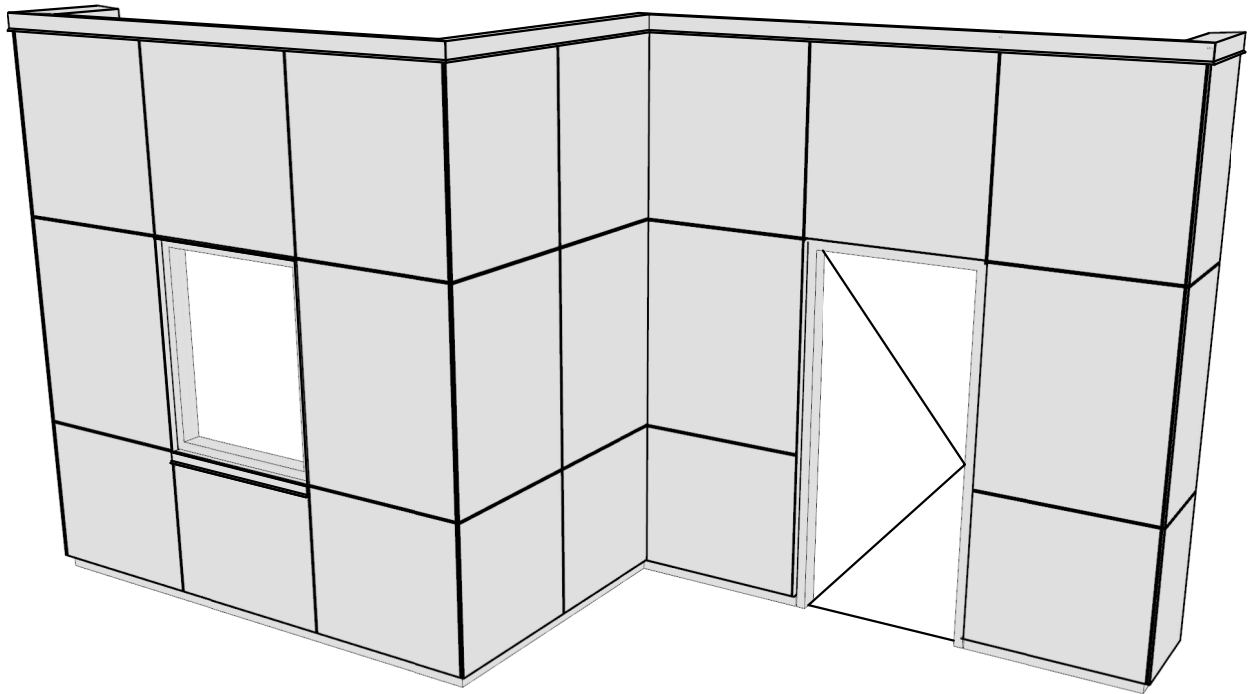
COVER SHEET

DRAWN BY:

...

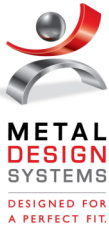
DATE:

01/22/2024



THE INFORMATION CONTAINED IN THIS DRAWING IS THE SOLE PROPERTY OF METAL DESIGN SYSTEMS INC.

ANY REPRODUCTION, IN PART OR WHOLE, WITHOUT THE WRITTEN PERMISSION OF METAL DESIGN SYSTEMS INC. IS PROHIBITED.



**METAL DESIGN SYSTEMS**

103 Chamber Drive  
Anamosa, IA 52205  
Ph. (319) 362-7454

MATERIAL:  
...

PROJECT:

EQUITONE CONCEALED FASTENER - CI - 12mm MATERIAL

PROJECT NUMBER:

...

DRAWING NUMBER:

CFCIPA

SCALE:

NTS

DRAWING DESCRIPTION:

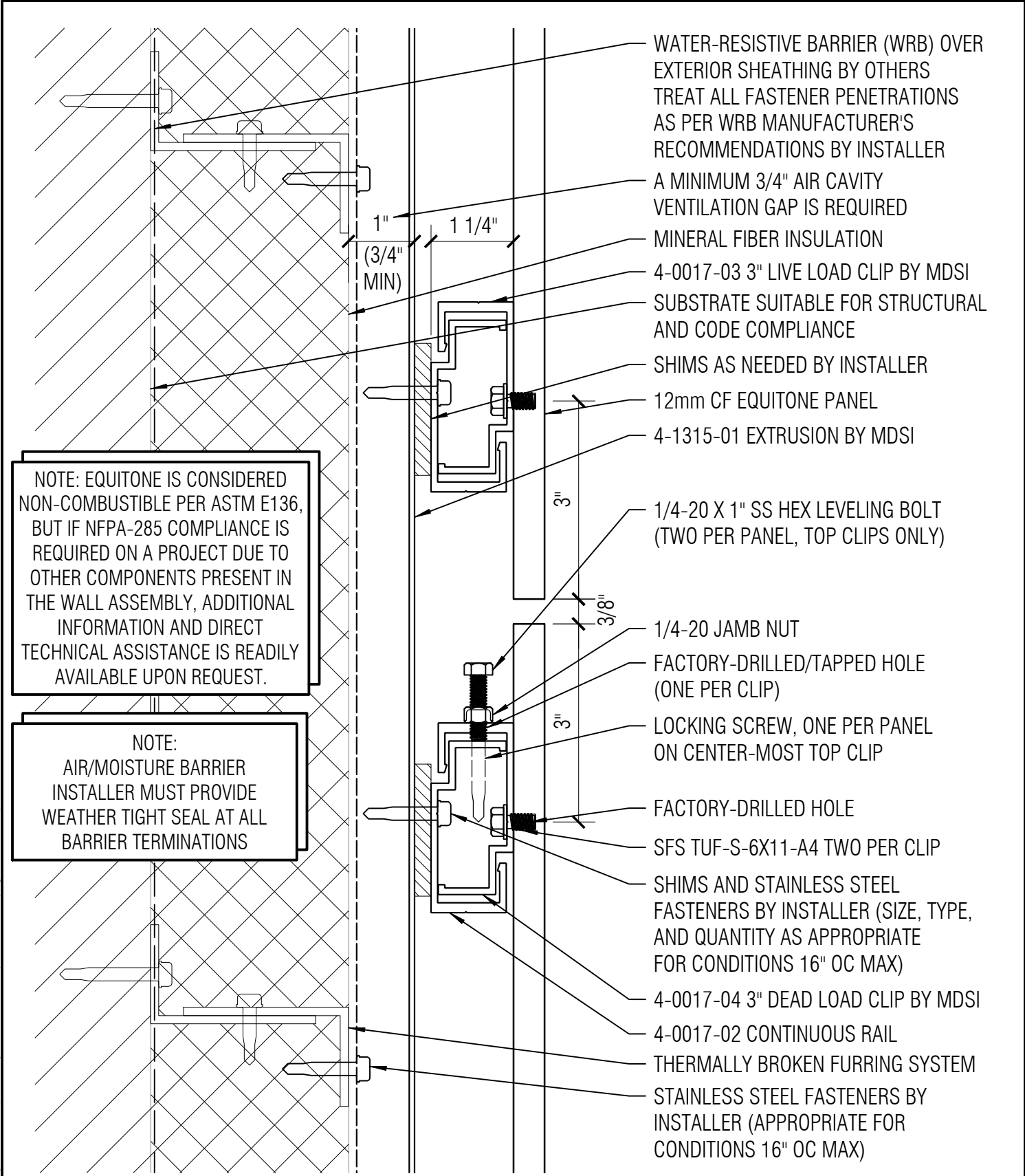
DETAIL LAYOUT

DRAWN BY:

...

DATE:

01/22/2024

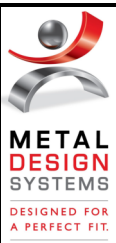


NOTE: EQUISTONE IS CONSIDERED NON-COMBUSTIBLE PER ASTM E136, BUT IF NFPA-285 COMPLIANCE IS REQUIRED ON A PROJECT DUE TO OTHER COMPONENTS PRESENT IN THE WALL ASSEMBLY, ADDITIONAL INFORMATION AND DIRECT TECHNICAL ASSISTANCE IS READILY AVAILABLE UPON REQUEST.

NOTE: AIR/MOISTURE BARRIER INSTALLER MUST PROVIDE WEATHER TIGHT SEAL AT ALL BARRIER TERMINATIONS

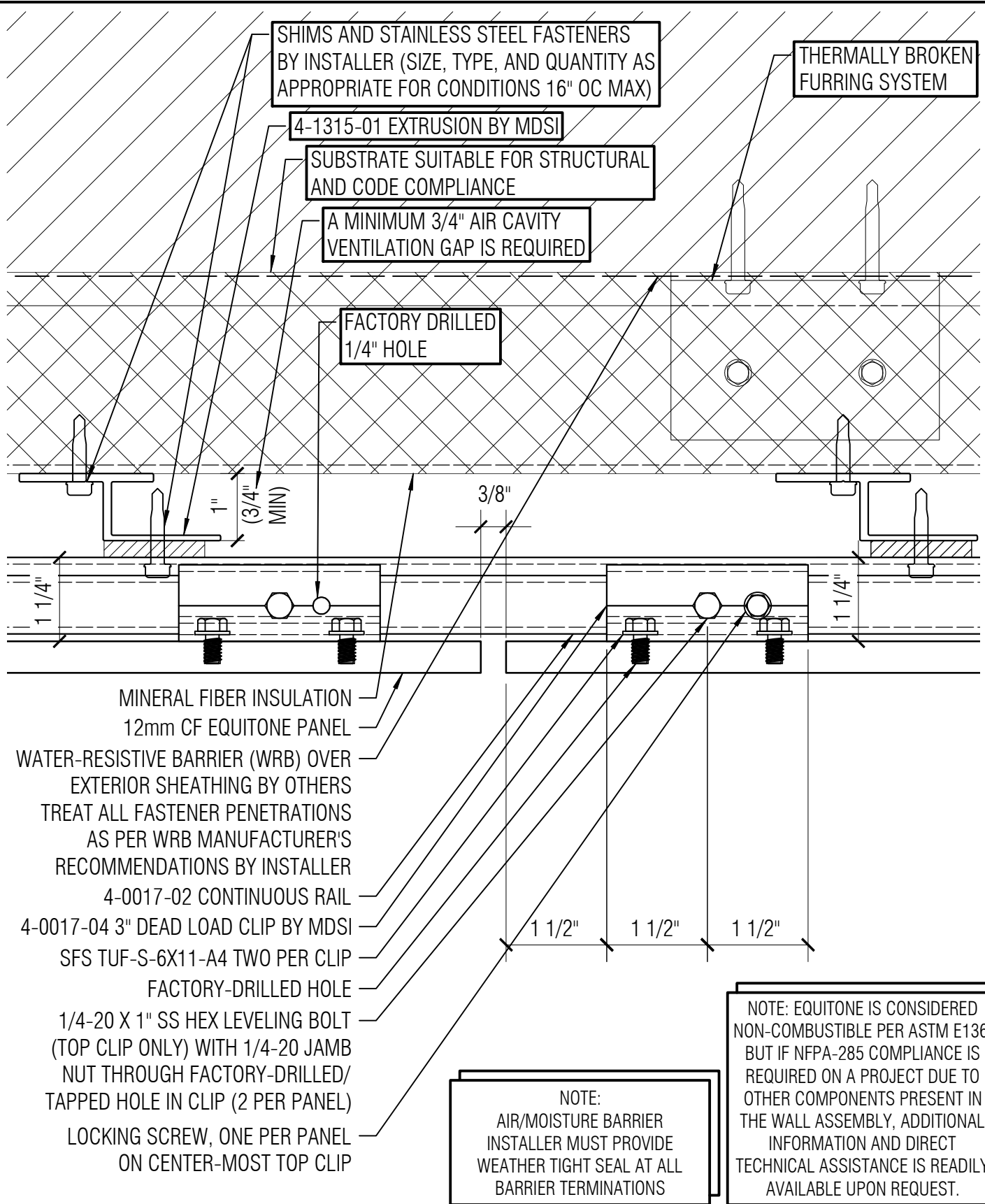
- WATER-RESISTIVE BARRIER (WRB) OVER EXTERIOR SHEATHING BY OTHERS TREAT ALL FASTENER PENETRATIONS AS PER WRB MANUFACTURER'S RECOMMENDATIONS BY INSTALLER
- A MINIMUM 3/4" AIR CAVITY VENTILATION GAP IS REQUIRED
- MINERAL FIBER INSULATION
- 4-0017-03 3" LIVE LOAD CLIP BY MDSI
- SUBSTRATE SUITABLE FOR STRUCTURAL AND CODE COMPLIANCE
- SHIMS AS NEEDED BY INSTALLER
- 12mm CF EQUISTONE PANEL
- 4-1315-01 EXTRUSION BY MDSI
- 1/4-20 X 1" SS HEX LEVELING BOLT (TWO PER PANEL, TOP CLIPS ONLY)
- 1/4-20 JAMB NUT
- FACTORY-DRILLED/TAPPED HOLE (ONE PER CLIP)
- LOCKING SCREW, ONE PER PANEL ON CENTER-MOST TOP CLIP
- FACTORY-DRILLED HOLE
- SFS TUF-S-6X11-A4 TWO PER CLIP
- SHIMS AND STAINLESS STEEL FASTENERS BY INSTALLER (SIZE, TYPE, AND QUANTITY AS APPROPRIATE FOR CONDITIONS 16" OC MAX)
- 4-0017-04 3" DEAD LOAD CLIP BY MDSI
- 4-0017-02 CONTINUOUS RAIL
- THERMALLY BROKEN FURRING SYSTEM
- STAINLESS STEEL FASTENERS BY INSTALLER (APPROPRIATE FOR CONDITIONS 16" OC MAX)

THE INFORMATION CONTAINED IN THIS DRAWING IS THE SOLE PROPERTY OF METAL DESIGN SYSTEMS INC.  
 ANY REPRODUCTION, IN PART OR WHOLE, WITHOUT THE WRITTEN PERMISSION OF METAL DESIGN SYSTEMS INC. IS PROHIBITED.



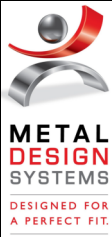
**METAL DESIGN SYSTEMS**  
 103 Chamber Drive  
 Anamosa, IA 52205  
 Ph. (319) 362-7454  
 MATERIAL:  
 ...

PROJECT: EQUITONE CONCEALED FASTENER - CI - 12mm MATERIAL		
PROJECT NUMBER: ...	DRAWING NUMBER: CFCI01	SCALE: 6" = 1'-0"
DRAWING DESCRIPTION: HORIZONTAL JOINT DETAIL		
DRAWN BY: ...	DATE: 01/22/2024	



THE INFORMATION CONTAINED IN THIS DRAWING IS THE SOLE PROPERTY OF METAL DESIGN SYSTEMS INC.

ANY REPRODUCTION, IN PART OR WHOLE, WITHOUT THE WRITTEN PERMISSION OF METAL DESIGN SYSTEMS INC. IS PROHIBITED.

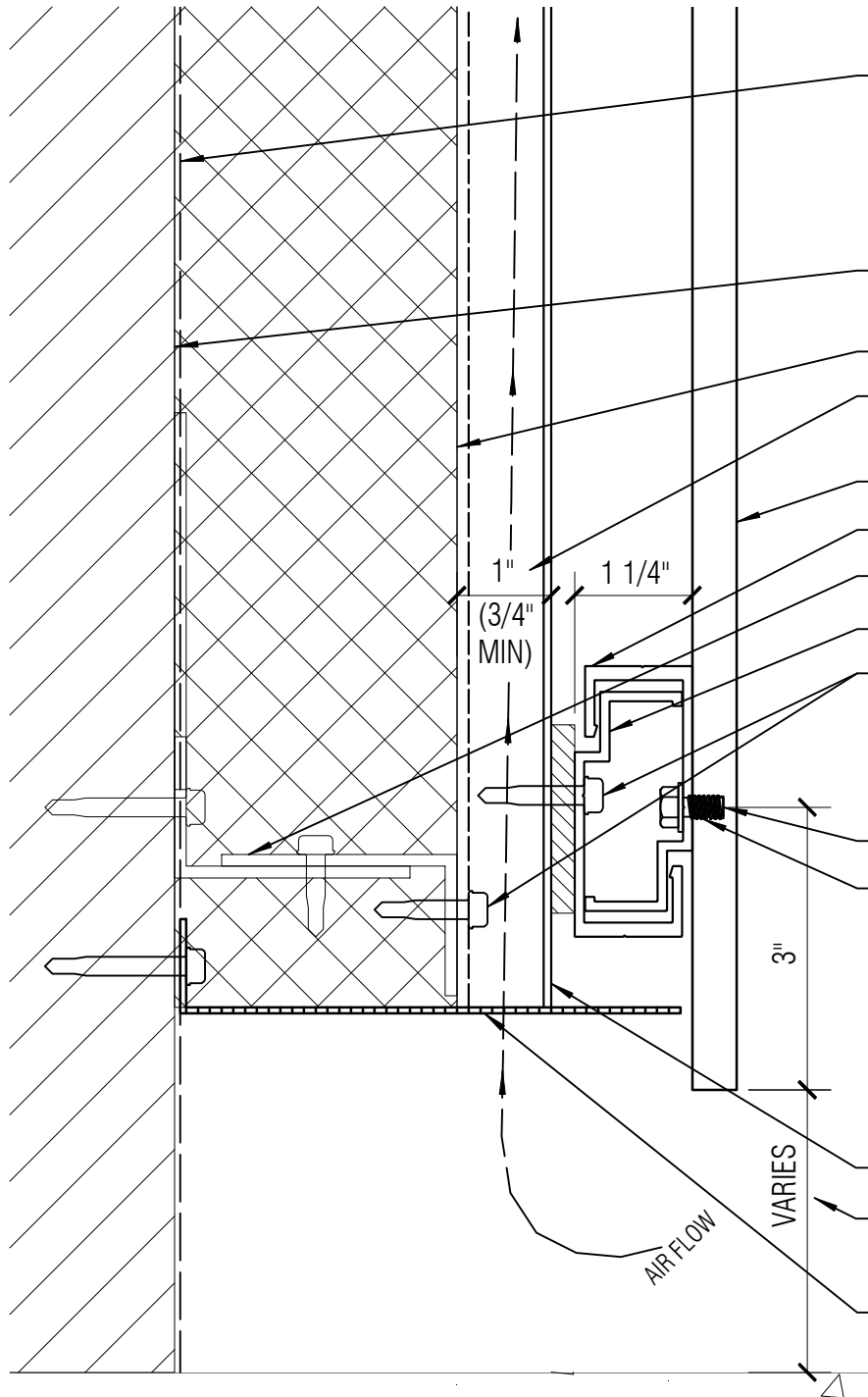


**METAL DESIGN SYSTEMS**

103 Chamber Drive  
Anamosa, IA 52205  
Ph. (319) 362-7454

MATERIAL:  
...

PROJECT: EQUITONE CONCEALED FASTENER - CI - 12mm MATERIAL		
PROJECT NUMBER: ...	DRAWING NUMBER: CFC102	SCALE: 6" = 1'-0"
DRAWING DESCRIPTION: VERTICAL JOINT DETAIL		
DRAWN BY: ...		DATE: 01/22/2024



- WATER-RESISTIVE BARRIER (WRB) OVER EXTERIOR SHEATHING BY OTHERS TREAT ALL FASTENER PENETRATIONS AS PER WRB MANUFACTURER'S RECOMMENDATIONS BY INSTALLER
- SUBSTRATE SUITABLE FOR STRUCTURAL AND CODE COMPLIANCE
- MINERAL FIBER INSULATION
- A MINIMUM 3/4" AIR CAVITY VENTILATION GAP IS REQUIRED
- 12mm CF EQUITONE PANEL
- 4-0017-03 3" LIVE LOAD CLIP BY MDSI
- THERMALLY BROKEN FURRING SYSTEM
- 4-0017-02 CONTINUOUS RAIL
- SHIMS AND STAINLESS STEEL FASTENERS BY INSTALLER (SIZE, TYPE, AND QUANTITY AS APPROPRIATE FOR CONDITIONS 16" OC MAX)
- SFS TUF-S-6X11-A4 TWO PER CLIP
- FACTORY-DRILLED HOLE
- 4-1315-01 EXTRUSION BY MDSI
- 6" MIN IN OPEN AREAS  
3/8" MIN IN COVERED AREAS
- ANGLE VENTILATION SCREEN BY MDSI MIN 40% PERFORATION

NOTE: EQUITONE IS CONSIDERED NON-COMBUSTIBLE PER ASTM E136, BUT IF NFPA-285 COMPLIANCE IS REQUIRED ON A PROJECT DUE TO OTHER COMPONENTS PRESENT IN THE WALL ASSEMBLY, ADDITIONAL INFORMATION AND DIRECT TECHNICAL ASSISTANCE IS READILY AVAILABLE UPON REQUEST.

NOTE: AIR/MOISTURE BARRIER INSTALLER MUST PROVIDE WEATHER TIGHT SEAL AT ALL BARRIER TERMINATIONS

THE INFORMATION CONTAINED IN THIS DRAWING IS THE SOLE PROPERTY OF METAL DESIGN SYSTEMS INC.

ANY REPRODUCTION, IN PART OR WHOLE, WITHOUT THE WRITTEN PERMISSION OF METAL DESIGN SYSTEMS INC. IS PROHIBITED.



**METAL DESIGN SYSTEMS**

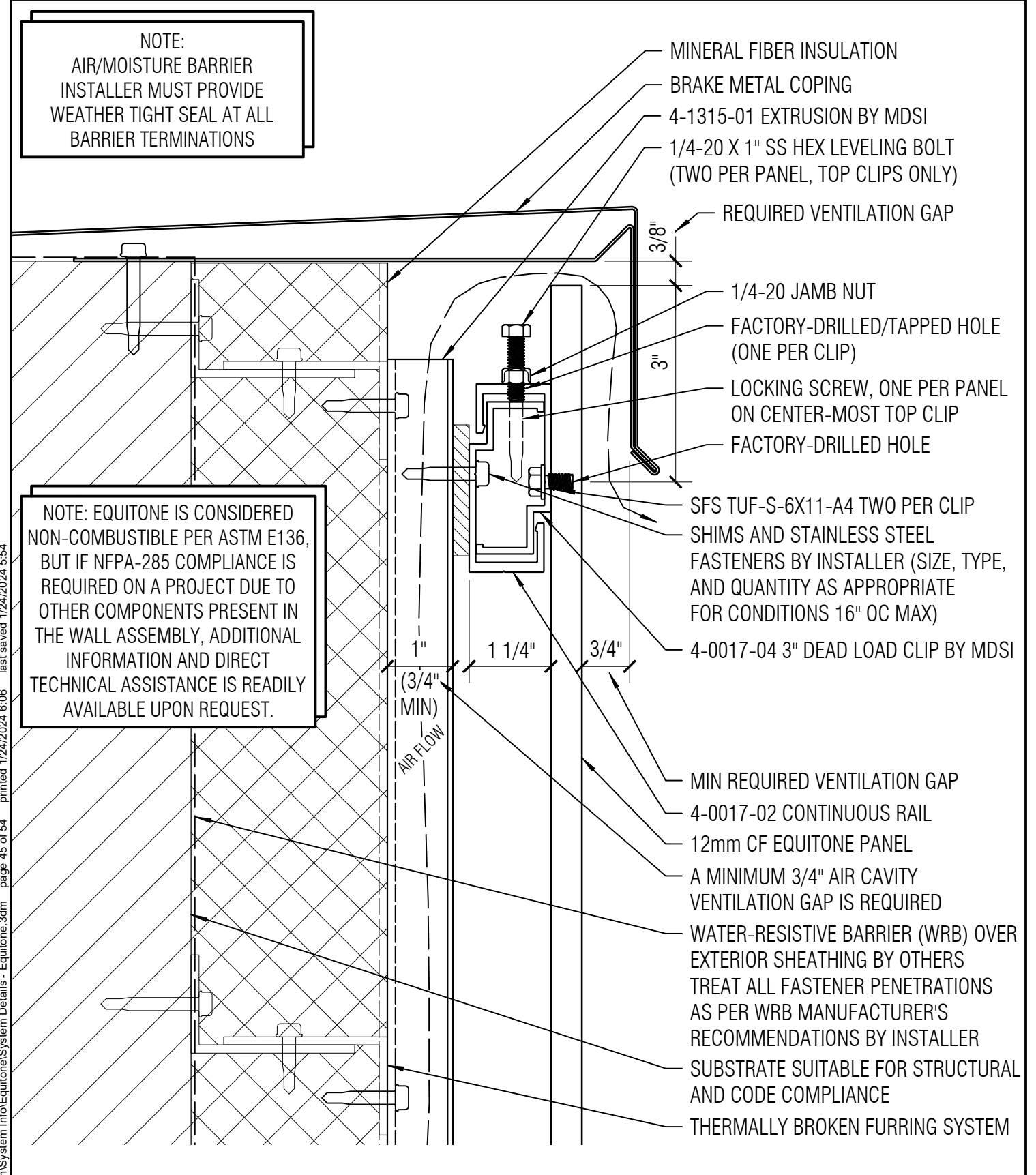
103 Chamber Drive  
Anamosa, IA 52205  
Ph. (319) 362-7454

MATERIAL:  
...

PROJECT: EQUITONE CONCEALED FASTENER - CI - 12mm MATERIAL		
PROJECT NUMBER: ...	DRAWING NUMBER: CFCI03	SCALE: 6" = 1'-0"
DRAWING DESCRIPTION: GRADE TERMINATION DETAIL		
DRAWN BY: ...	DATE: 01/22/2024	

**NOTE:**  
AIR/MOISTURE BARRIER  
INSTALLER MUST PROVIDE  
WEATHER TIGHT SEAL AT ALL  
BARRIER TERMINATIONS

**NOTE:** EQUITONE IS CONSIDERED  
NON-COMBUSTIBLE PER ASTM E136,  
BUT IF NFPA-285 COMPLIANCE IS  
REQUIRED ON A PROJECT DUE TO  
OTHER COMPONENTS PRESENT IN  
THE WALL ASSEMBLY, ADDITIONAL  
INFORMATION AND DIRECT  
TECHNICAL ASSISTANCE IS READILY  
AVAILABLE UPON REQUEST.



- MINERAL FIBER INSULATION
- BRAKE METAL COPING
- 4-1315-01 EXTRUSION BY MDSI
- 1/4-20 X 1" SS HEX LEVELING BOLT (TWO PER PANEL, TOP CLIPS ONLY)
- REQUIRED VENTILATION GAP
- 3/8"
- 1/4-20 JAMB NUT
- FACTORY-DRILLED/TAPPED HOLE (ONE PER CLIP)
- LOCKING SCREW, ONE PER PANEL ON CENTER-MOST TOP CLIP
- FACTORY-DRILLED HOLE
- SFS TUF-S-6X11-A4 TWO PER CLIP
- SHIMS AND STAINLESS STEEL FASTENERS BY INSTALLER (SIZE, TYPE, AND QUANTITY AS APPROPRIATE FOR CONDITIONS 16" OC MAX)
- 4-0017-04 3" DEAD LOAD CLIP BY MDSI
- 1"
- 1 1/4"
- 3/4"
- (3/4" MIN)
- AIR FLOW
- MIN REQUIRED VENTILATION GAP
- 4-0017-02 CONTINUOUS RAIL
- 12mm CF EQUITONE PANEL
- A MINIMUM 3/4" AIR CAVITY VENTILATION GAP IS REQUIRED
- WATER-RESISTIVE BARRIER (WRB) OVER EXTERIOR SHEATHING BY OTHERS TREAT ALL FASTENER PENETRATIONS AS PER WRB MANUFACTURER'S RECOMMENDATIONS BY INSTALLER
- SUBSTRATE SUITABLE FOR STRUCTURAL AND CODE COMPLIANCE
- THERMALLY BROKEN FURRING SYSTEM

T:\Company Shared\Folders\Tech\System\Info\Equitone\System Details - Equitone.3dm page 45 of 54 printed 1/24/2024 6:06 last saved 1/24/2024 5:54

THE INFORMATION CONTAINED IN THIS DRAWING IS THE SOLE PROPERTY OF METAL DESIGN SYSTEMS INC.  
ANY REPRODUCTION, IN PART OR WHOLE, WITHOUT THE WRITTEN PERMISSION OF METAL DESIGN SYSTEMS INC. IS PROHIBITED.



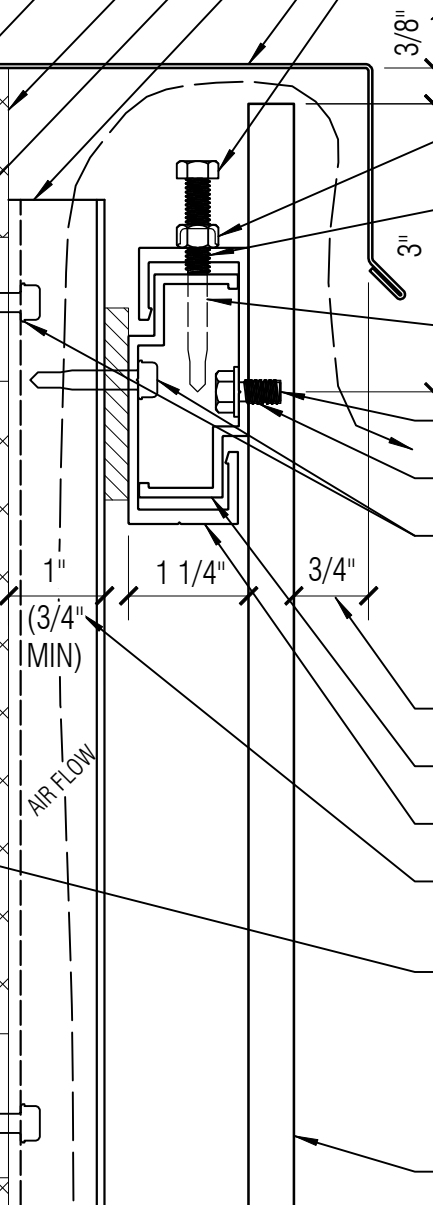
**METAL DESIGN SYSTEMS**  
103 Chamber Drive  
Anamosa, IA 52205  
Ph. (319) 362-7454  
MATERIAL:  
...

PROJECT: EQUITONE CONCEALED FASTENER - CI - 12mm MATERIAL		
PROJECT NUMBER: ...	DRAWING NUMBER: CFC104	SCALE: 6" = 1'-0"
DRAWING DESCRIPTION: COPING TERMINATION DETAIL		
DRAWN BY: ...	DATE: 01/22/2024	

**NOTE:**  
AIR/MOISTURE BARRIER  
INSTALLER MUST PROVIDE  
WEATHER TIGHT SEAL AT ALL  
BARRIER TERMINATIONS

**NOTE:** EQUITONE IS CONSIDERED  
NON-COMBUSTIBLE PER ASTM E136,  
BUT IF NFPA-285 COMPLIANCE IS  
REQUIRED ON A PROJECT DUE TO  
OTHER COMPONENTS PRESENT IN  
THE WALL ASSEMBLY, ADDITIONAL  
INFORMATION AND DIRECT  
TECHNICAL ASSISTANCE IS READILY  
AVAILABLE UPON REQUEST.

- SUBSTRATE SUITABLE FOR STRUCTURAL AND CODE COMPLIANCE
- MINERAL FIBER INSULATION
- THERMALLY BROKEN FURRING SYSTEM
- 4-1315-01 EXTRUSION BY MDSI
- BRAKE METAL SILL FLASHING
- 1/4-20 X 1" SS HEX LEVELING BOLT (TOP CLIP ONLY)
- MIN REQUIRED VENTILATION GAP
- 1/4-20 JAMB NUT
- FACTORY-DRILLED/TAPPED HOLE (ONE PER CLIP)
- LOCKING SCREW, ONE PER PANEL ON CENTER-MOST TOP CLIP
- FACTORY-DRILLED HOLE
- SFS TUF-S-6X11-A4 TWO PER CLIP
- SHIMS AND STAINLESS STEEL FASTENERS BY INSTALLER (SIZE, TYPE, AND QUANTITY AS APPROPRIATE FOR CONDITIONS 16" OC MAX)
- REQUIRED VENTILATION GAP
- 4-0017-04 3" DEAD LOAD CLIP BY MDSI
- 4-0017-02 CONTINUOUS RAIL
- A MINIMUM 3/4" AIR CAVITY VENTILATION GAP IS REQUIRED
- WATER-RESISTIVE BARRIER (WRB) OVER EXTERIOR SHEATHING BY OTHERS TREAT ALL FASTENER PENETRATIONS AS PER WRB MANUFACTURER'S RECOMMENDATIONS BY INSTALLER
- 12mm CF EQUITONE PANEL



T:\Company Shared\Folders\Tech\System\Info\Equitone\System Details - Equitone.3dm page 46 of 54 printed 1/24/2024 6:06 last saved 1/24/2024 5:54

THE INFORMATION CONTAINED IN THIS DRAWING IS THE SOLE PROPERTY OF METAL DESIGN SYSTEMS INC.  
ANY REPRODUCTION, IN PART OR WHOLE, WITHOUT THE WRITTEN PERMISSION OF METAL DESIGN SYSTEMS INC. IS PROHIBITED.



**METAL DESIGN SYSTEMS**  
103 Chamber Drive  
Anamosa, IA 52205  
Ph. (319) 362-7454  
MATERIAL:  
...

PROJECT: EQUITONE CONCEALED FASTENER - CI - 12mm MATERIAL		
PROJECT NUMBER: ...	DRAWING NUMBER: CFC105	SCALE: 6" = 1'-0"
DRAWING DESCRIPTION: WINDOW SILL TERMINATION DETAIL		
DRAWN BY: ...	DATE: 01/22/2024	

NOTE: EQUITONE IS CONSIDERED NON-COMBUSTIBLE PER ASTM E136, BUT IF NFPA-285 COMPLIANCE IS REQUIRED ON A PROJECT DUE TO OTHER COMPONENTS PRESENT IN THE WALL ASSEMBLY, ADDITIONAL INFORMATION AND DIRECT TECHNICAL ASSISTANCE IS READILY AVAILABLE UPON REQUEST.

SUBSTRATE SUITABLE FOR STRUCTURAL AND CODE COMPLIANCE

WATER-RESISTIVE BARRIER (WRB) OVER EXTERIOR SHEATHING BY OTHERS  
TREAT ALL FASTENER PENETRATIONS AS PER WRB MANUFACTURER'S RECOMMENDATIONS BY INSTALLER

MINERAL FIBER INSULATION

THERMALLY BROKEN FURRING SYSTEM

A MINIMUM 3/4" AIR CAVITY VENTILATION GAP IS REQUIRED

4-0017-03 3" LIVE LOAD CLIP BY MDSI

4-0017-02 CONTINUOUS RAIL

12mm CF EQUITONE PANEL

SHIMS AND STAINLESS STEEL FASTENERS BY INSTALLER (SIZE, TYPE, AND QUANTITY AS APPROPRIATE FOR CONDITIONS 16" OC MAX)

SFS TUF-S-6X11-A4 TWO PER CLIP

FACTORY-DRILLED HOLE

3"

AIR FLOW

3/8"

MIN REQUIRED VENTILATION GAP

4-1315-01 EXTRUSION BY MDSI

BRAKE METAL DRIP FLASHING

ANGLE VENTILATION SCREEN BY MDSI  
MIN 40% PERFORATION

SHIMS AND STAINLESS STEEL FASTENERS BY INSTALLER (SIZE, TYPE, AND QUANTITY AS APPROPRIATE FOR CONDITIONS 16" OC MAX)

NOTE:  
AIR/MOISTURE BARRIER  
INSTALLER MUST PROVIDE  
WEATHER TIGHT SEAL AT ALL  
BARRIER TERMINATIONS

THE INFORMATION CONTAINED IN THIS DRAWING IS THE SOLE PROPERTY OF METAL DESIGN SYSTEMS INC.

ANY REPRODUCTION, IN PART OR WHOLE, WITHOUT THE WRITTEN PERMISSION OF METAL DESIGN SYSTEMS INC. IS PROHIBITED.



**METAL DESIGN SYSTEMS**

103 Chamber Drive  
Anamosa, IA 52205  
Ph. (319) 362-7454

MATERIAL:

...

PROJECT:

EQUITONE CONCEALED FASTENER - CI - 12mm MATERIAL

PROJECT NUMBER:

...

DRAWING NUMBER:

CFC106

SCALE:

6" = 1'-0"

DRAWING DESCRIPTION:

WINDOW HEAD TERMINATION DETAIL

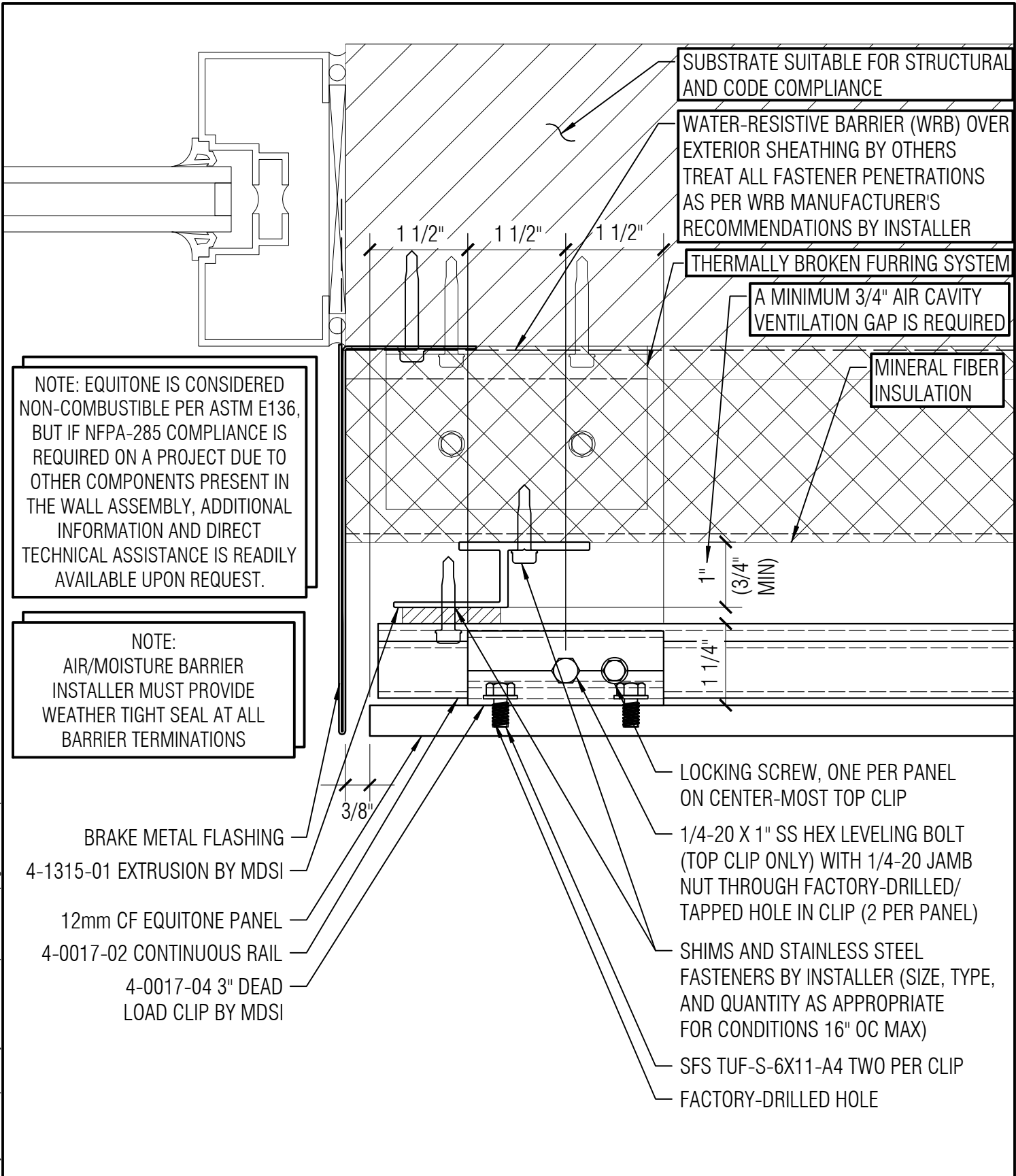
DRAWN BY:

...

DATE:

01/22/2024





NOTE: EQUITONE IS CONSIDERED NON-COMBUSTIBLE PER ASTM E136, BUT IF NFPA-285 COMPLIANCE IS REQUIRED ON A PROJECT DUE TO OTHER COMPONENTS PRESENT IN THE WALL ASSEMBLY, ADDITIONAL INFORMATION AND DIRECT TECHNICAL ASSISTANCE IS READILY AVAILABLE UPON REQUEST.

NOTE: AIR/MOISTURE BARRIER INSTALLER MUST PROVIDE WEATHER TIGHT SEAL AT ALL BARRIER TERMINATIONS

- BRAKE METAL FLASHING
- 4-1315-01 EXTRUSION BY MDSI
- 12mm CF EQUITONE PANEL
- 4-0017-02 CONTINUOUS RAIL
- 4-0017-04 3" DEAD LOAD CLIP BY MDSI

- SUBSTRATE SUITABLE FOR STRUCTURAL AND CODE COMPLIANCE
- WATER-RESISTIVE BARRIER (WRB) OVER EXTERIOR SHEATHING BY OTHERS TREAT ALL FASTENER PENETRATIONS AS PER WRB MANUFACTURER'S RECOMMENDATIONS BY INSTALLER
- THERMALLY BROKEN FURRING SYSTEM
- A MINIMUM 3/4" AIR CAVITY VENTILATION GAP IS REQUIRED
- MINERAL FIBER INSULATION
- LOCKING SCREW, ONE PER PANEL ON CENTER-MOST TOP CLIP
- 1/4-20 X 1" SS HEX LEVELING BOLT (TOP CLIP ONLY) WITH 1/4-20 JAMB NUT THROUGH FACTORY-DRILLED/ TAPPED HOLE IN CLIP (2 PER PANEL)
- SHIMS AND STAINLESS STEEL FASTENERS BY INSTALLER (SIZE, TYPE, AND QUANTITY AS APPROPRIATE FOR CONDITIONS 16" OC MAX)
- SFS TUF-S-6X11-A4 TWO PER CLIP
- FACTORY-DRILLED HOLE

THE INFORMATION CONTAINED IN THIS DRAWING IS THE SOLE PROPERTY OF METAL DESIGN SYSTEMS INC.  
 ANY REPRODUCTION, IN PART OR WHOLE, WITHOUT THE WRITTEN PERMISSION OF METAL DESIGN SYSTEMS INC. IS PROHIBITED.



**METAL DESIGN SYSTEMS**  
 103 Chamber Drive  
 Anamosa, IA 52205  
 Ph. (319) 362-7454  
 MATERIAL: ...

PROJECT: EQUITONE CONCEALED FASTENER - CI - 12mm MATERIAL		
PROJECT NUMBER: ...	DRAWING NUMBER: CFC107	SCALE: 6" = 1'-0"
DRAWING DESCRIPTION: WINDOW JAMB TERMINATION DETAIL		
DRAWN BY: ...	DATE: 01/22/2024	

SUBSTRATE SUITABLE FOR STRUCTURAL AND CODE COMPLIANCE

THERMALLY BROKEN FURRING SYSTEM

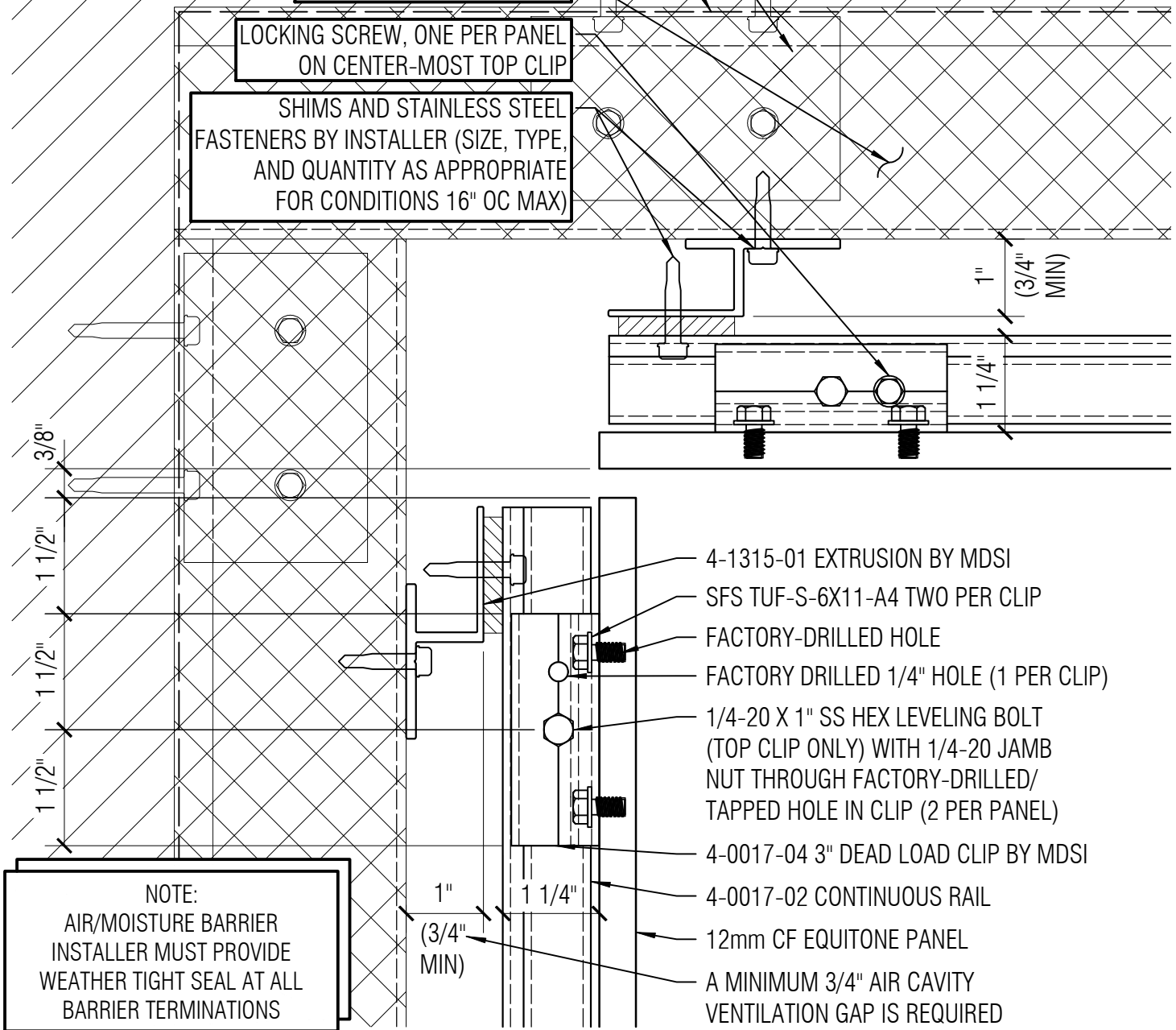
WATER-RESISTIVE BARRIER (WRB) OVER EXTERIOR SHEATHING BY OTHERS TREAT ALL FASTENER PENETRATIONS AS PER WRB MANUFACTURER'S RECOMMENDATIONS BY INSTALLER

MINERAL FIBER INSULATION

LOCKING SCREW, ONE PER PANEL ON CENTER-MOST TOP CLIP

SHIMS AND STAINLESS STEEL FASTENERS BY INSTALLER (SIZE, TYPE, AND QUANTITY AS APPROPRIATE FOR CONDITIONS 16" OC MAX)

NOTE: EQUITONE IS CONSIDERED NON-COMBUSTIBLE PER ASTM E136, BUT IF NFPA-285 COMPLIANCE IS REQUIRED ON A PROJECT DUE TO OTHER COMPONENTS PRESENT IN THE WALL ASSEMBLY, ADDITIONAL INFORMATION AND DIRECT TECHNICAL ASSISTANCE IS READILY AVAILABLE UPON REQUEST.



NOTE:  
AIR/MOISTURE BARRIER  
INSTALLER MUST PROVIDE  
WEATHER TIGHT SEAL AT ALL  
BARRIER TERMINATIONS

- 4-1315-01 EXTRUSION BY MDSI
- SFS TUF-S-6X11-A4 TWO PER CLIP
- FACTORY-DRILLED HOLE
- FACTORY DRILLED 1/4" HOLE (1 PER CLIP)
- 1/4-20 X 1" SS HEX LEVELING BOLT (TOP CLIP ONLY) WITH 1/4-20 JAMB NUT THROUGH FACTORY-DRILLED/TAPPED HOLE IN CLIP (2 PER PANEL)
- 4-0017-04 3" DEAD LOAD CLIP BY MDSI
- 4-0017-02 CONTINUOUS RAIL
- 12mm CF EQUITONE PANEL
- A MINIMUM 3/4" AIR CAVITY VENTILATION GAP IS REQUIRED

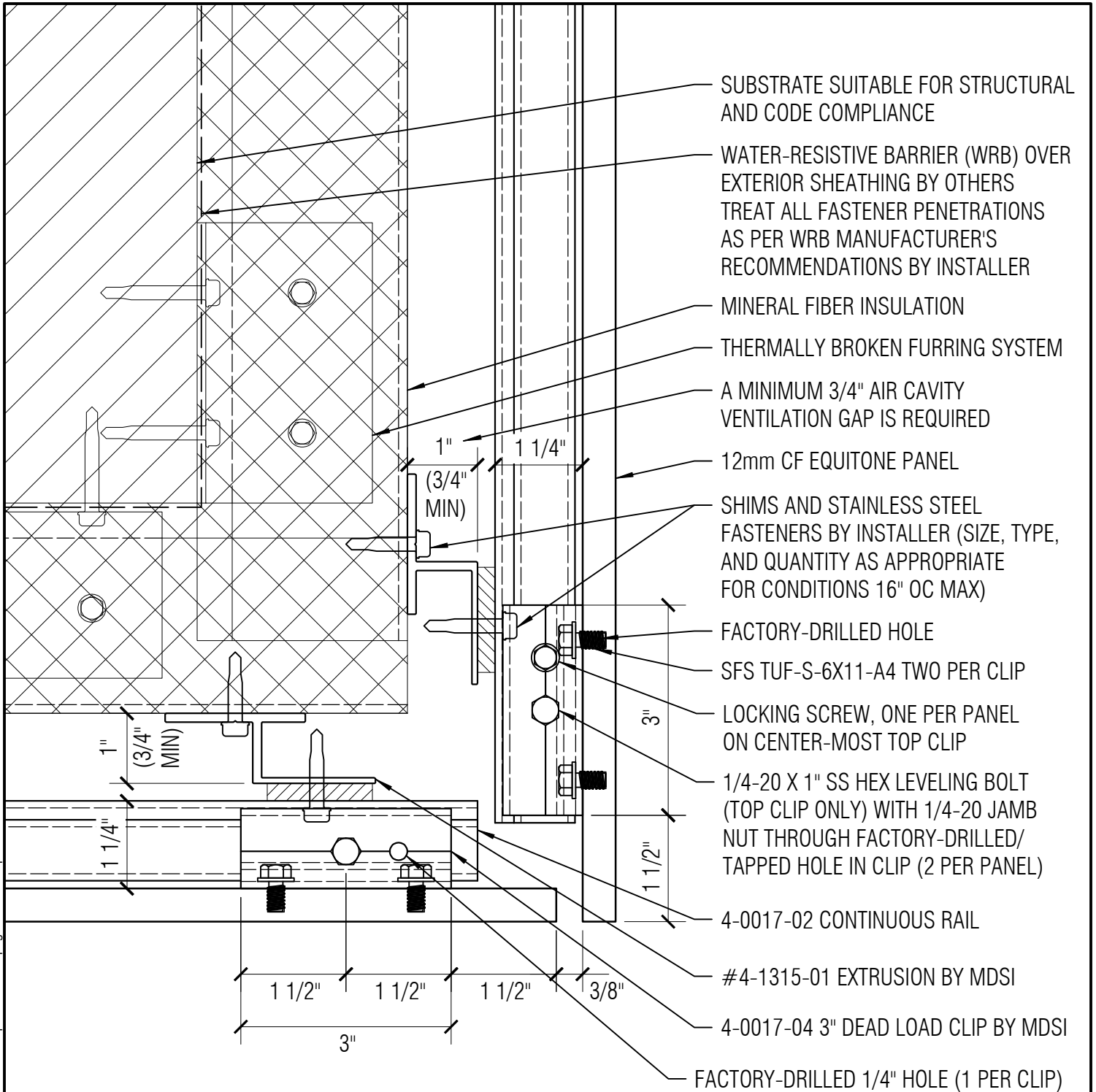
THE INFORMATION CONTAINED IN THIS DRAWING IS THE SOLE PROPERTY OF METAL DESIGN SYSTEMS INC.  
ANY REPRODUCTION, IN PART OR WHOLE, WITHOUT THE WRITTEN PERMISSION OF METAL DESIGN SYSTEMS INC. IS PROHIBITED.



**METAL DESIGN SYSTEMS**  
103 Chamber Drive  
Anamosa, IA 52205  
Ph. (319) 362-7454  
MATERIAL:  
...

PROJECT: EQUITONE CONCEALED FASTENER - CI - 12mm MATERIAL		
PROJECT NUMBER: ...	DRAWING NUMBER: CFC108	SCALE: 6" = 1'-0"
DRAWING DESCRIPTION: INSIDE CORNER DETAIL		
DRAWN BY: ...	DATE: 01/22/2024	

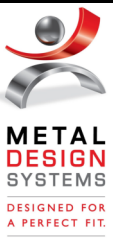
T:\Company\_Shared\_Folders\Tech\System\_Info\Equitone\System\_Details - Equitone.3dm page 50 of 54 printed 1/24/2024 6:06 last saved 1/24/2024 5:54



NOTE: EQUITONE IS CONSIDERED NON-COMBUSTIBLE PER ASTM E136, BUT IF NFPA-285 COMPLIANCE IS REQUIRED ON A PROJECT DUE TO OTHER COMPONENTS PRESENT IN THE WALL ASSEMBLY, ADDITIONAL INFORMATION AND DIRECT TECHNICAL ASSISTANCE IS READILY AVAILABLE UPON REQUEST.

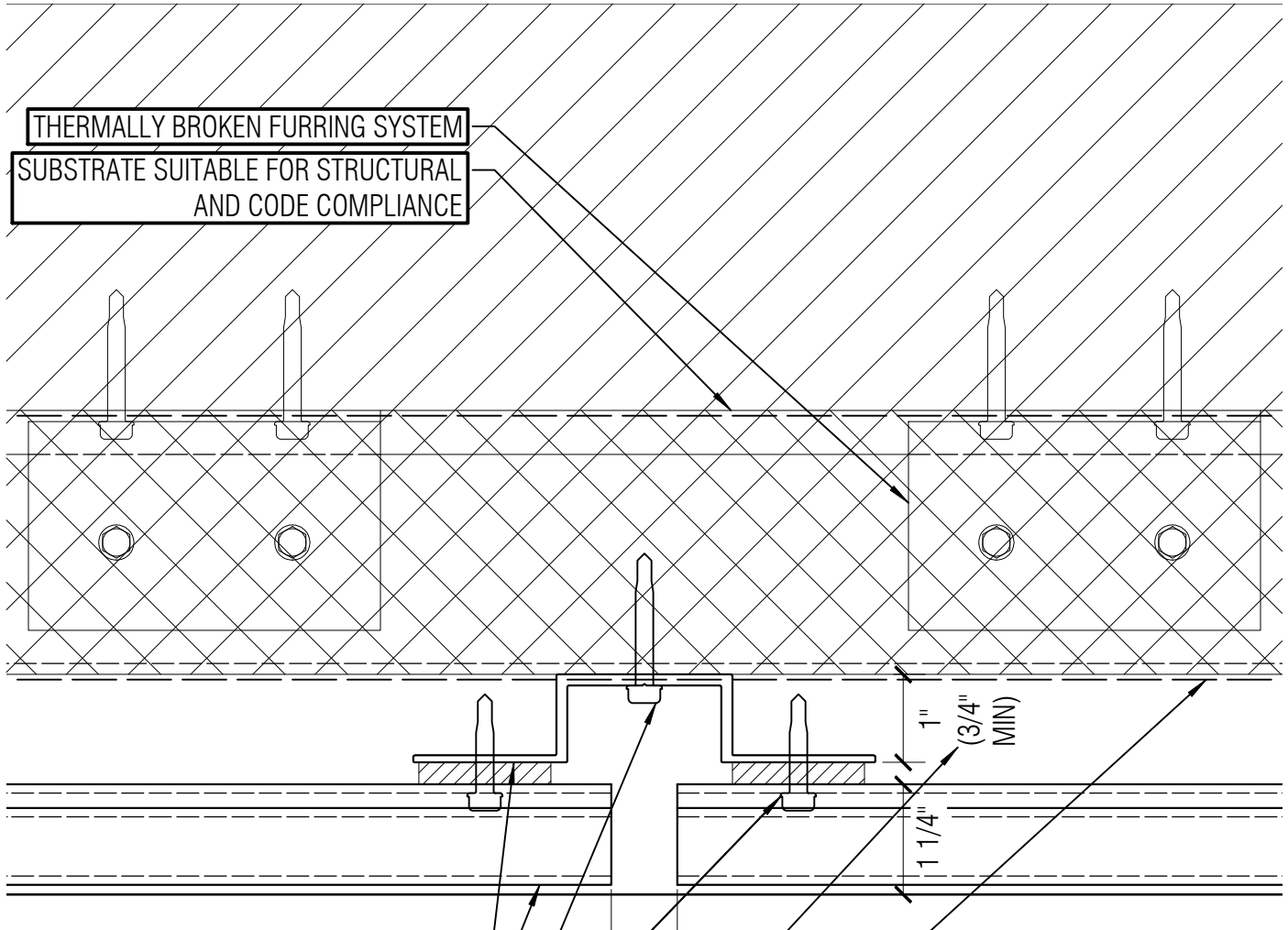
NOTE: AIR/MOISTURE BARRIER INSTALLER MUST PROVIDE WEATHER TIGHT SEAL AT ALL BARRIER TERMINATIONS

THE INFORMATION CONTAINED IN THIS DRAWING IS THE SOLE PROPERTY OF METAL DESIGN SYSTEMS INC. ANY REPRODUCTION, IN PART OR WHOLE, WITHOUT THE WRITTEN PERMISSION OF METAL DESIGN SYSTEMS INC. IS PROHIBITED.



**METAL DESIGN SYSTEMS**  
 103 Chamber Drive  
 Anamosa, IA 52205  
 Ph. (319) 362-7454  
 MATERIAL: ...

PROJECT: EQUITONE CONCEALED FASTENER - CI - 12mm MATERIAL		
PROJECT NUMBER: ...	DRAWING NUMBER: CFC109	SCALE: 6" = 1'-0"
DRAWING DESCRIPTION: OUTSIDE CORNER DETAIL		
DRAWN BY: ...		DATE: 01/22/2024



**THERMALLY BROKEN FURRING SYSTEM**  
**SUBSTRATE SUITABLE FOR STRUCTURAL AND CODE COMPLIANCE**

- 4-1314-01 EXTRUSION BY MDSI
- 4-0017-02 CONTINUOUS RAIL
- 12mm CF EQUITONE PANEL
- SHIMS AND STAINLESS STEEL FASTENERS BY INSTALLER (SIZE, TYPE, AND QUANTITY AS APPROPRIATE FOR CONDITIONS 16" OC MAX)
- A MINIMUM 3/4" AIR CAVITY VENTILATION GAP IS REQUIRED

WATER-RESISTIVE BARRIER (WRB) OVER EXTERIOR SHEATHING BY OTHERS  
 TREAT ALL FASTENER PENETRATIONS AS PER WRB MANUFACTURER'S RECOMMENDATIONS BY INSTALLER

**NOTE:**  
 AIR/MOISTURE BARRIER INSTALLER MUST PROVIDE WEATHER TIGHT SEAL AT ALL BARRIER TERMINATIONS

**NOTE:** EQUITONE IS CONSIDERED NON-COMBUSTIBLE PER ASTM E136, BUT IF NFPA-285 COMPLIANCE IS REQUIRED ON A PROJECT DUE TO OTHER COMPONENTS PRESENT IN THE WALL ASSEMBLY, ADDITIONAL INFORMATION AND DIRECT TECHNICAL ASSISTANCE IS READILY AVAILABLE UPON REQUEST.

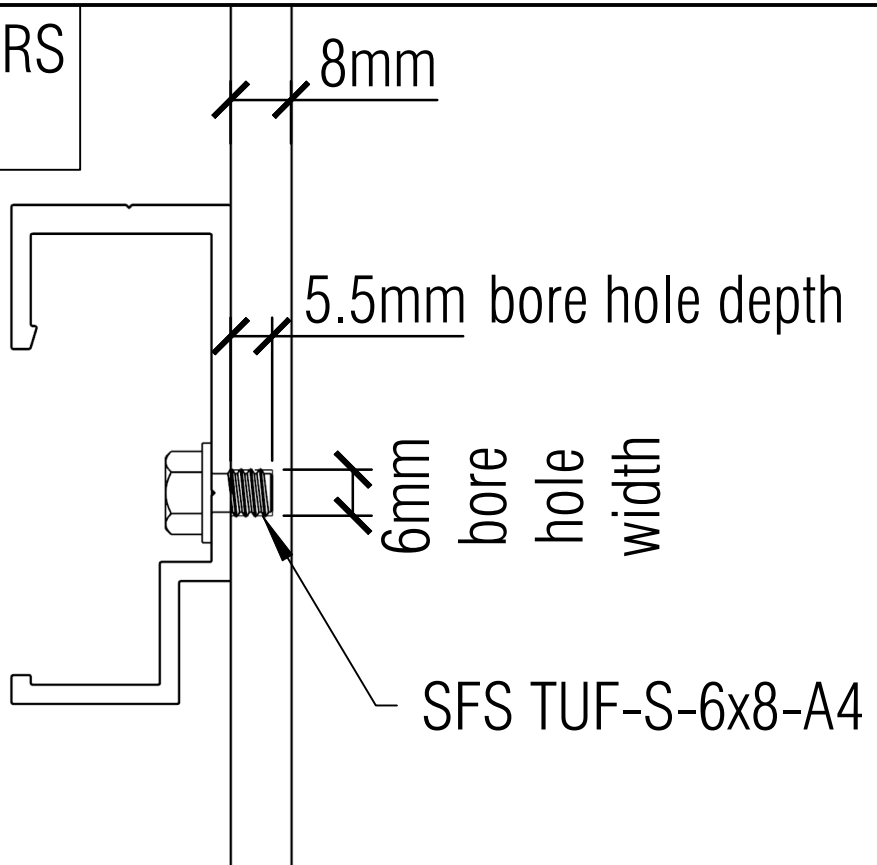
THE INFORMATION CONTAINED IN THIS DRAWING IS THE SOLE PROPERTY OF METAL DESIGN SYSTEMS INC.  
 ANY REPRODUCTION, IN PART OR WHOLE, WITHOUT THE WRITTEN PERMISSION OF METAL DESIGN SYSTEMS INC. IS PROHIBITED.



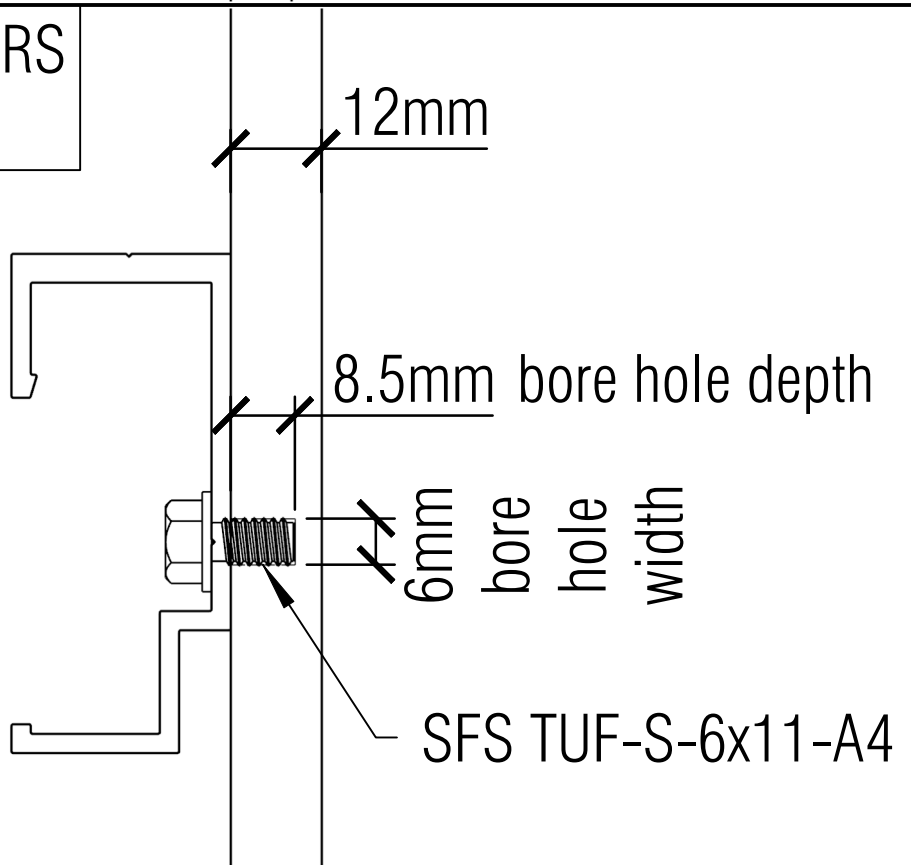
**METAL DESIGN SYSTEMS**  
 103 Chamber Drive  
 Anamosa, IA 52205  
 Ph. (319) 362-7454  
 MATERIAL:  
 ...

PROJECT: EQUITONE CONCEALED FASTENER - CI - 12mm MATERIAL		
PROJECT NUMBER: ...	DRAWING NUMBER: CFC10	SCALE: 6" = 1'-0"
DRAWING DESCRIPTION: 4-0017-00 RAIL SPLICE CONDITION		
DRAWN BY: ...	DATE: 01/22/2024	

# CONCEALED FASTENERS FOR 8mm PANELS



# CONCEALED FASTENERS FOR 12mm PANELS



T:\Company\_Shared\_Folders\Tech\System\_Info\Equitone\System\_Details - Equitone.3dm page 52 of 54 printed 1/24/2024 6:06 last saved 1/24/2024 5:54

THE INFORMATION CONTAINED IN THIS DRAWING IS THE SOLE PROPERTY OF METAL DESIGN SYSTEMS INC.

ANY REPRODUCTION, IN PART OR WHOLE, WITHOUT THE WRITTEN PERMISSION OF METAL DESIGN SYSTEMS INC. IS PROHIBITED.



**METAL DESIGN SYSTEMS**

103 CHAMBER DRIVE  
ANAMOSA, IA 52205  
Ph. (319) 362-7454

MATERIAL:  
...

PROJECT:

EQUITONE CONCEALED FASTENER - 12mm MATERIAL

PROJECT NUMBER:

...

DRAWING NUMBER:

CFCI 11

SCALE:

NTS

DRAWING DESCRIPTION:

CONCEALED FASTENER SPECIFICATIONS

DRAWN BY:

NPB

DATE:

01/22/2024